

VEVOR[®]

TOUGH TOOLS, HALF PRICE

Technical Support and E-Warranty Certificate www.vevor.com/support

CABLE RAILING POST

**MODEL:HR-001/HR-002/HR-003/HR-004/HR-005/HR-006/HR-007/
HR-008/HR-009/HR-010/HR-011/HR-012/HR-013/HR-014
HR-015/HR-016/HR-017/HR-018/HR-019/HR-020/HR-021/
HR-022/HR-023**

We continue to be committed to provide you tools with competitive price.

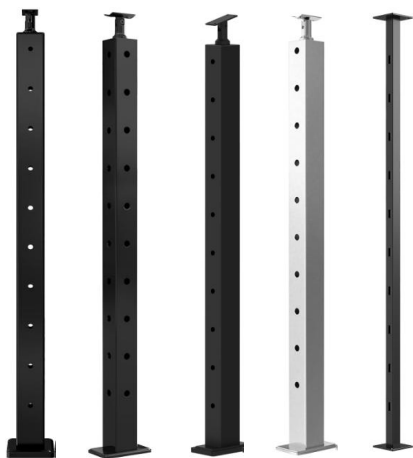
"Save Half", "Half Price" or any other similar expressions used by us only represents an estimate of savings you might benefit from buying certain tools with us compared to the major top brands and does not necessarily mean to cover all categories of tools offered by us. You are kindly reminded to verify carefully when you are placing an order with us if you are actually saving half in comparison with the top major brands.

VEVOR®

TOUGH TOOLS, HALF PRICE

CABLE RAILING POST

MODEL:HR-001/HR-002/HR-003/HR-004/HR-005/HR-006/HR-007/
HR-008/HR-009/HR-010/HR-011/HR-012/HR-013/HR-014
HR-015/HR-016/HR-017/HR-018/HR-019/HR-020/HR-021/
HR-022/HR-023



<Picture Only For Reference >

NEED HELP? CONTACT US!

Have product questions? Need technical support? Please feel free to contact us:

Technical Support and E-Warranty Certificate
www.vevor.com/support

This is the original instruction, please read all manual instructions carefully before operating. VEVOR reserves a clear interpretation of our user manual. The appearance of the product shall be subject to the product you received. Please forgive us that we won't inform you again if there are any technology or software updates on our product.

IMPORTANT SAFEGUARDS



WARNING: Read and understand this entire manual before operating or servicing this product. Failure to follow these warnings and instructions can cause personal injury or damage to valuable property.

- 1.The warning indicates that appropriate action should be taken to avoid the potential danger of personal injury.
- 2.Product capabilities apply to properly and completely assembled product only.
- 3.Please keep small spare parts out of children's reach,it is not a toy, Do not allow children to play.
4. For additional information regarding the parts listed in the following pages, please refer to the Assembly Diagram of this manual. Unwrap and separate all parts in a clean work area.

SAVE THESE INSTRUCTIONS

MAIN FEATRUES

This product is mainly used for column installation of wire functions and decorative accessories.

VEVOR's Cable Railing Post is made of all stainless steel materials, which has great resistance to rust and corrosion. It will work for long life time for interior and exterior railings with low maintenance. Please note that it is not recommended for coastal projects.

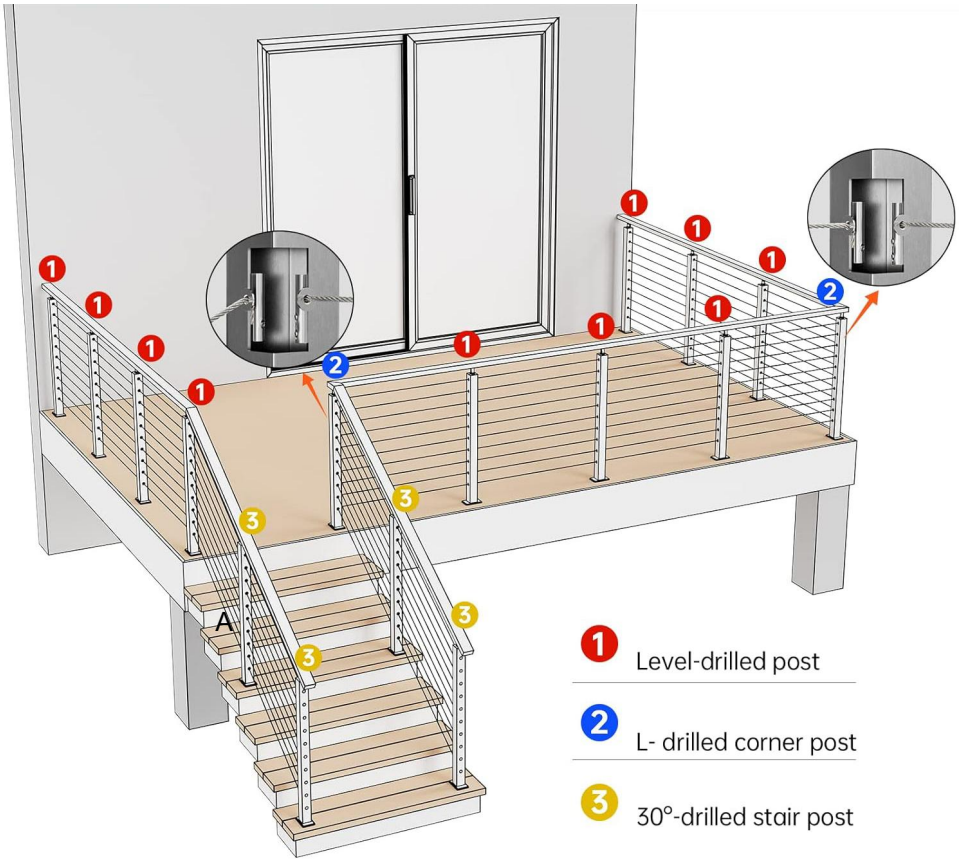
We work with every effort to provide quality products and professional service, and make VEVOR a reliable brand.

INSTALLATION INSTRUCTION

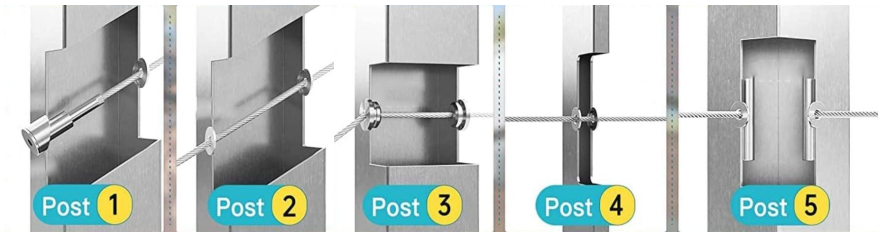
Installation indication and Applicable post

Applicable to all engineering installation scenarios.

Note: This product only includes the column and its installation fasteners, excluding wire rope, Cable Railing Kit, handrail.



- 1** Level-drilled post
- 2** L- drilled corner post
- 3** 30°-drilled stair post

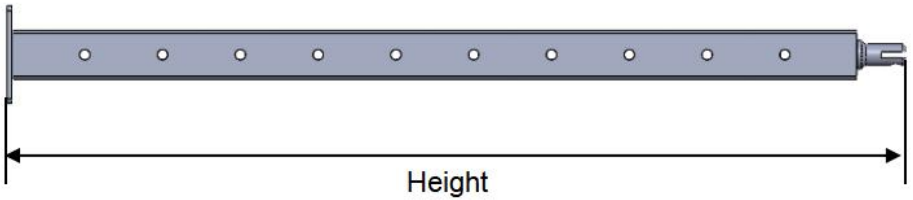


PRODUCT INFORMATION

Model	Drilled	Height (mm)	Drilled number	Hole diameter (mm)	Pitch of holes (mm)	Section size (mm)	Color	Include (pcs)
-------	---------	-------------	----------------	--------------------	---------------------	-------------------	-------	---------------

HR-001	level	1067	12	φ10.5	80	50*50	Black	4
HR-002	level	914	10	φ10.5	80	50*50	Black	4
HR-003	level	1067	12	φ8	80	30*50	Black	4
HR-004	level	914	10	φ8	80	30*50	Black	4
HR-005	30°	1067	12	10.5×15	80	50*50	Silver	1
HR-006	30°	1067	12	10.5×15	80	50*50	Black	1
HR-007	L	1067	12	φ10.5	80	50*50	Black	1
HR-008	Non	914	/	/	/	50*50	Black	1
HR-009	level	914	10	φ10.5	80	50*50	Black	1
HR-010	30°	914	10	10.5×15	80	50*50	Black	1
HR-011	L	914	10	φ10.5	80	50*50	Black	1
HR-012	level	914	10	φ10.5	80	50*50	Silver	1
HR-013	30°	1067	12	8×13	80	30*50	Black	1
HR-014	L	1067	12	φ8	80	30*50	Black	1
HR-015	30°	914	10	8×13	80	30*50	Black	1
HR-016	L	914	10	φ8	80	30*50	Black	1

HR-017	Non	914	/	/	/	38*38	Black	1
HR-018	level	1067	12	φ8	80	30*50	Black	1
HR-019	Non	1067	/	/	/	50*50	Black	1
HR-020	level	914	10	φ8	80	30*50	Black	1
HR-021	level	1067	12	φ10.5	80	50*50	Black	1
HR-022	level	914	10	Φ8	80	30*50	Silver	1
HR-023	level	1067	12	φ10.5	80	50*50	Silver	1





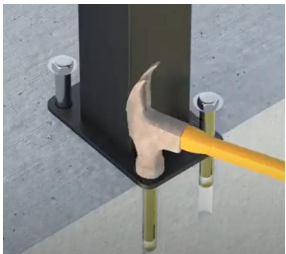
PACKAGE INCLUDE



No	Components	Picture	QTY				
			Fit model				
			HR-001/ HR-002	HR005~HR012/ HR-019/H R-021/HR-023/	HR-003/ HR-004	HR-013~ HR-016/ HR-018/ HR-020/ HR-022/	HR-017
1	post		4	1	4	1	/
			/	/	/	/	1
2	Square cover		4	1	/	/	/

3	Rectangular cover		/	/	4	1	/
4	anchor bolt		16	4	16	4	4
5	Curved bracket		4	1	4	1	/
6	Horizontal bracket		4	1	4	1	/
7	hex wrench		4	1	4	1	1
8	Open end wrench		4	1	4	1	1
9	Tapping screw		8	2	8	2	4
10	Plastic cover		/	/	/	/	1

INSTALLATION

For concrete or wood floor

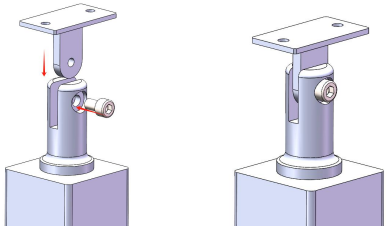
		
Step1.Mark the drilling points at the appropriate installation locations.	Step2.use a hammer drill to make a hole for \varnothing 12 at the marked points.	Step3.Hammer the anchor screw into the drilled hole.

	
<p>Step4.Tighten the screws</p>	<p>Step5.Close the lid and finish fixing the post.</p>

Note: Ensure that the column is upright when fixing the bottom plate of the post.

Mount with handrail(horizontal)

Step1: Fixed bracket



Step2: Determine the installation position of the handrail, and then mark the position under the handrail and bracket holes and drill holes with a $\varnothing 5.5$ - $\varnothing 5.6$ mm drill.



Step3: Use the self-tapping screws in the accessory to fix the handrail to

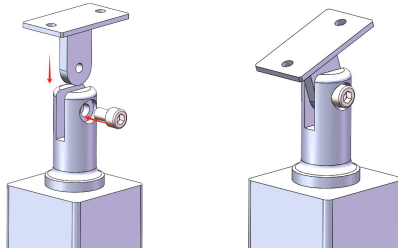
the support.



It is also suitable for the installation of arc handrails and brackets.

Mount with handrail(gradient)

Step1: Fixed bracket



Step2: Adjust the Angle of the bracket to fit the underside of the handrail. Determine the installation position of the handrail, and then mark

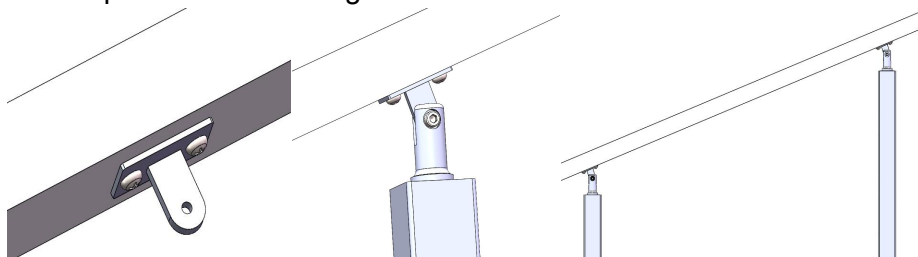
the position under the handrail and bracket holes and drill holes with a \varnothing

5.5- \varnothing 5.6mm drill.

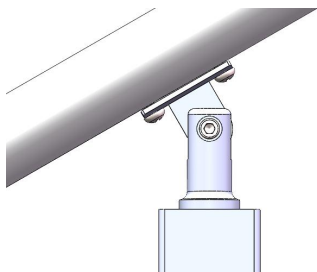
Note:The handrail and bracket can be pre-fixed with the help of clamping tools, so that multiple bracket installation points can be marked and positioned at the same time.



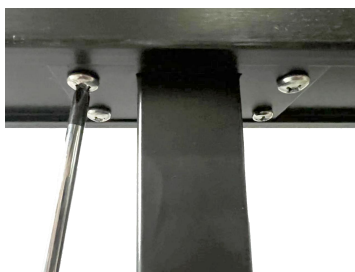
Step3:Remove the bracket from the post and then use the self-tapping screws in the accessory to fix the bracket to the handrail.
Fix the post and bracket again.



It is also suitable for the installation of arc handrails and brackets.

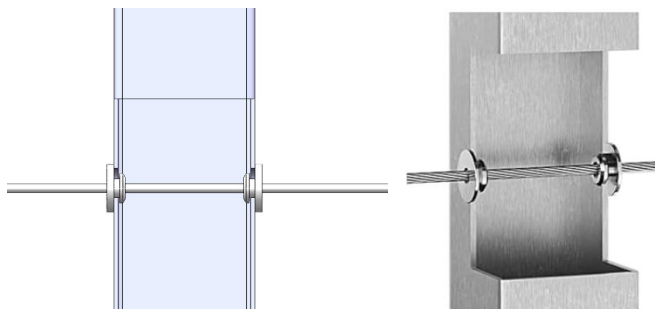


For model HR-017

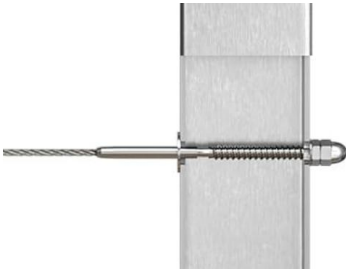


Install with wire rope and fittings

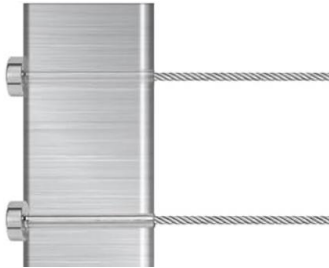
For Level Wheel Protector Sleeve



For Stud Tensioner Horizontal mounting and Angle



For Turnbuckle Tensioner and Fixed Terminal



Manufacturer: Shanghaimuxinmuyeyouxiangongsi

Address: Shuangchenglu 803nong11hao1602A-1609shi, baoshanqu, shanghai 200000 CN.

Imported to AUS: SIHAO PTY LTD. 1 ROKEVA STREETEASTWOOD NSW 2122 Australia

Imported to USA: Sanven Technology Ltd. Suite 250, 9166 Anaheim Place, Rancho Cucamonga, CA 91730

UK	REP
-----------	------------

YH CONSULTING LIMITED. C/O YH Consulting Limited Office 147, Centurion House, London Road, Staines-upon-Thames, Surrey, TW18 4AX

EC	REP
-----------	------------

E-CrossStu GmbH
Mainzer Landstr.69,
60329 Frankfurt am Main.

VEVOR[®]

TOUGH TOOLS, HALF PRICE

Technical Support and E-Warranty Certificate

www.vevor.com/support