

VEVOR[®]

TOUGH TOOLS, HALF PRICE

Technical Support and E-Warranty Certificate www.vevor.com/support

AIR PURIFIER

MODEL: XF180U / XF180 / XF180A / XF250U / XF250 / XF250A

We continue to be committed to provide you tools with competitive price.

"Save Half", "Half Price" or any other similar expressions used by us only represents an estimate of savings you might benefit from buying certain tools with us compared to the major top brands and does not necessarily mean to cover all categories of tools offered by us. You are kindly reminded to verify carefully when you are placing an order with us if you are actually saving half in comparison with the top major brands.

VEVOR[®]

TOUGH TOOLS, HALF PRICE

AIR PURIFIER

MODEL: XF180U / XF180 / XF180A / XF250U / XF250 / XF250A



NEED HELP? CONTACT US!

Have product questions? Need technical support? Please feel free to contact us:

Technical Support and E-Warranty Certificate
www.vevor.com/support

This is the original instruction, please read all manual instructions carefully before operating. VEVOR reserves a clear interpretation of our user manual. The appearance of the product shall be subject to the product you received. Please forgive us that we won't inform you again if there are any technology or software updates on our product.

USER INFORMATION

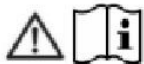
Respected Users:

Before operation, please read the following safety precautions in order to avoid fire or personal injuries.

- This product is prohibited to be used under high temperature environment (above 80 °C), inflammable, explosive or greasy environment.
- When not in use for a long time, the power should be disconnected and pressed, and the machine switch is closed.
- The distance between smoke hood and smoke producing point directly influences smoking effect. (VEVOR advise: the bamboo smoking tube used as a question mark? Smoking distance should be kept at 10-15cm)
- The longer the pipe, the weaker the smoking effect (VEVOR advise: Adjust the direction of the fan or air conditioner outlet around the smoke hood that produces airflow. You can also make a seal to block the effect of air flow on smoking.
- The longer the pipe, the less effective it is to smoke (VEVOR advise: The branch of the smoking pipe can up to 1.4M)
- The more frequently the pipe changed, the weak the smoking effect is. (VEVOR advise:Cut as few corners as you can)

IMPORTANT SAFEGUARDS

Please read and understand this entire manual before attempting to assemble,



operate or install the product. Failure to follow all instructions listed below may result in electric shock, fire and/or serious injury.

WARNING:

- To Reduce The Risk Of Fire Or Electric Shock.Do Not Use This Air purifier With Any Solid-State Speed Control Device.Include instructions pertaining to a risk of fire,electric shock, or injury to persons,for cleaning and user-maintenance, such as lubrication.
- DO NOT operate any air purifier with a damaged cord or plug.Discard air purifier or return to an authorized service facility for examination and/ or repair.

- DO NOT run cord under carpeting. Do not cover cord with throw rugs, runners, or similar coverings.
- DO NOT route cord under furniture or appliances. Arrange cord away from traffic area and where it will not be tripped over. Disconnect the appliance from the power supply before servicing.
- Regular Check: Have your air purifier checked regularly for any sign of malfunction! Stop using, Check if Plug, cord or appliance is damaged. Excessive noise, unpleasant odor or abnormal heat.
- This appliance can be used by children aged from 8 years and above and persons with reduced physical, sensory or mental capabilities or lack of experience and knowledge if they have been given supervision or instruction concerning use of the appliance in a safe way and understand the hazards involved. Children shall not play with the appliance. Cleaning and user maintenance shall not be made by children without supervision.
- Children should be supervised to ensure that they do not play with the appliance.
- Close supervision is necessary when any appliance is used by or near children. Children should be supervised to ensure that they do not play with the appliance. Cleaning and user maintenance shall not be done by children unless they are older than and supervised.
- Use the appliance only for intended household purposes as described in this User Manual. Any other use is not recommended that may cause fire electric shock, or injury to people.
- If the supply cord is damaged, it must be replaced by the manufacturer, its service agent or similarly qualified persons in order to avoid a hazard.

Other safety rules

1. Always disconnect the power supply prior to servicing the air purifier, motor or junction box.
2. Installation work must be out by a qualified person(s) in accordance to all local and safety codes including the rules for fire-rated construction.
3. Follow all local building, safety and electrical codes, as well as NEC (National Electrical Code) and OSHA(Occupational Safety and Health Act).
4. Electric service supply must be in accordance with the input parameters.

5. This unit must be properly grounded.
6. Do not bend or kink the power wires.
7. Do not use to exhaust hazardous or explosive vapors.
8. air purifier should always be vented to the exterior and in compliance with local codes.
9. Prior to servicing or cleaning this unit, shut off power supply at the panel and lock to prevent the power from being turned on.
10. Use this unit in the manner intended by the manufacturer. If you have any questions, please call customer service.

SAVE THESE INSTRUCTIONS

FCC INFORMATION

CAUTION: Changes or modifications not expressly approved by the party responsible for compliance could void the user's authority to operate the equipment!

This device complies with Part 15 of the FCC Rules. Operation is subject to the following two conditions:

- 1) This product may cause harmful interference.
- 2) This product must accept any interference received, including interference that may cause undesired operation.

WARNING: Changes or modifications to this product not expressly approved by the party responsible for compliance could void the user's authority to operate the product.

Note: This product has been tested and found to comply with the limits for a Class B digital device pursuant to Part 15 of the FCC Rules, These limits are designed to provide reasonable protection against harmful interference in a residential installation.

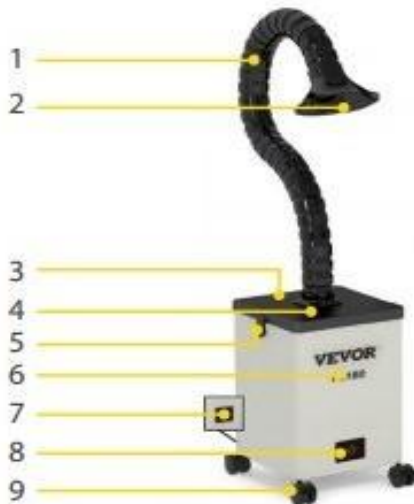
This product generates, uses and can radiate radio frequency energy, and if not installed and used in accordance with the instructions, may cause harmful interference to radio communications. However, there is no guarantee that interference will not occur in a particular installation. If this product does cause harmful interference to radio or television reception, which can be determined by

turning the product off and on, the user is encouraged to try to correct the interference by one or more of the following measures.

- Reorient or relocate the receiving antenna.
- Increase the distance between the product and receiver.
- Connect the product to an outlet on a circuit different from that to which the receiver is connected.
- Consult the dealer or an experienced radio/TV technician for assistance.

APPEARANCE STRUCTURE

VEVOR XF180/XF250 smoke purifier volume small, with four universal casters at the bottom, mobile flexible plug-in. Smoking tube can be universal adjusted, applicable to all types of worktables. The purified air conforms to the PONY EIA test certification, and the new filter is barrel-shaped, which also greatly increases the dust tolerance. The three-block variable speed adjustment can achieve a maximum flow of 180-250m³/h.



1. Bamboo Tube
2. Smoke Hood
3. Top Cover
4. Flange Which
5. Hasp
6. Host
7. Power Cord Interface
8. Switch
9. Castor Wheel

PACKING LIST

Please check the following parts carefully. If there is any missed or damaged items, please contact customer service department or dealers.

Main Machine	1
Power Line	1
Smoke Absorbing Pipe	1
Warranty Card	1
Operation Manual	1
Primary Filtering	5
H11 Hepa	1
Main-effect Filtering	1

OPERATION INSTRUCTIONS

- The power input of the machine shall be used within the specified rated voltage range(according to the power mark on the body) and it is forbidden to use when the voltage is too high or too low.Turn off the machine and unplug the device when you find that the voltage is not stable.
- When using the machine, the ambient temperature range of the gas and dust inhaled into the satiric mouth is:at room temperature of 50 °C,and it is forbidden to use above or below this temperature range.
- When using the machine, the humidity of the gas and dust inhaled by the air inlet is 40%-80 %. Excessive humidity will quickly invalidate the filter and damage the internal circuit of the machine, and it is forbidden to use when the humidity is higher than 80%.
- It is forbidden to use the machine without a filter core. The direct inhalation of soot or dust particles into the machine will cause damage to the fan and control system.The use of the machine in the above state caused by the time of maintenance at your own expense, will cause you greater losses.
- It is forbidden to continue to use the machine after the filter is severely blocked, which will greatly shorten the service life of the machine and even cause damage to the machine. The machine should be cleaned and maintained regularly, and the filter tube should be replaced regularly. To ensure that the machine works in good condition.
- When your machine filter is less clogged suction or when the filter core fails to

remove odor, use the filter tube strictly. Please replace the filter cartridge with the original configuration.

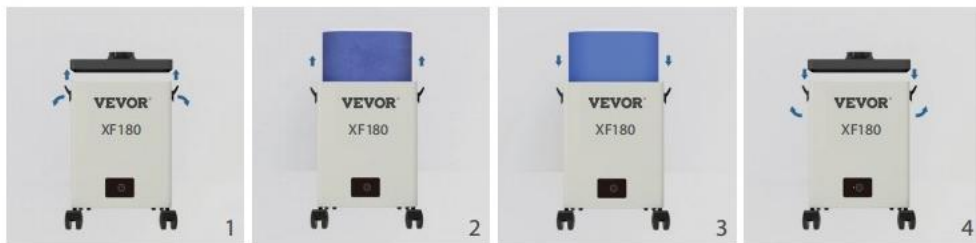
- It is forbidden to open the interior of the machine for maintenance. The warranty sticker on the fuselage is the only proof that you enjoy after-sales service. Please do not tear up or damage the warranty sticker on the fuselage.



Key point Operation

- Press the first turn on low
- Press the second mid-range
- Press the third upscale
- Press the fourth shutdown

REPLACEMENT AND MAINTENANCE OF FILTRATION SYSTEM



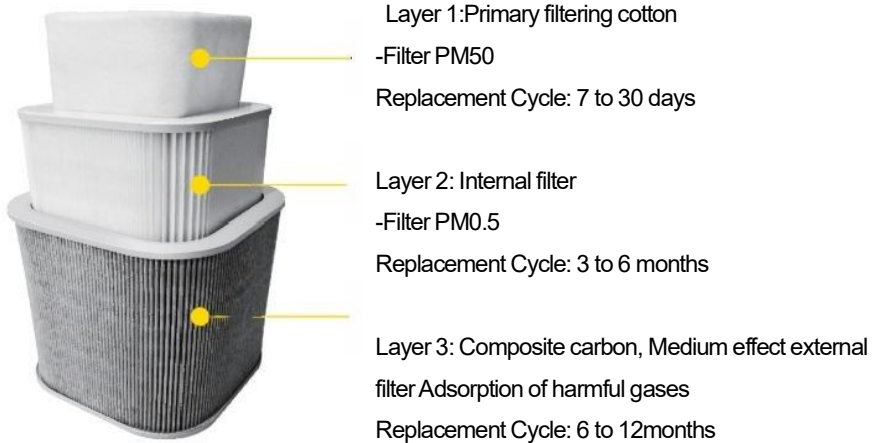
1. Open both sides of the buckle, remove the top cover.
2. Remove the saturated filter.
3. Put the new filter tube smoothly into the installation cover of the machine and buckle it tight.
4. The top cover must be smoothly loaded into the box.

* NOTES: Do not use brute force to press down the filter core, otherwise the box and buckle will be damaged.

Requirements:

- The filter core should be replaced regularly to ensure that the machine works in good condition. Before replacing and maintaining the filter system, please ensure that the power is cut off! We have no responsibility for machine damage caused by failure to comply with the regulations of the user's manual.

- The bamboo tube should be cleaned regularly so as not to cause the filter's blocking too quickly.
- When the adsorption capacity is reduced, check whether the filter should be replaced.
- When replacing the new filter, record the replacement date.
- When installing and removing the filter cylinder, you should hold the four-week border with your hands and slowly put it in and out. When handling, you are not allowed to use the inside of the head or top filter to avoid deformation or damage of the filter material and affect the filtration effect.
- The filter replacement alarm is triggered after 2500 hours of machine operation.



FAULT HANDLING



Please cut off the power before checking and repairing the equipment!

- Phenomenon: The system is still working, but the wind volume is weak and the inhalation force is greatly reduced.

Reason: The air inlet is blocked or the filter fails to reach saturation.

Check turn off the power, open the top cover, check whether there is something plugged into the air mouth. Check the air outlet for blockage. If there is no difference in inspection and treatment, reboot if the wind volume is small, the filter should be replaced.

- Phenomenon: Automatic shutdown immediately after the machine is started, re-open and repeat the above phenomenon.

Reason: The internal air flow is impassable, the filter core resistance is too large, causing the fan to start the current is too large, automatic protection shutdown.

Check: turn off the power, open the top cover, check whether there is a foreign body plugged into the air mouth; If there is no difference in inspection and treatment, set the file position to a minimum, and then reboot the file position to a suitable wind level.

SPECIFICATION PARAMETER

Model	XF180 series	XF250 series
Air Inlet	φ 65mm	φ 65mm
Voltage	110~120V(USA)	110~120V(USA)
	220~240V(EU, AUS)	220V~240(EU, AUS)
Maximum Power	100W	150W
No-load Speed	5800	5800
Air Velocity	17.4m/s	24m/s
Noise Level	<70dB	<70dB
Length Of Duct	1.2m	1.2m
System Traffic	240m ³ /h	332m ³ /h
Dimensions Of Main Unit	265x265x335mm	265x265x430mm
Weight	8.5KG	10.1KG
Deploy	Pre-filter+H11+Main Filter	Pre-filter+H11+Main Filter
Layer Number	3	3

*Content is subject to update without notice.

SPECIFICATION PARAMETER



This product is subject to the provision of European Directive 2012/19/EC. The symbol showing a wheeled bin crossed through indicates that the product requires separate refuse collection in the European Union. This applies to the product and all accessories marked with this symbol. Products marked as such may not be discarded with normal domestic waste, but must be taken to a collection point for recycling electrical and electronic devices

USE REFERENCE

Case 1



Case 2



ACCESSORIES INSTALLATION

Installation of Smoking Cover



Installation of Smoking Pipe



VEVOR[®]

TOUGH TOOLS, HALF PRICE

Technical Support and E-Warranty Certificate

www.vevor.com/support