

VEVOR[®]

TOUGH TOOLS, HALF PRICE

Technical Support and E-Warranty Certificate

www.vevor.com/support

PASTE LIQUID FILLING MACHINE

USER MANUAL

We continue to be committed to provide you tools with competitive price.

"Save Half", "Half Price" or any other similar expressions used by us only represents an estimate of savings you might benefit from buying certain tools with us compared to the major top brands and does not necessarily mean to cover all categories of tools offered by us. You are kindly reminded to verify carefully when you are placing an order with us if you are actually saving half in comparison with the top major brands.

VEVOR[®]

TOUGH TOOLS, HALF PRICE

Paste Liquid Filling Machine



SYD-580-V1

SYD-580-V2

SYD-580-V3



SY-650-V1

SY-650-V2

SY-650-V3



SYD-650-V1

SYD-650-V2

SYD-650-V3

NEED HELP? CONTACT US!

Have product questions? Need technical support? Please feel free to contact us:

Technical Support and E-Warranty Certificate
www.vevor.com/support

This is the original instruction, please read all manual instructions carefully before operating. VEVOR reserves a clear interpretation of our user manual. The appearance of the product shall be subject to the product you received. Please forgive us that we won't inform you again if there are any technology or software updates on our product.

WARNING

1. Read carefully and understand all **ASSEMBLY AND OPERATION INSTRUCTIONS** before operating.
2. Failure to follow the safety rules and other basic safety precautions may result in serious personal injury.

GENERAL SAFETY RULES

Important reminder

1. Before use, please carefully read the product manual and ensure that you understand and comply with all safety warnings and usage precautions.
2. Do not use this product for other non-designated purposes to avoid unexpected risks.
3. This product is only applicable to users within the specified age group and scope of application. Please strictly comply with relevant age restrictions and warnings.
4. If there are any abnormalities in the product, please stop using it immediately and contact the after-sales service center for consultation or to arrange for repair.

Environmental requirements for use

1. Please use in a dry and well-ventilated environment to avoid extreme environmental conditions such as water activation, high temperature, high humidity, and extremely low temperature.
2. Avoid direct sunlight or contact with fire sources to prevent product damage or fire.
3. Please ensure a stable usage environment and prevent the product from being hit or dropped to avoid damage.

Safety Operation Guidelines

1. Please use a suitable power supply and voltage, and do not use damaged power cords or plugs.
2. When using this product, do not short-circuit circuits or connect mismatched devices to avoid risks such as electric shock and fire.

3. When foreign objects are found on the surface of the product, please immediately stop using and remove the foreign objects before continuing to use.
4. When using this product continuously for a long time, please rest in good time to avoid excessive fatigue.
5. Do not apply external force to the battery to avoid safety hazards such as battery rupture and leakage.

Maintenance and upkeep

1. Regularly maintain and clean the product. Before cleaning, please disconnect the power supply and wipe it with a dry cloth. Be careful not to use alcohol, acid or alkali solutions, etc Corrosive substances.
2. When the product is not in use for a long time, please disconnect the power supply promptly to save energy and extend the product's lifespan.
3. Do not disassemble the product or replace components on your own. If you encounter any malfunctions, please contact the after-sales service center.

Emergency handling measures

1. When there are abnormal situations or accidents with the product, please stop using it as soon as possible. If overheating, smoking, or abnormal sound are found, please immediately cut off the power supply and contact the after-sales service center.
2. If the product involves an emergency situation that may harm personal safety, please call the emergency rescue number in a timely manner.

Disclaimers

We attach great importance to the safety and quality of our products, but cannot assume responsibility for safety accidents caused by improper use or operation.

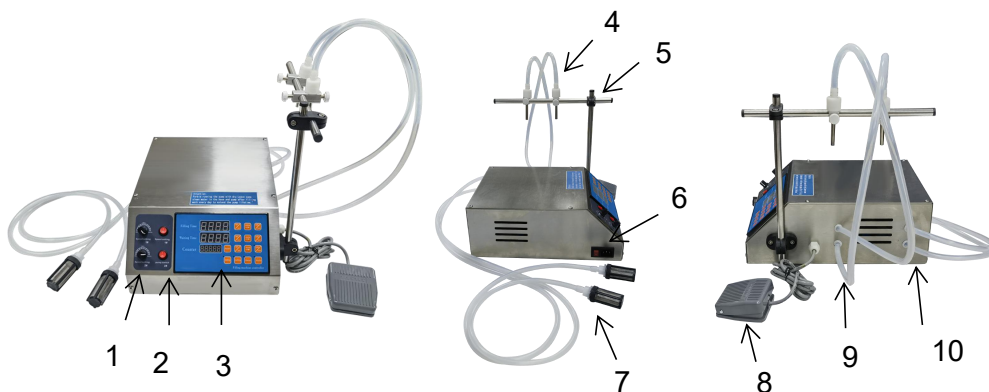
SAVE THESE INSTRUCTIONS

MODEL AND PARAMETERS

Model	SYD-5 80-V1	SYD-5 80-V2	SYD-5 80-V3	SY-65 0-V1	SY-65 0-V2	SY-65 0-V3	SYD-6 50-V1	SYD-6 50-V2	SYD-6 50-V3
Suitable liquid	All free-flowing pastes and liquids (no particles) such as Soy sauce, beverages, white wine, vinegar, milk, alcohol (less than 40%) etc			All free-flowing pastes and liquids (no particles) such as Soy sauce, beverages, white wine, vinegar, milk, alcohol (less than 75%) etc			All free-flowing pastes and liquids (no particles) such as Soy sauce, beverages, white wine, vinegar, milk, alcohol (less than 75%) etc		
Filling Range	10-3700ml			5ml-650ml			5ml-650ml		
Max Flow Rate	3.7 L/min			650ml/min			650ml/min		
Control Mode	Pedal Switch and Automatic			Pedal Switch and Automatic			Pedal Switch and Automatic		
Rating(s)	AC 120V 60Hz	AC230V 50Hz		AC 120V 60Hz	AC230V 50Hz		AC 120V 60Hz	AC230V 50Hz	
Power (Max.)	127W	127W	127W	46W	46W	46W	118W	118W	118W

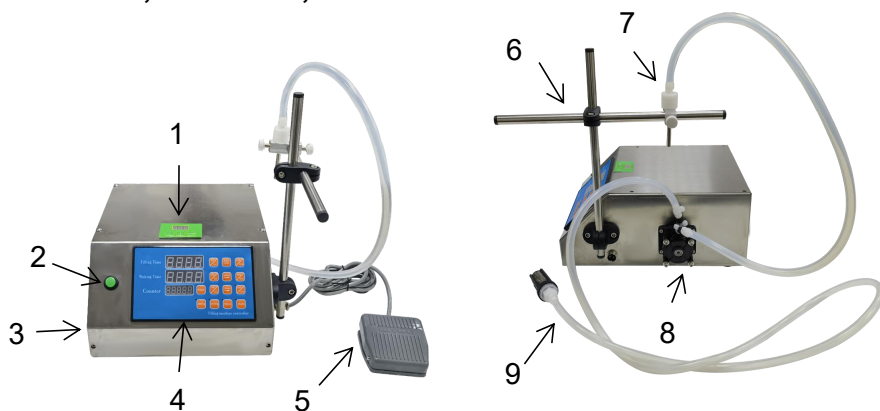
STRUCTURE DIAGRAM

SYD-580-V1, SYD-580-V2, SYD-580-V3



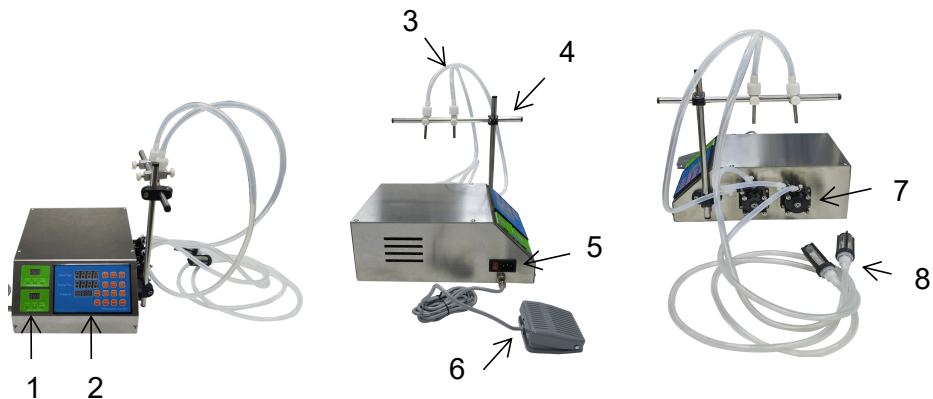
- 1.Speed Knob 2. Switch 3. Control Panel 4. Outlet Hose and Filling Nozzle(Double) 5.Built-up Bracket 6. Power Switch and AC Power Socket
7.Inlet Hose and Filter(Double) 8. Pedal Switch 9. Outlet(Double)
10. Inlet(Double)

SY-650-V1, SY-650-V2, SY-650-V3



1. Speed Setting 2. Start Button 3. Power Switch and AC Power Socket
4.Control Panel 5.Pedal Switch 6. Built-up Bracket 7. Outlet Hose and Filling Nozzle 8. Peristaltic Pump 9. Inlet Hose and Filter

SYD-650-V1,SYD-650-V2,SYD-650-V3



1. Speed Setting 2. Control Panel 3. Outlet Hose and Filling Nozzle(Double)
4. Built-up Bracket 5. Power Switch and AC Power Socket
6. Pedal Switch 7. Peristaltic Pump 8. Inlet Hose and Filter

COMPONENTS

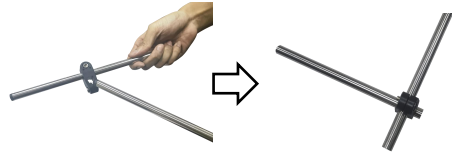
Model Parts	SYD-580-V1 SYD-580-V2 SYD-580-V3	SY-650-V1 SY-650-V2 SY-650-V3	SYD-650-V1 SYD-650-V2 SYD-650-V3
Power Cord	×1	×1	×1
Cross Connector	×1	×1	×1
Hex Wrench	×2	×2	×2
Rod	×2	×2	×2
Rubber Head Screw(M6)	×4	×2	×4
Filling Nozzle	×6	×2	×6
Fixed Block	×2	×1	×2
User Manual	×1	×1	×1
Pedal Switch	×1	×1	×1

OPERATING INSTRUCTIONS

1. Insert the rod into the cross connector.



2. Insert the other rod into the cross connector to lock.

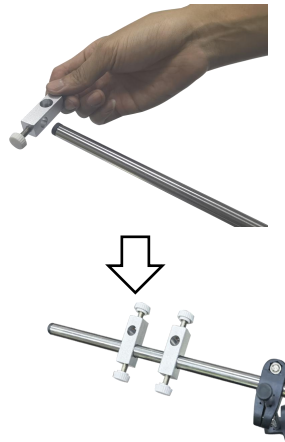


3. Install the above-installed rods on the T clamp as shown.



4. Install fixed blocks on rod and lock with rubber head screws.

Note: There is only one model SY-650 and two model SYD-650, SYD-580.



5. Insert the filling nozzles into the fixed blocks.

Note:SYD-580,SYD-650 are double filling nozzles .SY-650 is single filling nozzle.



6. Connect the pedal switch as shown.



7.Insert the power cord as shown.

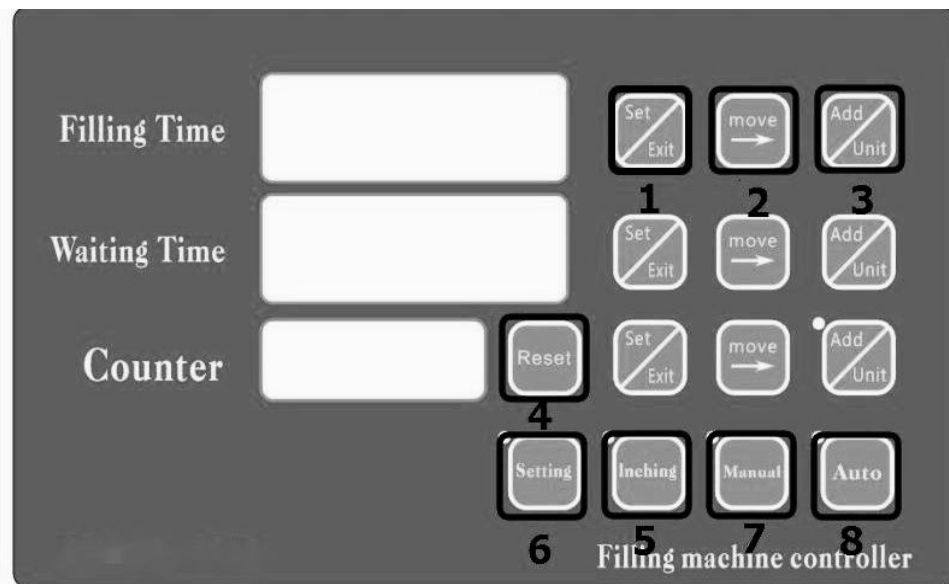


8.Product assembly completed.

Note:The built-up Bracket and the filling nozzles can be adjusted as needed.

9.Clean:After use,as needed it can be cleaned by repeated suction with a mild cleaning solution.Then it can be cleaned by repeatedly pumping water.

The operating instructions



*Button function introduction:

1, Set/exit button: Press it one time to set the filling/waiting time in the standby state. And can exit the setting mode if you press it one time again.

2, Move button: Move the cursor from left to right or to opposite direction

3, Add/unit button: Can adjust the setting number from 0-9 circularly

4, Reset button: Can restart the filling count from 0

5, Inching button: Can pull out the air inside the silicone tube and pump by pressing it in the standby state before filling. You also can press it to pull all the liquid out of the silicone tube and clean the machine conveniently.

6, Setting button: You can set your needed filling volume roughly by pressing it 2 times.

Manual button: You can make the machine fill with foot pedal or pressing it. One time, one filling.

Auto button: The machine will fill automatically based on the setting time

Add/mode: It shows the working mode Increase/decrease button: You can adjust the filling speed from 0-99. The speed is faster if the number is bigger.

Operation example

Firstly, Please let the machine stop filling .or please ensure that the machine is in standby/stop state by press" auto " key.((The machine will enter the standby station ,if you press "auto" key one time when it works with the automatic mode.The "auto" indicator will be off); Secondly,adjust the filling time and waiting/interval time,filling speed.

1, Usually, The count doesn't need to be adjusted. But you could return it to "0",when the machine is in standby state by pressing "reset" key.

2, As for the time meaning: we usually set "01.00" when you start the machine. It shows the relative filling time and waiting time. It means 1 second. 00.10 means 0.1 second. 10. 00 means 10 seconds

But if you move the point by pressing the "add/unit", its meaning will change. Such as : 010.0 it means 10 seconds ,001.0 it means 1 second, 1000.0 it means 1000 seconds

They are the same meaning for the filling and waiting time

Now ,we will set you an example to prove it . such as ,we want to fill the water with a weight of 50g.(We take the 5L model as an example)

We know the machine's max filling speed is about 5000ml per min in the max state. It will be smaller if we install the filling nozzle and filters. So we could conclude that the max filling weight is about 70ml per second for reference. So we could adjust the filling speed to the max and adjust the filling time to "01.00" by pressing" set/exit" key to choose the relative time,then move the "move" key to choose the relative number, then press "add/unit" key to change the number from "0-9" circularly (The adjustment is workable only for the blinking number). We press the "set/exit"key again, then the blinking number will stop and be stored in program after pressing "reset/exit" button again.

The waiting time is only workable in the state of automatic. And the time between 2 fillings is shorter,if you want to fill efficiently.

4, we could choose automatic mode or manual mode(by pressing relative key to choose) after setting the time.

Automatic mode means the machine will work according to the setting filling and distance time circularly ,unless you press the "auto". You could


press action mode to start filling if you choose the required mode.

Manual mode means the machine will work only when you press the “manual” button or press” foot pedal”.it will fill one time when you press one time. The machine will not work if you don't press it.

MAINTENANCE

- 1.It is better to clean the machine with clean water after every use, which can prolong the service life of the pump.
- 2.Please clean the product and the filter in time after each use.
- 3.When the machine is not in use, please empty the liquid and store it in a ventilated and dry place.
- 4.Please store the product in a dry and ventilated place.
- 5.Please replace the following consumable parts regularly:
Hose,Filter,Filling Nozzle

TROUBLESHOOTING

Problem	Possible Cause	Possible Solution
Not absorbing water	Machine first use or long time no use, very few will not absorb water, because the pump internal dry result.	You need to add some water from the intake pipe to the pump and then start the machine.
The pump can't get the liquid out	Hose inlet and outlet are inverted	Confirm hose inlet into liquid tank.
	The power cord is not plugged in	Reconnect the power cord
	Hose folded or damaged	Smooth hose or replace hose
The power indicator is off	The power cord is not plugged in	Reconnect the power cord
	<p>This product is subject to the provision of European Directive 2012/19/EC. The symbol showing a wheeled bin crossed through indicates that the product requires separate refuse collection in the European Union. This applies to the product and all accessories marked with this symbol. Products marked as such may not be discarded with normal domestic waste, but must be taken to a collection point for recycling electrical and electronic devices.</p>	

Manufacturer: Shanghaimuxinmuyeyouxiangongsi

Address: Shuangchenglu 803nong11hao1602A-1609shi, baoshanqu, shanghai 200000 CN.

Imported to AUS: SIHAO PTY LTD. 1 ROKEVA STREET EASTWOOD NSW 2122 Australia

Imported to USA: Sanven Technology Ltd. Suite 250, 9166 Anaheim Place, Rancho Cucamonga, CA 91730



E-CrossStu GmbH

Mainzer Landstr.69, 60329 Frankfurt am Main.



YH CONSULTING LIMITED.

C/O YH Consulting Limited Office 147, Centurion House, London Road, Staines-upon-Thames, Surrey, TW18 4AX

VEVOR[®]

TOUGH TOOLS, HALF PRICE

Technical Support and E-Warranty Certificate

www.vevor.com/support