

VEVOR[®]

TOUGH TOOLS, HALF PRICE

Technical Support and E-Warranty Certificate

www.vevor.com/support

DIRT BIKE STAND

MODEL: TD-003-05FR(RE)

We continue to be committed to provide you tools with competitive price. "Save Half", "Half Price" or any other similar expressions used by us only represents an estimate of savings you might benefit from buying certain tools with us compared to the major top brands and does not necessarily mean to cover all categories of tools offered by us. You are kindly reminded to verify carefully when you are placing an order with us if you are actually Saving Half in comparison with the top major brands.

VEVOR[®]

Dirt Bike Stand

Model: TD-003-05FR(RE)



NEED HELP? CONTACT US!

Have product questions? Need technical support? Please feel free to contact us:

Technical Support and E-Warranty Certificate
www.vevor.com/support

This is the original instruction, please read all manual instructions carefully before operating. VEVOR reserves a clear interpretation of our user manual. The appearance of the product shall be subject to the product you received. Please forgive us that we won't inform you again if there are any technology or software updates on our product.

SAFETY PRECAUTIONS



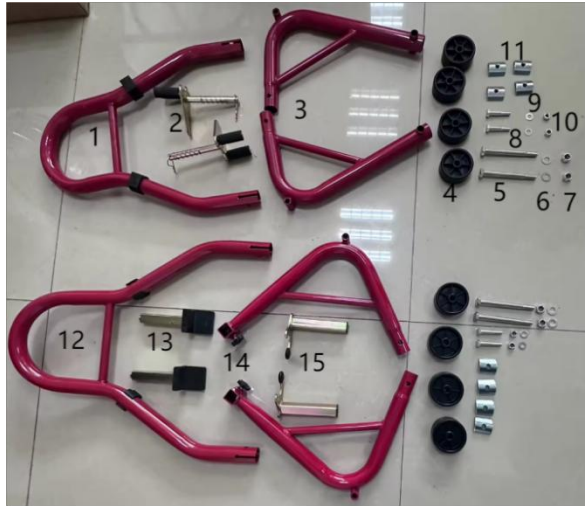
Warning - To reduce the risk of injury, user must read instructions manual carefully.

- Read and understand this entire manual before assembling, installing, operating, or servicing this product. Failure to follow these warnings and instructions can cause death, personal injury or damage to valuable property.
- Adhere to all Department of Transportation (D.O.T.) requirements when using this product.
- Use common sense when working. Stay alert and concentrate when setting up and using this product. Never work while under the influence of alcohol, drugs or medications.
- While assembling and using this product keep work area clean and well lighted. Keep spectators and children out of the work area.
- Dress appropriately. Never wear loose fitting clothing or jewelry when working. Contain long hair, and keep hair, clothing and gloves away from moving parts.
- Always keep this stand away from children.
- Check the stand is in good condition before using it.

SPECIFICATIONS

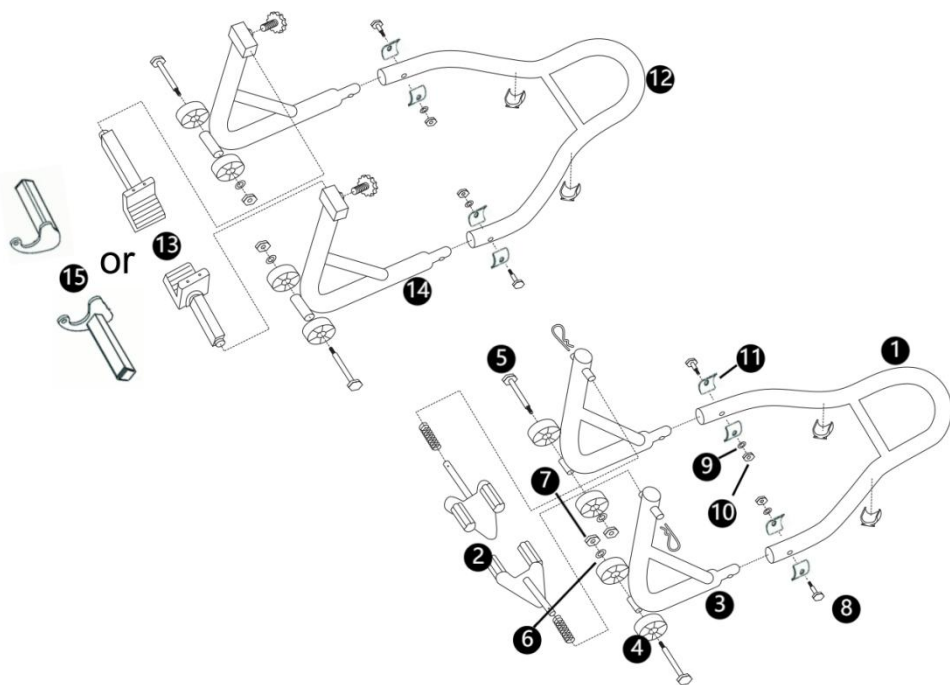
Model Series	TD-003-05FR(RE)
Maximum Load Capacity (lbs)	850
Support height (inch)	13.8

PRODUCT PARAMETERS



SN	Description	Qty
1	Front - wheel main tube	1
2	Front - wheel double - fork	2
3	Front - wheel support tube	2
4	Wheel	8
5	Screw M10×110mm	4
6	Washer d10mm	4
7	M10 nut	4
8	Screw M8×45mm	4
9	Washer d8mm	4
10	M8 nut	4
11	Fixing plate	8
12	Rear - wheel main tube	1
13	L - shaped fork	2
14	Rear - wheel support tube	2
15	U - shaped fork	2

INSTALLATION INSTRUCTIONS



Prepare all the accessories and tools needed according to the parts list.

For the front wheel bracket:

- Step 1: Insert Part 1 into 3, and then use Screws 8, 11, 9, and 10 to lock it tightly with tools.
- Step 2: Install Parts 4, 5, 6, and 7 onto 3 in sequence, and lock them tightly with tools.
- Step 3: Insert Part 2 into 3, and then use the R-shaped part to fix it into 2.

The installation of the rear wheel bracket is the same as that of the front wheel bracket. The difference is that you need to choose the appropriate plugs to use

PRODUCT DESCRIPTION

Assembling Instructions

- A. Assemble the wheels on both sides of the frame and then insert both frame pieces.
- B. Place M8 screws through the holes of clamping pieces and the frame, and make sure that the connecting part is covered with clamping pieces on both sides. Then add washers and use tools to tighten with the lock - nuts.
- C. Loosen the screws on both sides on the top of the frame with wheels, insert the correct adaptors (paddle adaptors or fork adaptors) which can fit your motorcycle.

Operation Of the Stand With Paddle Adaptors

- A. Loosen the screws on the top so that the position of adaptors can be adjusted.
- B. Roll the stand and make sure your motorcycle rear wheel is in the middle of the frame.
- C. Adjust the position of the paddle adaptors to match the width of your motorcycle dual swing arm and then tighten the screw with plastic.
- D. Raise the stand with the handle and move the stand to where it is under the swing arm, then press down the stand in order to raise your motorcycle rear wheel. Make sure the paddle adaptors are snug up against the swing arm.

Operation of the Stand with Fork Adaptors

- E. Loosen the screws on the top so that the position of adaptors can be adjusted.
 - F. Roll the stand and make sure your motorcycle rear wheel is in the middle of the frame.
 - G. Adjust the position of the fork adaptors to match the width of your motorcycle bobbins on both sides and then tighten the screw with plastic.
- Raise the stand with the round handle and move the stand to where fork adaptors are right under the bobbins, then press down the stand in order to raise your motorcycle rear wheel. Make sure the fork adaptors are snug up against the bobbins.

VEVOR[®]

TOUGH TOOLS, HALF PRICE

Technical Support and E-Warranty Certificate

www.vevor.com/support