

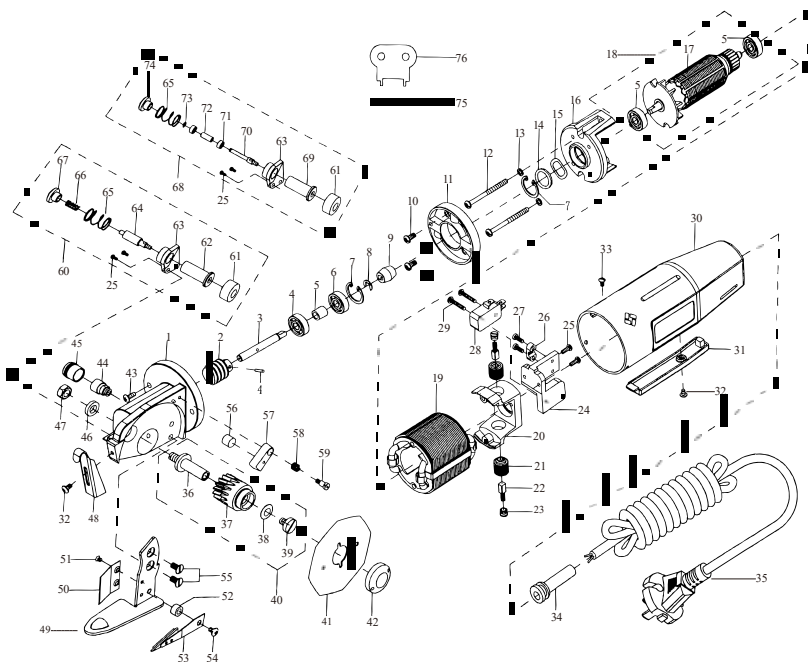
RS- 70

ROUND CUTTING MACHINE



RS- 70

Three Dimensional Assembly Picture



Ref.no. Part.no & Description

- 1 B30 Gear Housing
- 2 B31 Drive Gear
- 3 B33 Drive Gear Shaft
- 4 W33 Φ 2X12 Roll Pin
- 5 W5 626 Bearing
- 6 B35 Collar
- 7 W42 Φ 19 Collar
- 8 W38 Φ 6E Shaft Ring
- 9 B41 Coupling
- 10 W25 M4X8 Standard Screw
- 11 B40 Insulator
- 12 B45 M4X48 Standard Screw
- 13 W46 Φ 4 Washer
- 14 W43 Washer
- 15 W44 Φ 19X0.3 Undulated Washer
- 16 B47 Holder For Motor Cooler
- 17 B50 Rotor
- 18 B73 Rotor Assembly
- 19 B48 Stator
- 20 B54 Base For Carbon Brush
- 21 B63 Socket For Carbon Brush
- 22 W54 Carbon Brush
- 23 W55 Cap For Carbon Brush
- 24 B64 Base For Switch
- 25 W19 M3X8 Standard Screw
- 26 B68 Cord Press Block
- 27 G10 M3X10 Standard Screw
- 28 W57 Switch
- 29 G57 M3X18 Standard Screw
- 30 B58 Arm
- 31 B59 Switch Button
- 32 W67 M3X4 Standard Screw
- 33 W11 M3X6 Standard Screw
- 34 G65 Rubber Cover
- 35 G66 Cord
- 36 B18 Worm Wheel Shaft
- 37 B19 Worm Wheel
- 38 B74 Brass Washer

Ref.no. Part.no & Description

- 39 B20 Screw
- 40 B79 Worm Wheel Assembly
- 41 B21 Blade
- 42 B22 Blade Nut
- 43 G50 M4X10 Standard Screw
- 44 B10 Oil Cup
- 45 B9 Oil Cup Cover
- 46 B17 Φ 6 Washer
- 47 B16M6X5.2 Nut
- 48 B2 Safe Guard
- 49 B25 Press Foot
- 50 B27 Guide Plate
- 51 B26 M2.5X3 Standard Screw
- 52 G40 Collar
- 53 B24 Lower Knife
- 54 G42 M4X8 Standard Screw
- 55 G39 M4X8 Standard Screw
- 56 W28 Oil Felt
- 57 W27 Knife Oiler
- 58 W29 Spring For Oiler
- 59 W30 Screw For Oiler
- 60 B72 Grinding Assembly
- 61 B7 Grinding Wheel
- 62 B8 Grinding Wheel Shaft
- 63 B6 Grinding Wheel Base
- 64 B55 Grinding Shaft
- 65 B56 Spring
- 66 B4 Spring
- 67 B3 Grinding Button
- 68 B77 Grinding Assembly
- 69 B8-1 Grinding Wheel Shaft
- 70 B74 Grinding Shaft
- 71 B75 618-3 Bearing
- 72 B76 Collar
- 73 B78 Φ 2E Shaft Ring
- 74 B3-1 Grinding Button
- 75 B71 Pin
- 76 B70 Spanner

DIRECTION

RS-70 electric scissors is suitable for clothes , shoes and hats ties, umbrella enterprise. It can cut off quickly and is portable and flexible . This machine has reasonable structure and all the necessary function.

Technical specification:

Blade Size: ϕ 70 mm
Pruning height:25 mm
Power: 170 w

Blade speed:2400 cycles
Voltage: single-phrase 100V~120V;220V~240V

1. Common usage and assembling

1. Mill blade: Start electric scissors , press abrasive stick (B3) the abrasive wheel (B7) will mill the blades automatically, to keep the blade sharp. If the abrasive wheel has more greasy dirt, should use it after cleaning or changing.

2. Blade load and unload: The blade is revolved to abrasive wheel hole , insert cylindrical pin to use flatt hand (appendix) to revolve out or compress blade hat (B22) .

3. Change other parts according to the order of three - dimensional assembly drawing.

2. Maintenance point

1. The abrasive wheel (B7) has more greasy dirt , it should be cleaned and changed in time to make sure of milling blade effectively and keep the blade sharp, reduce the shoulder of the electric machine.

2. Clean fine dirt: Should clean the fine dirt behind the blade and in the electric machine to avoid damage.

3. Worm wheel lubricate: Normally use electric scissors, the grease in the oil cup (B9) stakes abrasive wheel twice ~three times a month.

4. Blade lubricate: Before using , stakes 30 # oil to lubricative cotton(W28) to reduce the friction between the small blade and below blade.

5. Change the electric brush: After turning for a long time , has damaged a half, should change the electric brush with the power cut off (if the electric motor is operating unnormally, please stop the machine at once to check the electric brush is normal).

3. The reason of cancelling cloth , blocking cloth and cut down hard and remove

Reason	Remove
Below blade (B24) or blade (B21) has breach or damage	Change
The position , angle and elasticity between blade and below blade	1 . Adjust blade below 2. Below blade must be leaned against the blade as min angle , suitable elasticity
Over greasy dirt of the abrasive wheel	After getting rid of abrasive wheel greasy dirt , start mill blade

4. Make sure to:

1. Operating voltage must be normal and connect earth wire for safety, to avoid shock.

2. Do not touch the high speed moving blade with fingers or another body organ.

3. When to load and unload parts, the power plug must be pulled down.

4. Forbid to plug the fanlight.