

# **VEVOR<sup>®</sup>**

## **TOUGH TOOLS, HALF PRICE**

Technical Support and E-Warranty Certificate [www.vevor.com/support](http://www.vevor.com/support)

## **ROLLING SIGNAGE**

We continue to be committed to provide you tools with competitive price. "Save Half", "Half Price" or any other similar expressions used by us only represents an estimate of savings you might benefit from buying certain tools with us compared to the major top brands and does not necessarily mean to cover all categories of tools offered by us. You are kindly reminded to verify carefully when you are placing an order with us if you are actually saving half in comparison with the top major brands.

# VEVOR®

TOUGH TOOLS, HALF PRICE






## NEED HELP? CONTACT US!

Have product questions? Need technical support? Please feel free to contact us:

**Technical Support and E-Warranty Certificate**

**[www.vevor.com/support](http://www.vevor.com/support)**

This is the original instruction, please read all manual instructions carefully before operating. VEVOR reserves a clear interpretation of our user manual. The appearance of the product shall be subject to the product you received. Please forgive us that we won't inform you again if there are

	<p>Warning-To reduce the risk of injury, user must read instructions manual carefully.</p>
	<p>Compliance is a EC security certification.</p>
	<p><b>CORRECT DISPOSAL</b></p> <p>This product is subject to the provision of European Directive 2012/19/EC. The symbol showing a wheeled bin crossed through indicates that the product requires separate refuse collection in the European Union. This applies to the product and all accessories marked with this symbol. Products marked as such may not be discarded with normal domestic waste, but must be taken to a collection point for recycling electrical and electronic devices</p>

## IMPORTANT SAFEGUARDS

### WARNING

**READ THESE INSTRUCTIONS COMPLETELY AND CAREFULLY**

**WARNING: FAILURE TO FOLLOW THESE INSTRUCTIONS AND WARNINGS MAY RESULT IN DEATH, SERIOUS INJURY OR**

**SIGNIFICANT PROPERTY DAMAGE. FOR YOUR PROTECTION, READ AND FOLLOW THESE WARNINGS AND INSTRUCTIONS**

**CAREFULLY BEFORE INSTALLING OR MAINTAINING THIS EQUIPMENT. THESE INSTRUCTIONS DO NOT ATTEMPT TO**

**COVER ALL INSTALLATION AND MAINTENANCE SITUATIONS. IF YOU DO NOT UNDERSTAND THESE INSTRUCTIONS OR**

**ADDITIONAL INFORMATION IS REQUIRED, CONTACT THE MANUFACTURER.**

**IMPORTANT SAFEGUARDS: WHEN USING ELECTRICAL EQUIPMENT, BASIC SAFETY PRECAUTIONS SHOULD ALWAYS BE FOLLOWED, INCLUDING THE FOLLOWING:**

1. Do not use outdoors.
2. Equipment should be mounted in locations and at heights where it will not be subject to tampering by unauthorized personnel.
3. Do not mount near gas or electric heaters. Keep combustible material away from hot parts.
4. Cap unused wires with enclosed wire nuts or other approved methods. Do not use this equipment for other than its intended use. The use of accessory equipment not

recommended by the manufacturer will void warranty and may cause an unsafe condition.

5. Before wiring to power supply, turn off electricity at fuse or circuit breaker.
6. Use caution when servicing batteries.
7. Installation and servicing should be performed by qualified personnel. Consult local building code for approved wiring and installation. Make sure wire terminations are secure and leads are properly tucked in appropriate wire channels.

**WARNING: NEVER CONNECT TO, DISCONNECT FROM, OR SERVICE WHILE EQUIPMENT IS ENERGIZED.**

## SAVE THESE INSTRUCTIONS

### FCC INFORMATION

**CAUTION:**

Changes or modifications not expressly approved by the party responsible for compliance could void the user's authority to operate the equipment! This device complies with Part 15 of the FCC Rules. Operation is subject to the following two conditions:

- 1) This product may cause harmful interference.
- 2) This product must accept any interference received, including interference that may cause undesired operation.

**WARNING:**

Changes or modifications to this product not expressly approved by the party responsible for compliance could void the user's authority to operate the product.

**Note:**

This product has been tested and found to comply with the limits for a Class B digital device pursuant to Part 15 of the FCC Rules, These limits are designed to provide reasonable protection against harmful interference in a residential installation.

This product generates, uses and can radiate radio frequency energy, and if not installed and used in accordance with the instructions, may cause harmful interference to radio communications. However, there is no guarantee that interference will not occur in a particular installation. If this product does cause harmful interference to radio or television reception, which can be determined by turning the product off and on, the

user is encouraged to try to correct the interference by one or more of the following measures.

- Reorient or relocate the receiving antenna.
- Increase the distance between the product and receiver.
- Connect the product to an outlet on a circuit different from that to which the receiver is connected.
- Consult the dealer or an experienced radio/TV technician for assistance.

## PRODUCT PARAMETERS

<b>MODEL</b>	<b>Electrical parameters</b>	<b>Pixel density</b>	<b>display resolution</b>
P10-1696RGB	European Union: AC220-240V 50Hz EU PLUG	P10 (10mm distance between dots)	16 x 96 dots.
	North America: AC120V 60Hz US PLUG		
	Australia: AC220-240V 50Hz AUS PLUG		
P10-3296RGB	European Union: AC220-240V 50Hz EU PLUG	P10 (10mm distance between dots)	32 x 96 dots.
	North America: AC120V 60Hz US PLUG		
	Australia: AC220-240V 50Hz AUS PLUG		
P10-16128RGB	European Union: AC220-240V 50Hz EU PLUG	P10 (10mm distance between dots)	16 x 128 dots.
	North America: AC120V 60Hz US PLUG		
	Australia: AC220-240V 50Hz AUS PLUG		

P6-64160RGB	European Union: AC220-240V 50Hz EU PLUG	P6 (6mm distance between dots)	64 x 160 dots.
	North America: AC120V 60Hz US PLUG		
	Australia: AC220-240V 50Hz AUS PLUG		
P5-64128RGB	European Union: AC220-240V 50Hz EU PLUG	P5 (5mm distance between dots)	64 x 128 dots.
	North America: AC120V 60Hz US PLUG		
	Australia: AC220-240V 50Hz AUS PLUG		

It can be operated on a computer. The following is the software download address.

<http://iledshow.cn:9000/hdrar/hd2020v1.3.2.1.exe>

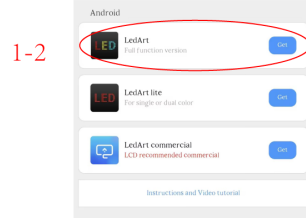
☐ note that the software is not suitable for Apple computers ☐

APP: Android mobile phone system, Apple mobile phone system.

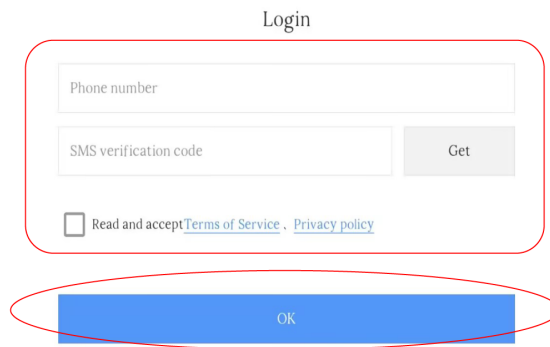
**THE FOLLOWING ARE THE OPERATION STEPS**

## Mobile APP(LedArt) operation instructions

1.APP download: scan the qr code to download the app(can also be searched and downloaded the app "ledart" from android app market or app store)



2.APP registration: when using it for the first time, you need to register the "ledart" app. you can use it after the registration is completed.



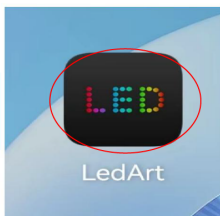
3.led screen power-on: after connecting to the power supply, the prefabricate information (welcome) will be displayed on the led screen.

4.Connect the LED screen

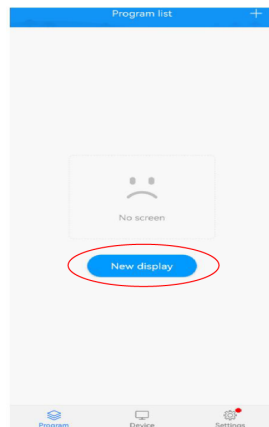
Click **LedArt APP** from the mobile phone interface(4-1), click **New display**(4-2),then click Find device, connet the WIFI starting with **WF1\_...** or **WF2\_...** (4-3). the original WiFi password is: 88888888; the WiFi connection is successful You will be prompted "Do you want to continue using this WLAN?", please click **Use**(4-4).

Note: After the screen check is successful, it will automatically jump to the WiFi connection interface. After connecting to WiFi, it will return to the APP software interface. The APP software interface will automatically display the parameter information of the LED screen. No modification is required and must not be modified.

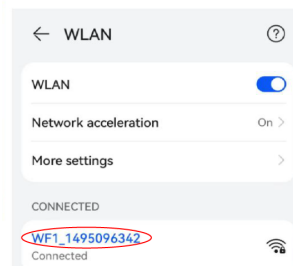
4-1



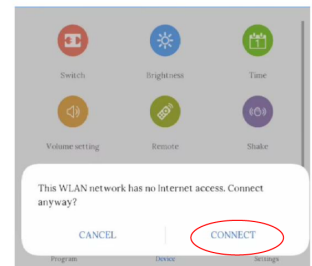
4-2



4-3

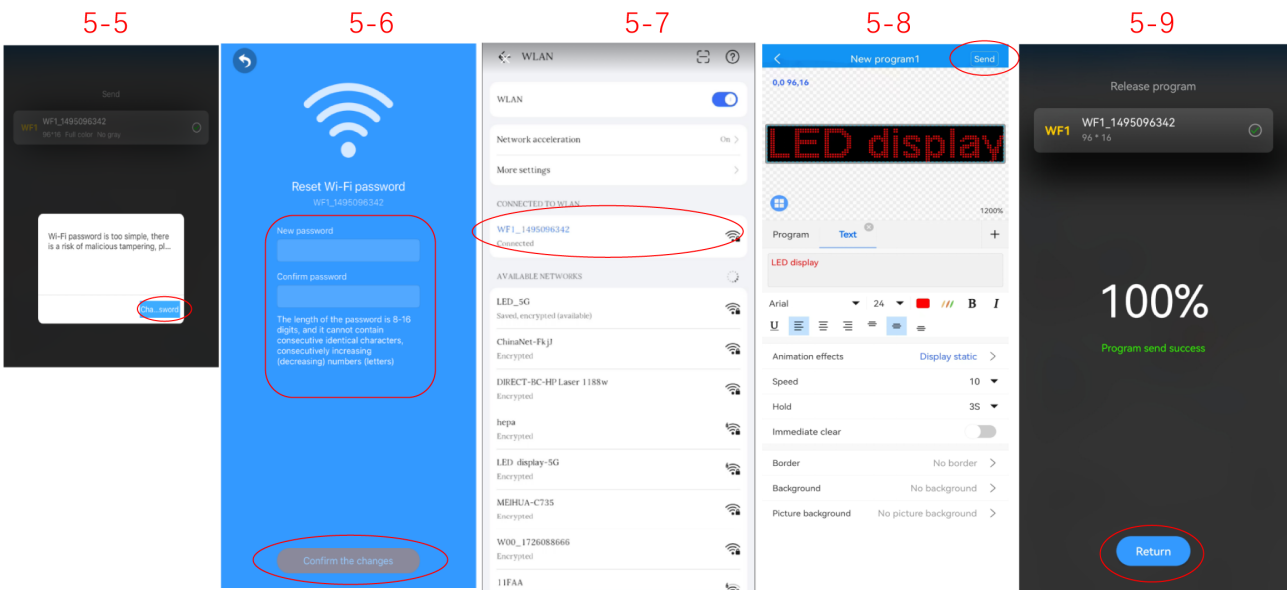
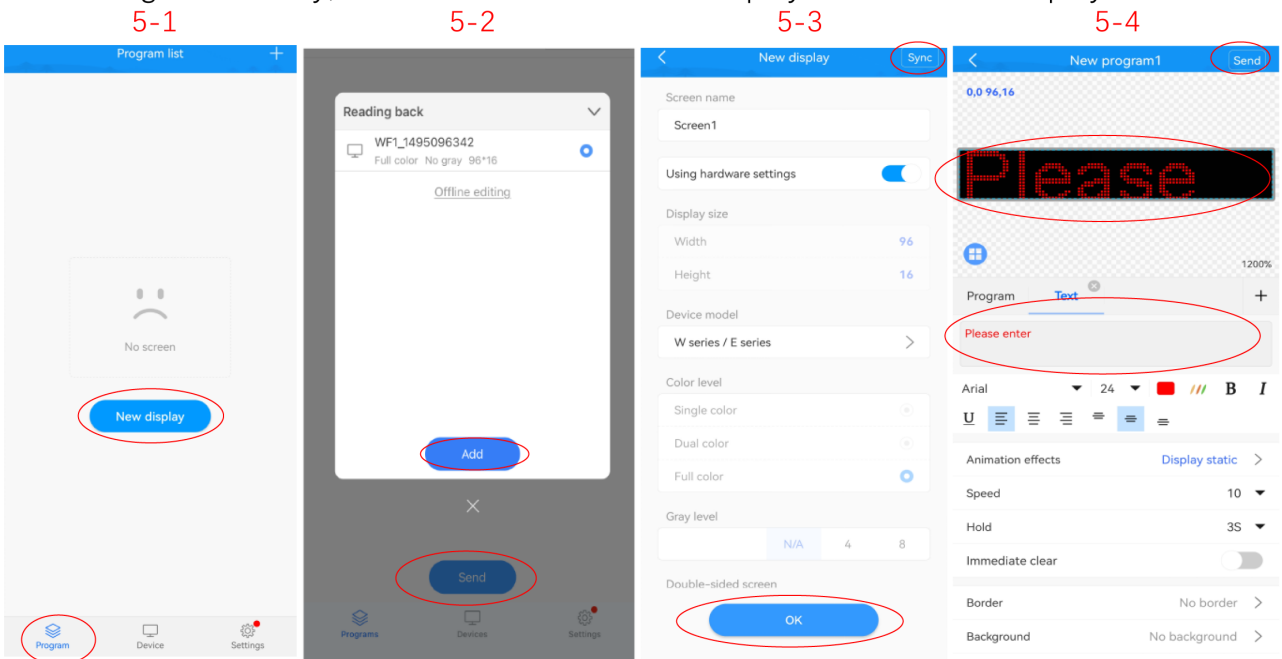


4-4



5.Edit and send programs: Click **New display** in the main interface program (5-1) , Then click **Add**(5-2),click **Sync** in the upper right corner(5-3). Reading back this step is very important.After the readback is successful, it will automatically jump to the editing information interface;

Edit text or pictures in the edit box(5-4).After the editing is completed, click **Send** and the modified password will be **required**(5-5). **Confirm the changes** and be sure to remember the modified password(5-6). After the modification is completed, you need to exit the software and go to the WiFi interface to reconnect to WiFi(5-7). After the connection is successful, click **Send again**(5-8) and the Send Completed message will be displayed (5-9).After sending successfully, the edited content will be displayed on the LED display.

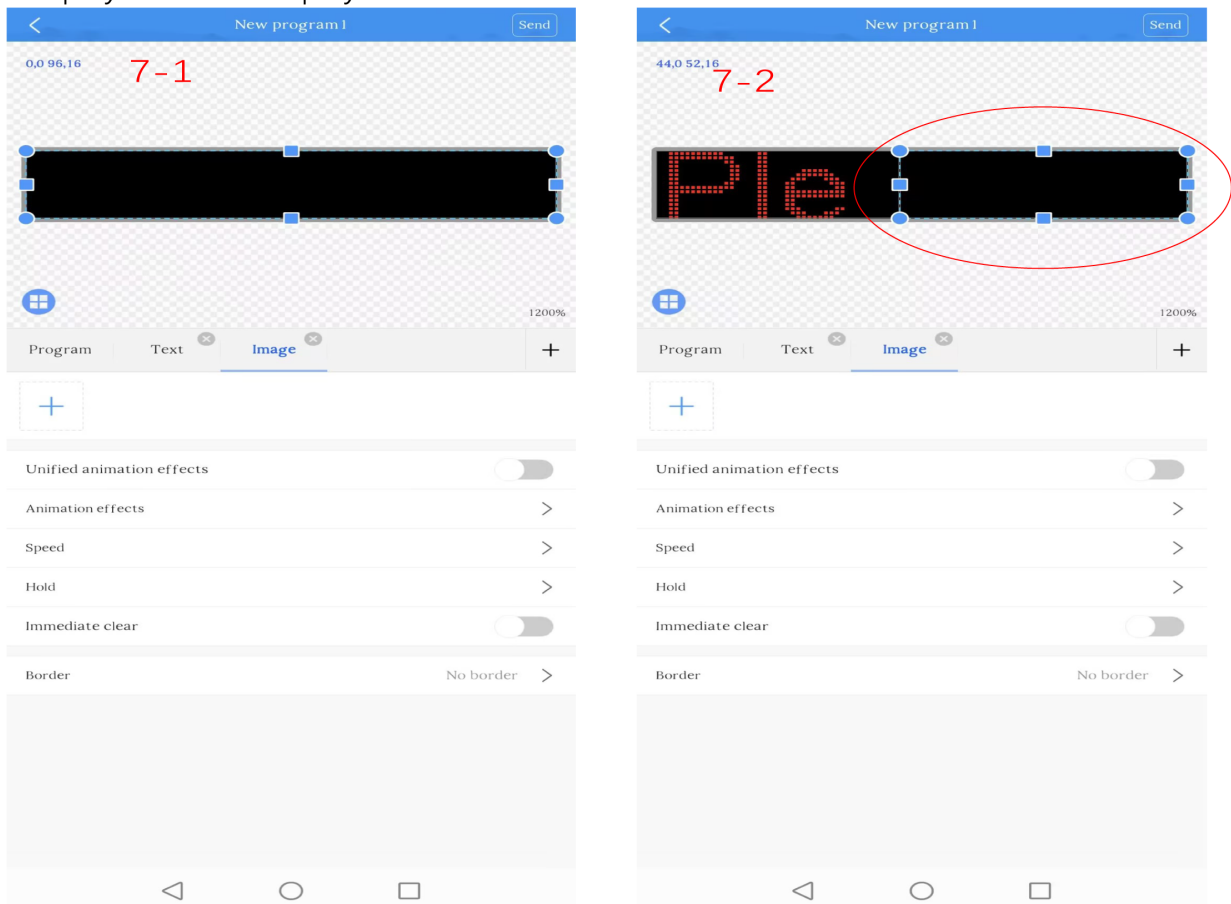




6.The following is an introduction to the functions of Ledart software:



7.The software editing interface contains Text, Image, Animated word and other functions; the program interface can be partitioned into multiple areas for display, Text and Images are displayed on the display screen at the same time.

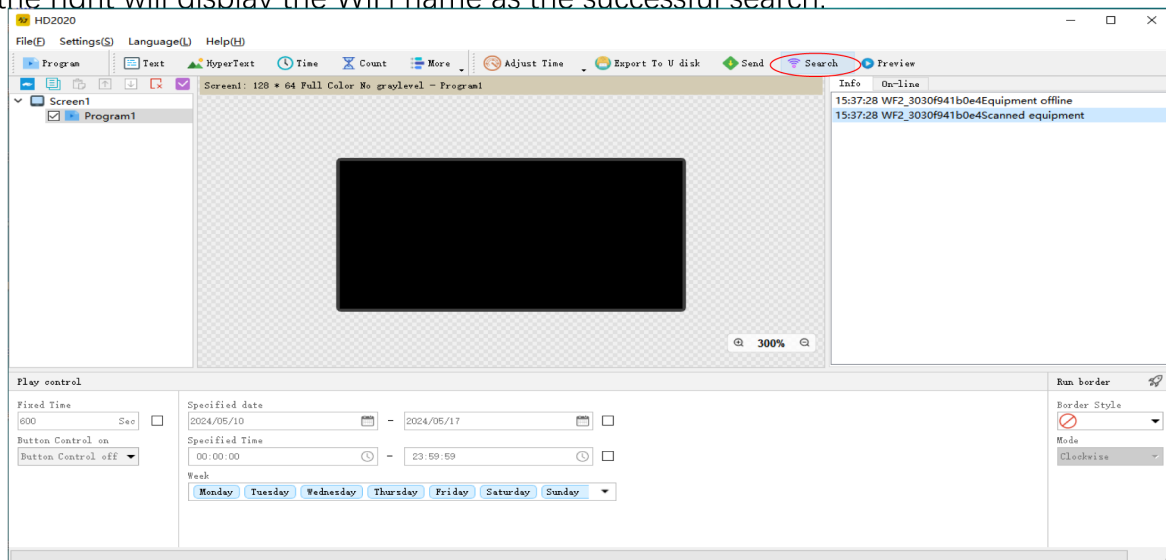


## Computer side operation instructions

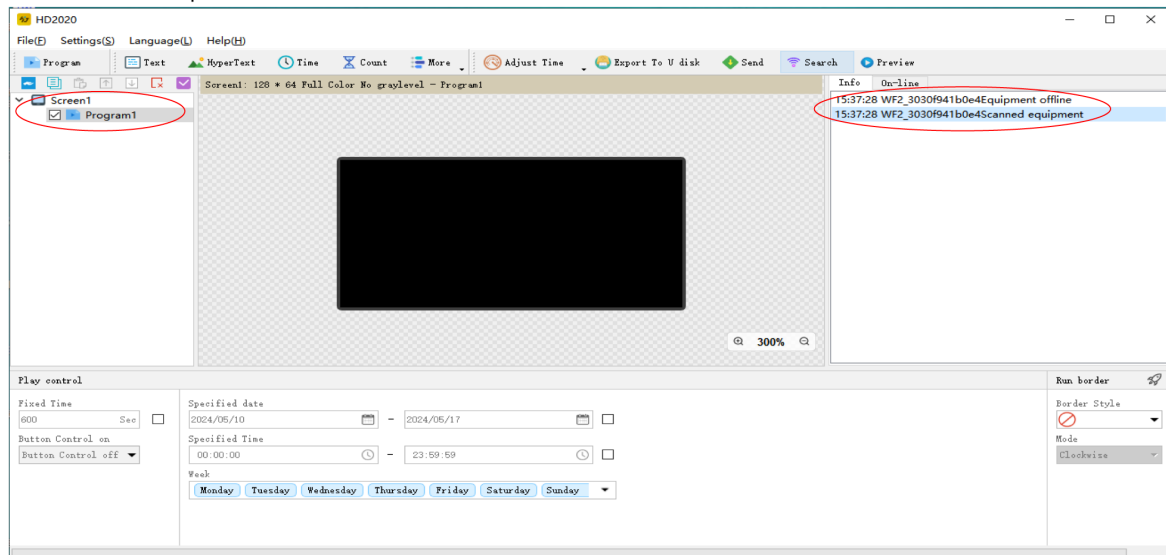
- 1: HD2020software downloading link <http://iledshow.cn:9000/-drar/hd2020v1.3.2.1.exe> ( it supports Windows system)
- 2: Computer connect the WiFi(from the display) named WF\*\*\*\*\* , the password is: 88888888



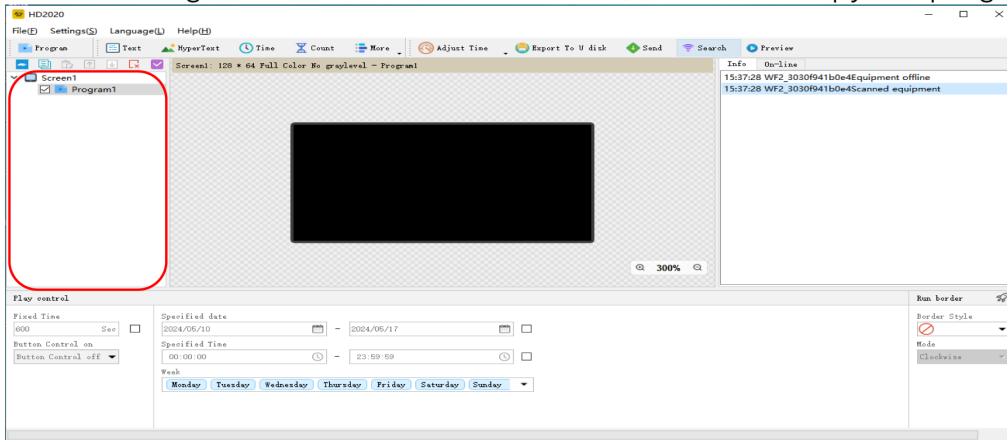
- 3: Open the software HD2020 after connected WiFi , click [search](#) , the information status on the right will display the WiFi name as the successful search.



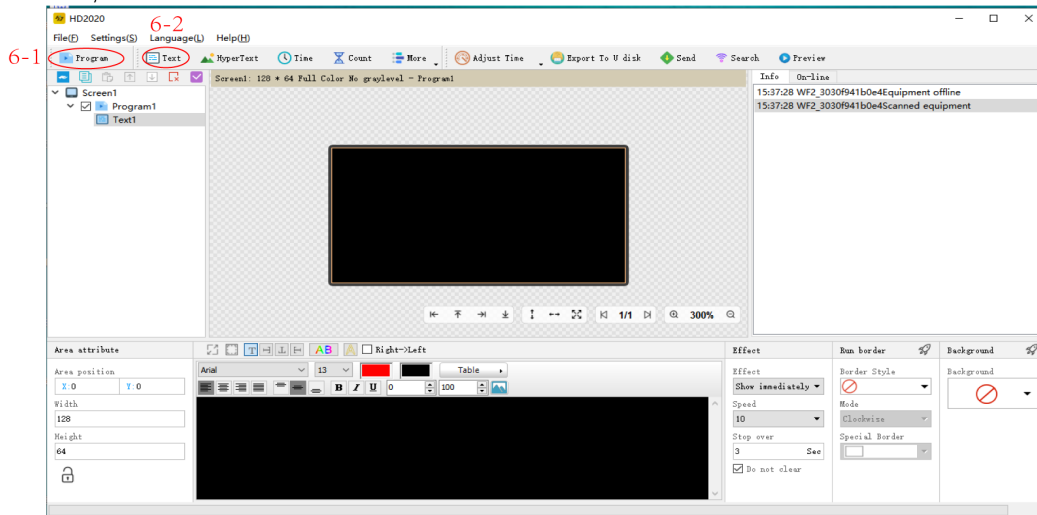
- 4: The Text and picture could be edited now.



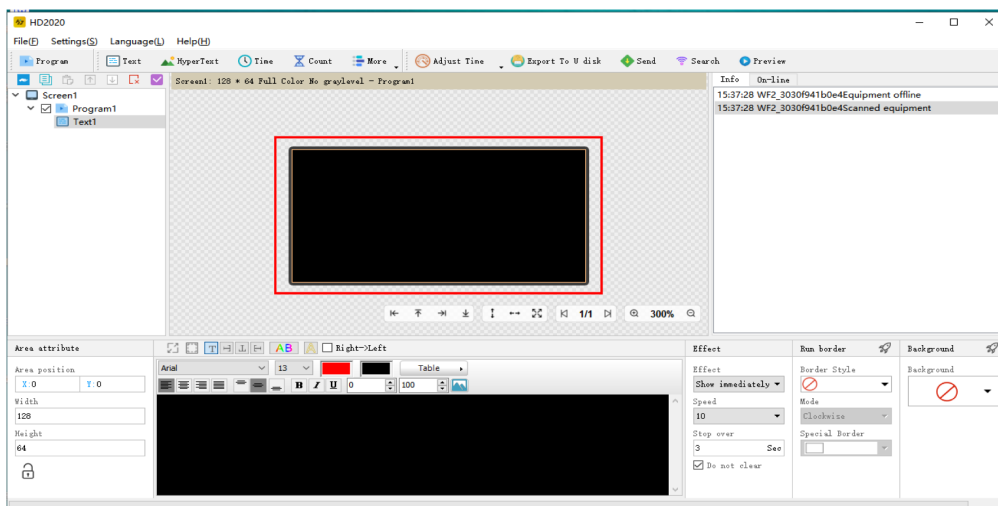
5: The operating panel is shown in the figure. Click the text, graphic and text above the interface to automatically add programs. The show is added to the display screen on the left side of the interface. Right -click on the mouse to add, delete and copy the program.



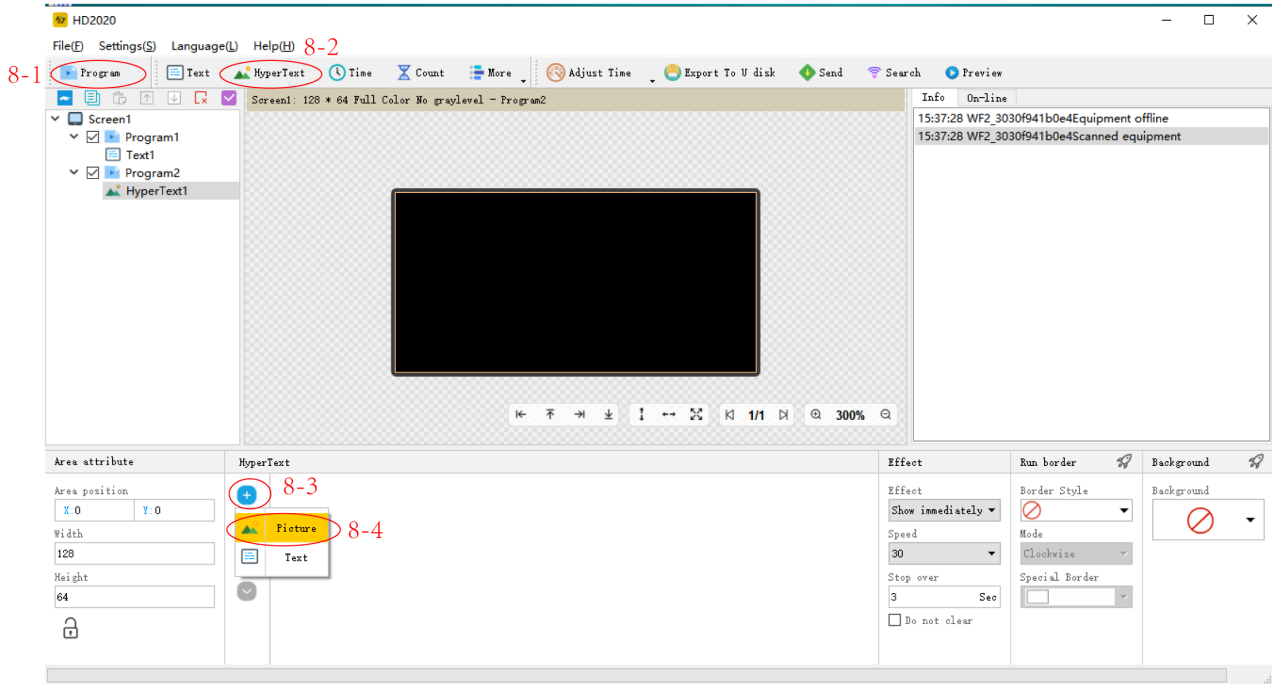
6: Click **program**(6-1), Click **text**(6-2), and the editing interface appears under the interface. You can add the text you want in the black area. You can modify the text color, alignment method, etc.



7: Hold the black rectangular orange thread of the mouse can be dragged freely to achieve partitions. After entering the partition text, click to send it. Multiple texts can be displayed on the same display screen



8: Add picture method: Add picture show on the left side of the interface, click the blue "+" on the left, click the picture, find the picture you want to upload



(Note: The process of sending the program will automatically jump to modify the password because the password is too simple. Remember to modify the password at this time. After the password is modified, re -connect the WiFi starting from the WF. After the connection is successful)

## FAULTS AND REMEDIES

1. If the product is warped, please reset it according to the instructions.
2. If a board is not bright or insufficient when the product is working, the cable inside the product is loose. You can open the backboard, pull the cable, and plug it in again.
3. If several lamp beads do not light up when the product works, you must contact customer service to replace the module.
4. If you have any problems, please get in touch with our customer service quickly and let us solve them for you faster.

**Manufacturer:** Shanghai muxinmuyeyouxiangongsi

**Address:** Shuangchenglu 803nong11hao1602A-1609shi, baoshanqu, shanghai 200000 CN.

**Imported to AUS:** SIHAO PTY LTD, 1 ROKEVA STREET EASTWOOD NSW 2122 Australia

**Imported to USA:** Sanven Technology Ltd.

Suite 250,9166 Anaheim Place, Rancho Cucamonga, CA 91730

<b>EC</b>	<b>REP</b>
-----------	------------

**E-CrossStu GmbH.**  
**Mainzer Landstr.69, 60329**  
**Frankfurt am Main.**

<b>UK</b>	<b>REP</b>
-----------	------------

**YH CONSULTING LIMITED.**  
**C/O YH Consulting Limited Office 147,**  
**Centurion House, London Road,**  
**Staines-upon-Thames, Surrey, TW18 4AX**

**VEVOR<sup>®</sup>**

**TOUGH TOOLS, HALF PRICE**

Technical Support and E-Warranty Certificate  
[www.vevor.com/support](http://www.vevor.com/support)