

VEVOR[®]

TOUGH TOOLS, HALF PRICE

Technical Support and E-Warranty Certificate www.vevor.com/support

GREASE TRAP

USER MANUAL

YSFLQ35*25*25

YSFLQ60*40*40

YSFLQ37*26*26

YSFLQ63*31*32

YSFLQ60*40*39

We continue to be committed to provide you tools with competitive price.

"Save Half", "Half Price" or any other similar expressions used by us only represents an estimate of savings you might benefit from buying certain tools with us compared to the major top brands and does not necessarily mean to cover all categories of tools offered by us. You are kindly reminded to verify carefully when you are placing an order with us if you are actually saving half in comparison with the top major brands.

VEVOR®

TOUGH TOOLS, HALF PRICE

GREASE TRAP



YSFLQ35*25*25



YSFLQ60*40*40



YSFLQ37*26*26



YSFLQ63*31*32

YSFLQ60*40*39

NEED HELP? CONTACT US!

Have product questions? Need technical support? Please feel free to contact us:

Technical Support and E-Warranty Certificate
www.vevor.com/support

This is the original instruction, please read all manual instructions carefully before operating. VEVOR reserves a clear interpretation of our user manual. The appearance of the product shall be subject to the product you received. Please forgive us that we won't inform you again if there are any technology or software updates on our product.

SAFETY INSTRUCTIONS

WARNING:

Read this material before using this product. Failure to do so can result in serious injury.

Assembly precautions

1. Assemble only according to these instructions. Improper assembly can create hazards.
2. Wear safety goggles and duty work gloves during assembly.
3. Keep the assembly area clean and well-lit.
4. Keep bystanders out of the area during assembly.
5. Do not assemble when tired or when under the influence of alcohol, drugs or medication.
6. The product capabilities apply to properly and completely assembled products only.
7. Assemble on a flat, level, hard and smooth surface capable of safely supporting the GREASE TRAP.
8. For additional information regarding the parts listed in the following pages, please refer to the Assembly Diagram of this manual. Unwrap and separate all parts in a clean work area.

Use precautions

1. DO NOT SIT OR STAND ON THIS ITEM.
2. This product is not a toy. Do not allow children to play with or near this item.
3. Do not exceed capacities.
4. Use only on a flat, level, hard and smooth surface capable of safely supporting a fully loaded GREASE TRAP.
5. Use as intended only.
6. Inspect before every use; do not use if parts are loose or damaged.

SAVE THIS MANUAL

PRODUCT PARAMETER

Model	Water Intake Mode	Product Size
YSFLQ35*25*25	Side Entrance	350*250*250mm
YSFLQ60*40*40	Side Entrance	600*400*400mm
YSFLQ37*26*26	Top Entrance	350*250*250mm
YSFLQ63*31*32	Top Entrance	630*310*320mm
YSFLQ60*40*39	Top Entrance	600*400*390mm

PARTS LIST

MODEL Name	YSFLQ35*25*25 YSFLQ37*26*26	YSFLQ60*40*40 YSFLQ63*31*32 YSFLQ60*40*39	
	Qty	Qty	
Drain Pipe	1	1	
Drain Pipe Gasket	1	1	
Male Adapter	1	2	
Rubber Pad	1	2	
Nut	1	2	
Gasket	1	2	
Valve Switch	1	2	
Seal Tape	1	1	

INSTRUCTIONS

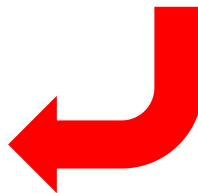
STEP1

Place the product and parts horizontally on the floor.



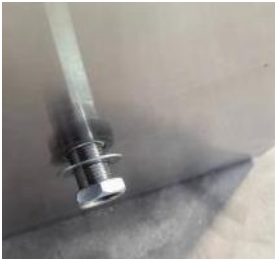
STEP2

Install the drain pipe gasket in place and install it at the outlet of the oil-water separator.



STEP3

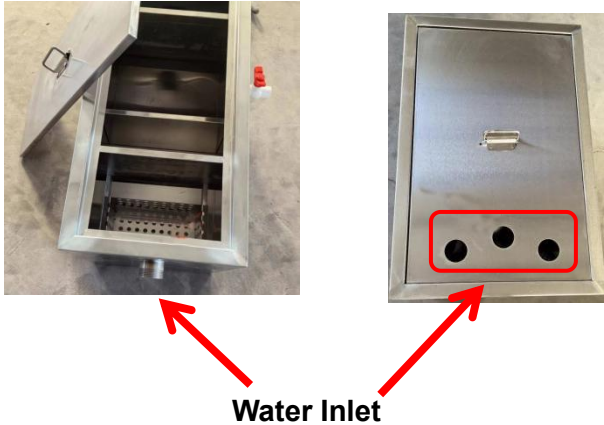
Install the Rubber Pad in place, secure it with Gasket and Nut, wrap Seal Tape around the Male Adapter, and finally install the Valve Switch.



STEP4

Insert the water inlet pipe into the water inlet.

Note: The water inlet pipe should be placed in the middle of the filter screen.



Address: Baoshanqu Shuangchenglu 803long 11hao 1602A-1609shi
Shanghai

Imported to AUS: SIHAO PTY LTD. 1 ROKEVA STREETEASTWOOD
NSW 2122 Australia

Imported to USA: Sanven Technology Ltd.Suite 250.
9166 Anaheim Place, Rancho Cucamonga, CA 91730

EC	REP
-----------	------------

SHUNSHUN GmbH
Römeräcker 9 Z2021,76351
Linkenheim-Hochstetten,Germ

UK	REP
-----------	------------

Pooledas Group Ltd
Unit 5 Albert Edward House, The
Pavilions Preston, United Kingdom

Made In China

VEVOR[®]

TOUGH TOOLS, HALF PRICE

Technical Support and E-Warranty Certificate

www.vevor.com/support