

VEVOR[®]

TOUGH TOOLS, HALF PRICE

Technical Support and E-Warranty Certificate www.vevor.com/support

PYROGRAPH MACHINE

We continue to be committed to provide you tools with competitive price.

"Save Half", "Half Price" or any other similar expressions used by us only represents an estimate of savings you might benefit from buying certain tools with us compared to the major top brands and does not necessarily mean to cover all categories of tools offered by us. You are kindly reminded to verify carefully when you are placing an order with us if you are actually saving half in comparison with the top major brands.

VEVOR[®]

TOUGH TOOLS, HALF PRICE

PYROGRAPH MACHINE

MODEL:LH50








NEED HELP? CONTACT US!

Have product questions? Need technical support? Please feel free to contact us:

Technical Support and E-Warranty Certificate
www.vevor.com/support

This is the original instruction, please read all manual instructions carefully before operating. VEVOR reserves a clear interpretation of our user manual. The appearance of the product shall be subject to the product you received. Please forgive us that we won't inform you again if there are any technology or software updates on our product.

	<p>Warning-To reduce the risk of injury, user must read instructions manual carefully.</p>
	<p>FCC STATEMENT This device complies with Part 15 of the FCC Rules. Operation is subject to the following two conditions:(1)This device may not cause harmful interference, and (2)this device must accept any interference received, including interference that may cause undesired operation.</p>
	<p>CORRECT DISPOSAL This product is subject to the provision of European Directive 2012/19/EC. The symbol showing a wheelie bin crossed through indicates that the product requires separate refuse collection in the European Union. This applies to the product and all accessories marked with this symbol. Products marked as such may not be discarded with normal domestic waste, but must be taken to a collection point for recycling electrical and electronic devices</p>
	<p>This symbol, placed before a safety comment, indicates a kind of precaution, warning, or danger. Ignoring this warning may lead to an accident. Please always follow the recommendation below to reduce the risk of injury, fire, or electrocution.</p>
	<p>This product is of protection class II. That means it is equipped with enhanced or double insulation.</p>

IMPORTANT SAFEGUARDS

WARNING:

1. Warnings must be followed carefully to avoid body injury. Improper use may result in electric shock, fire, personal injury, and other damage:

- 1) Keep unplugged when moving the machine.
- 2) Keep unplugged when installing accessories.
- 3) Place on a flat and stable platform and operate under ventilated conditions.
- 4) Wear special protective equipment when operating the machine.
- 5) Do not use this machine in a hazardous location.
- 6) Only use it when the machine is working correctly.
- 7) Do not disassemble and repair this machine.
- 8) Do not use an unsuitable AC outlet.
- 9) Do not touch the heating plate when the machine is heating.
- 10) Do not use in humid environments or in contact with water. Also, do not infiltrate liquid in the machine to prevent fire or electric shock caused by a short circuit.
- 11) Do not use the power supply that does not meet the rated voltage. The power supply that does not meet the specified voltage may cause fire or electric shock.
- 12) Ensure that the machine is grounded so as not to cause harm to body.
- 13) Do not touch the rotating rod or bearing part with your fingers during use in case of injuries.
- 14) If the machine is not in use for a long time, please unplug the power cord from the socket.
- 15) Do not use the machine during thunderstorms or lightning to avoid damage to the machine.
- 16) Place the machine smoothly on the flame-retardant table and keep away from flammable and explosive items.
- 17) Please stop using it if the machine smokes, emits a peculiar smell, or becomes noisy and in other abnormal conditions.
- 18) This appliance can be used by children aged 8 years and above and persons with reduced physical, sensory or mental capabilities or lack of experience and knowledge if they have been given supervision or instruction concerning use of the appliance in a safe way and understand the hazards involved. Children shall not play with

the appliance. Cleaning and user maintenance shall not be made by children without supervision.

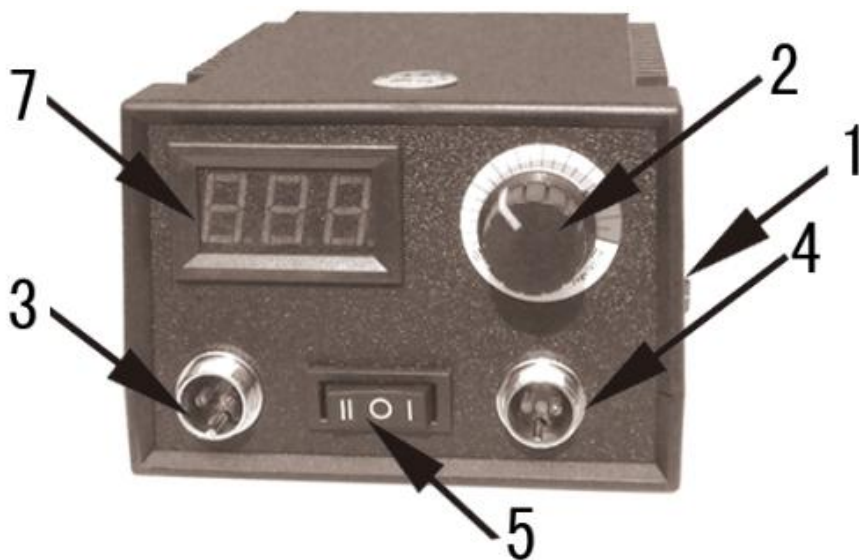
2. Type Y attachment: If the supply cord is damaged, it must be replaced by the manufacturer, its service agent or similarly qualified persons in order to avoid a hazard.

3. In order to avoid a hazard due to inadvertent resetting of the thermal cutout, this appliance must not be supplied through an external switching device, such as a timer, or connected to a circuit that is regularly switched on and off by the utility.

4. In the process of temperature adjustment, there will be a slight delay in the digital display temperature, which is a normal phenomenon, please wait a moment.

SAVE THESE INSTRUCTIONS

Instruction Manual of LPyrograph Machine



1) Pyrograph machine switch: Turn on the switch when using it, and turn it off when not in use to avoid danger.

2) Thermostat: It is used to adjust the temperature of the pyrograph pen. The light gray part is the normal adjustment of the rendering temperature, and the red part is the high temperature area. The temperature adjustment of the electrical heating

wire pen is to slowly adjust the temperature through the temperature regulator. If it is temperature display, adjust the temperature to 700 degrees and then slowly lower it, it would be best the temperature is around 350-600 degrees and the low temperature rendering is about 350-450 degrees. When adjusting the temperature, adjust the tip of the electrical heating wire pen from a little grayish orange to not red. Don't be too red, too high temperature will make the pen soft and unable to draw normally, the performance will drop sharply, and the line drawn will be burnt.

3) pyrograph pen socket: The pyrograph pen plug should be closely matched with the socket, the plug should be inserted into the bottom of the socket, which should be closely matched to avoid overheating and burning accessories

Thermometer : The temperature of the pyrography machine is adjusted by adjusting the Temperature value, and the temperature adjustment display range is 300-700 degrees.

Precautions for pyrograph machine:

- 1) Tighten the screw of the pen tip when applying the pen tip, avoid poor contact between the pen tip and the terminal so that the pen tip is not hot. The overheating of the terminal will burn out the accessories, If the terminal is too hot, that is the pen tip is not tightly fastened, and it should be fastened with a screwdriver in time.
- 2) Select a heating wire under 1 mm as the pen tip. Do not choose other non-heating wire materials such as iron wire as the pen tip, which is very dangerous and easy to burn out all the accessories in the movement, and it is easy to cause electric shock and fire.

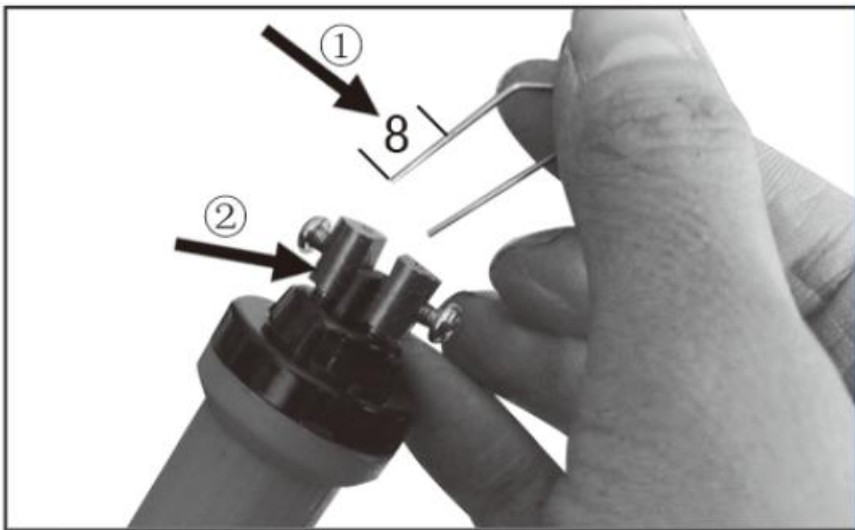
Correct installation of pen point of pyrograph

The pen point of pyrograph is not hot, and the temperature is suddenly high, and suddenly low. There are sparks coming from the pen point and the penholder is hot to grasp. What are the reasons? It's because the incorrect installation of the pen point.



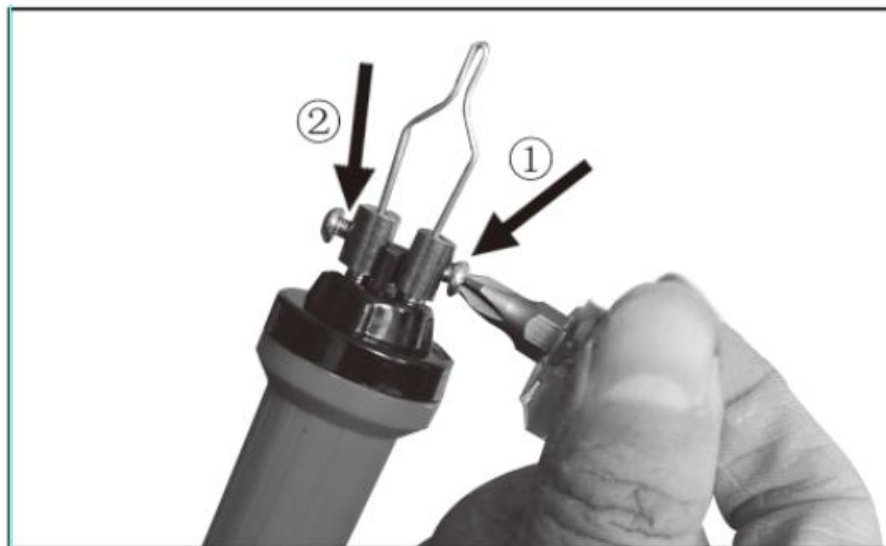
① Here the top screw needs to exit more than 4 mm, and the screw needs to exit this distance and inserts into the pen point.

② It' s wrong for screw to insert into the pen point at this distance.



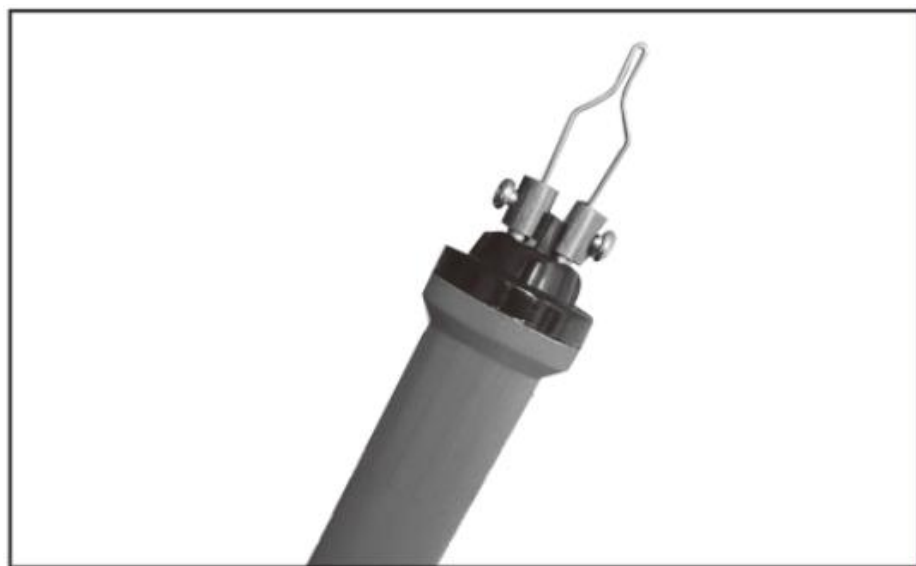
① The feet of the pen point shall be inserted into the copper binding post for more than 8 mm.

② The pen point copper binding post



① Tighten the screw with the screwdriver and tighten the feet of the pen point! It must be tightly closed; otherwise, the pen point won't be heated or its heating is abnormal or even sparks.

② The screw leaks outside too much, and it's sure the feet of pen point is not tightened which is wrong.



It' s the essential to install the pen point correctly.

there are some symptoms of the incorrect installation of pen point , which are the abnormal heat of pen point , unstable temperature of pen point, sparks generating from the pen point, the heating of copper column and the burning hot of pen holder.

Technical data

Model	LH50	
Rated voltage	120V~ 60Hz For US	220-240V~ 50Hz For EU or AU
Power	20W	

Made In China

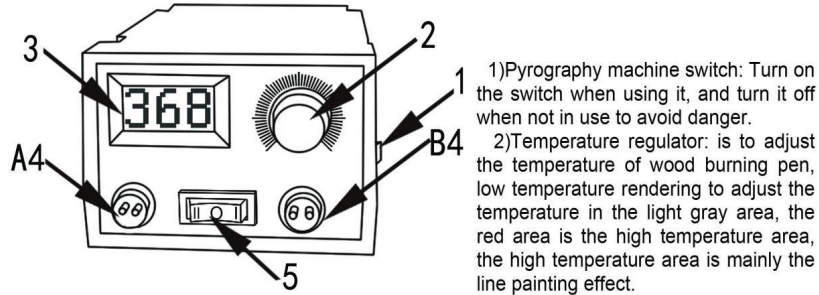
VEVOR[®]

TOUGH TOOLS, HALF PRICE

Technical Support and E-Warranty Certificate

www.vevor.com/support

Instruction Manual of LH40-2 Pyrography Machine



The adjustment of the temperature of the wood burning pen is slowly adjusted by the thermostat, first of all, the temperature is adjusted to about 600 degrees and then slowly adjusted to a lower place, the best temperature is about 300-500 degrees. Low temperature rendering is best used in the range of 250-400 degrees. When rendering temperature adjustment, watching wood burning pen can burn light colors on the material, the temperature at this time is the best rendering effect (different material density and humidity need different optimal temperatures, please be patient to debug). You can draw the color painting with different shades and layers over and over again. If the temperature is too high, it is difficult to render the delicate picture effect. When tracing the line, the temperature can be appropriately increased, and smooth lines can be drawn according to your own situation. If you want to bake the line well, you should learn to slow down the pen at low temperature. The lower the temperature of the burning wood used, the slower the writing pen, the better the painting effect.

3) Thermometer: The temperature of the pyrography machine is adjusted by adjusting the Temperature value, and the temperature adjustment display range is 250-700 degrees.

4) pyrograph pen socket: Two with dual port configuration, press the button to quickly change pens. The pyrograph pen plug should be closely matched with the socket, the plug should be inserted into the bottom of the socket, which should be closely matched to avoid overheating and burning accessories.

5) Conversion switch: When using the A-point wood burning pen, press |, and the A-point wood burning pen will be powered on and immediately generate heat. When using the B-point wood burning pen, press ||, and the B-point wood burning pen will be powered on and immediately generate heat.

Note for pyrography machine:

1) Tighten the screw of the pen tip when applying the pen tip, avoid poor contact between the pen tip and the terminal so that the pen tip is not hot. The overheating of the terminal will burn out the accessories, if the terminal is too hot, that is the pen tip is not tightly fastened, and it should be fastened with a screwdriver in time.

2) Select a heating wire under 1 mm as the pen tip. Do not choose other non-heating wire materials such as iron wire as the pen tip, which is very dangerous and easy to burn out all the accessories in the movement, and it is easy to cause electric shock and fire. movement, and it is very easy to get electric shock and fire.

Instructions for using the wood burning wire tip

1) The function of the bent shape wire pen tip is introduced



Tips for using a bent metal wire pen tip. The main function of a bent pen tip is to trace lines and render small areas of silk hair. When tracing lines, the blue indicator on the temperature control knob points towards 250C-350C. Slowly move the pen and do not move too fast. Look at the smooth edges of the line color, and the entire line color should be uniform and just right. When rendering, adjust the temperature to around 220C-300 °C, and draw hair fine lines at a temperature of around 250 °C -350C.

2) Pointed flat shape of metal wire pen head function introduction



Tips for using pointed metal wire pen tips: Pointed pen tips mainly focus on drawing fine lines and rendering fine parts. The temperature for drawing fine lines is 220-250 °C, and the temperature for rendering fine parts is 220-230 °C. When rendering, it is best to watch the color change slightly on the gourd and wooden board, and gradually deepen the color so that the color is delicate and rich. Dark color rendering is best at around 300 °C.

3) Flat shape wire pen tip function introduction



The flat metal wire pen head is mainly used for flat rendering and side silk line drawing. The temperature for flat rendering is around 220C-290 °C for light colors, and 300C-400 °C for dark colors.

Summary: The temperature of the pen head introduced earlier should not be too dogmatic and rigid. Depending on the density, humidity, and hardness of the material used for soldering, the temperature required for soldering may vary. You can learn from and adjust the experiment flexibly to find the most suitable temperature for yourself. Whether it's writing, tracing, or rendering, if you want good results, you would rather use the pen slowly at low temperatures to deepen layer by layer. Never use a pen quickly at high temperatures. It is difficult to see works with uneven lines, uneven rendering colors, uneven depth, rough and delicate images.

Correct installation of pen point of pyrography

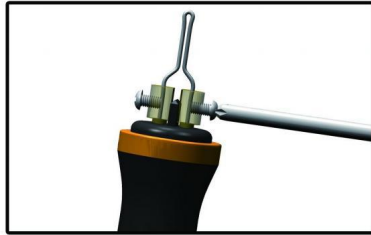
The pen point of pyrograph is not hot, and the temperature is suddenly high, and suddenly low. There are sparks coming from the pen point and the penholder is hot to grasp. What are the reasons? It's because the incorrect installation of the pen point.



1
Unscrew both screws on the pen and detach them from the hole where the pen head is installed, making it easier for the pen head to be inserted smoothly to the bottom. The effect is shown in the above picture.



2
The picture above correctly shows the effect by inserting the two pins of the pen tip into the bottom of the hole inside.



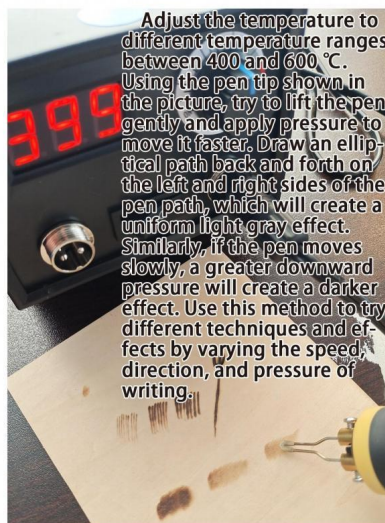
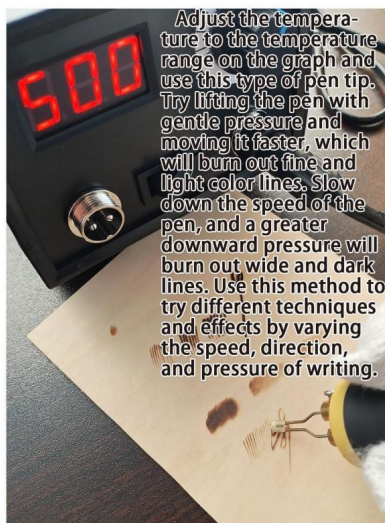
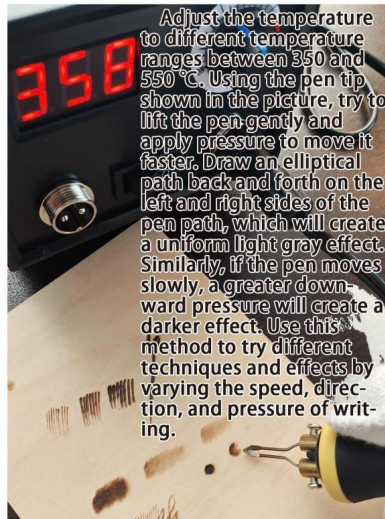
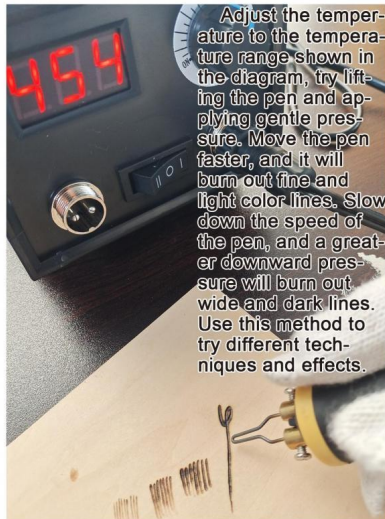
3
Finally, tighten the two screws with appropriate torque, be sure to tighten.



4
Screw does not hold pen tip two pins, error! The pen tip does not heat up properly.

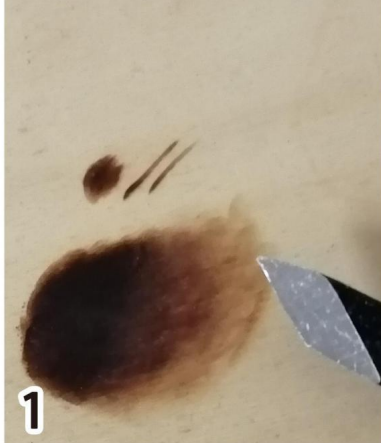
there are some symptoms of the incorrect installation of pen point , which are the abnormal heat of pen point , unstable temperature of pen point , sparks generating from the pen point, the heating of copper column and the burning hot of pen holder.

Tips for using wood burning pen tips

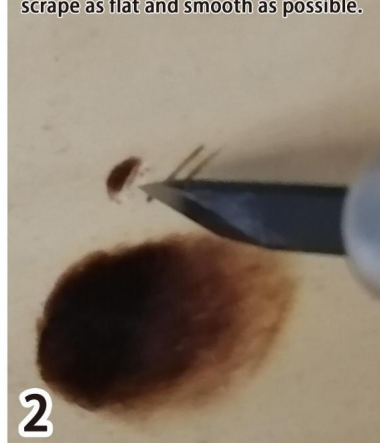


Tips for using wood burning tools and knives

This is a rendering of the wood burning just now. Later, we will demonstrate the usage techniques with a carving knife.



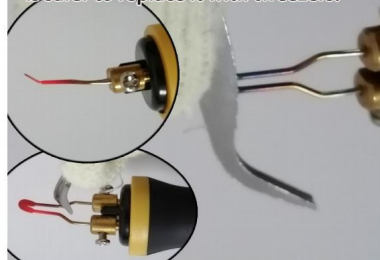
Use a carving knife to scrape off unwanted images or defects. When scraping, gently scrape and try to scrape as flat and smooth as possible.



Techniques such as using a carving knife to scrape out highlights, fine lines, and increase the brightness of local color tones in the image



1) Use tweezers to clamp and adjust the angle of the pen head. The default angle of the factory made pen head is relatively small. When increasing the angle of the pen head, first set the temperature to the highest. When the pen head turns red and has good plasticity, use tweezers to clamp and bend the angle of the pen head.
2) When replacing the pen tip, it is very hot and can easily burn the skin. It is safer to replace it with tweezers.



Precautions for using a pyrography pen holder

When using a pyrography pen, the temperature of the pen tip is very high. When placing the pen in the holder, it is important to avoid the high-temperature pen tip coming into contact with the holder to avoid burning it out. When placing the pen on the holder, use the pen holder to contact and fix the pyrography brush. It is forbidden for the high-temperature pen tip to come into contact with any part of the holder.