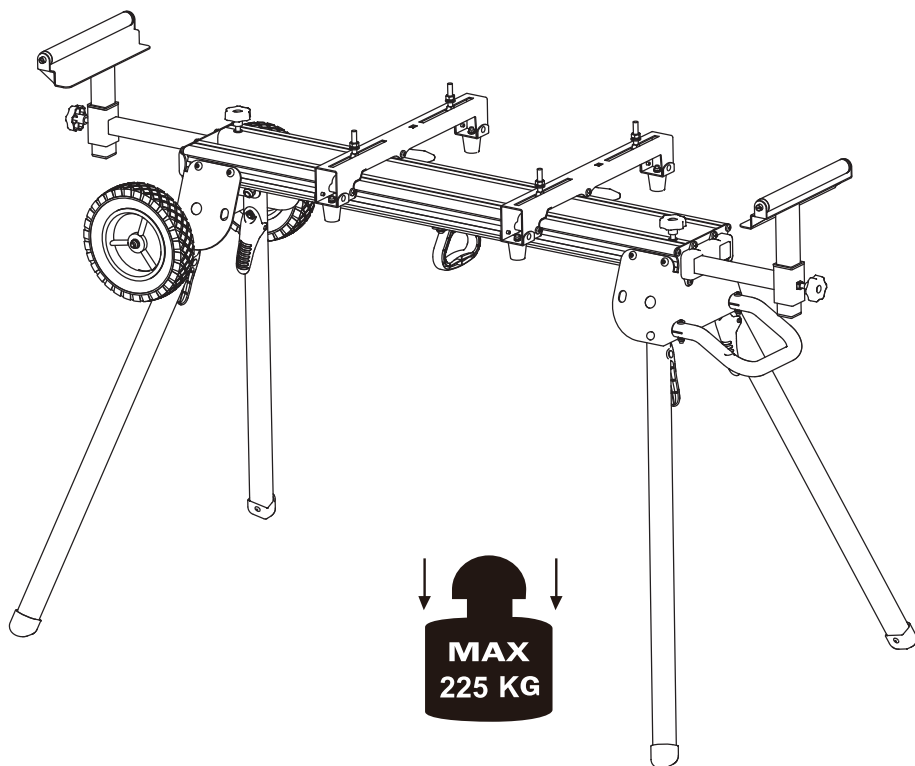


VEVOR®

**MITER SAW STAND
USER MANUAL**

YH-MS056B



NEED HELP? CONTACT US!

Have product questions? Need technical support? Please feel free to contact us:

CustomerService@vevor.com

This is the original instruction, please read all manual instructions carefully before operating. VEVOR reserves clear interpretation of our user manual. The appearance of the product shall be subject to the product you received. Please forgive us that we won't inform you again if there is any technology or software updates on our product.



Warning-To reduce the risk of injury, user must read instructions manual carefully.

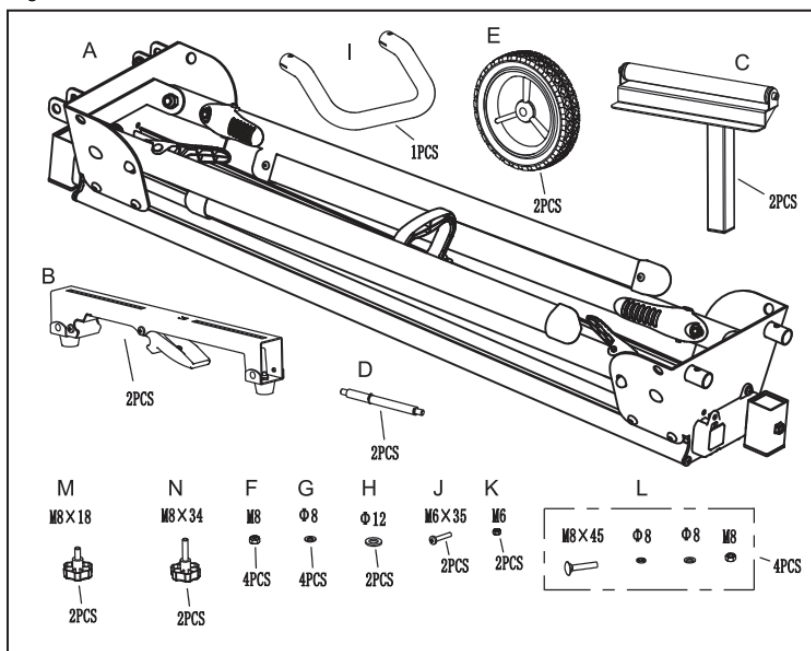
UNPACKING

Refer to Figure 1

Check for shipping damage. Check immediately whether all parts and accessories are included.

ITEM	DESCRIPTION	QTY
A	Miter Saw Stand	1
B	Quick Release Mounting Brackets	2
C	Roller Bars	2
D	Axle	2
E	Wheels	2
F	Locking Nut M8 (wheels)	4
G	Washer $\varnothing 8$ (wheels)	4
H	Washer $\varnothing 12$ (wheels)	2
I	Handle	1
J	Screw M6 x 35 (handle)	2
K	Nut M6 (handle)	2
L	Miter Saw Mounting Hardware (M8 x 45 mounting bolt, washer, lock washers and nut)	4
M	star knob screw M8x18	2
N	star knob screw M8x34	2

Figure 1

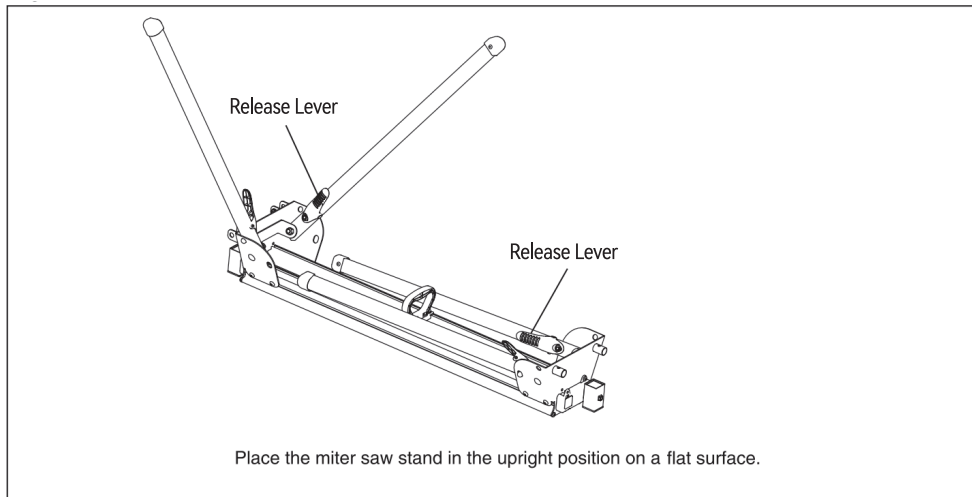


UNFOLD THE WORK LEGS

Refer to Figure 2

- Place the miter saw stand on a flat surface with the folded legs facing up.
- Depress the release lever and rotate the leg until it clicks and locks into the open position. Repeat for each leg.
- The stand should be stable and should not rock.

Figure 2



ASSEMBLE WHEELS

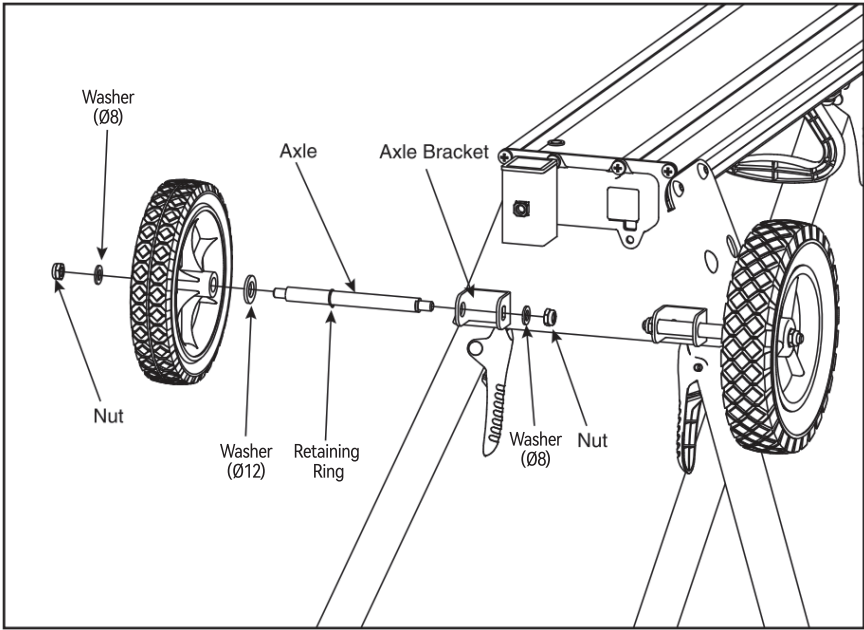
Refer to Figure 3

- Slide the axle through the axle bracket, turn the axle until the machined end fits into the inside bracket hole. Place one small (08) washer and nut onto axle. Tighten nut.

NOTE: The axle has a retaining ring on one end and is machined to fit the axle bracket hole on the other end, make sure the machined end is inserted into the axle bracket first.

- Slide one larger (Ø12) washer and the wheel on the axle. Secure in place with the small (08) washer and nut. Tighten nut. **NOTE:** Raised hub goes to the inside.
- Repeat with other wheel.

Figure 3

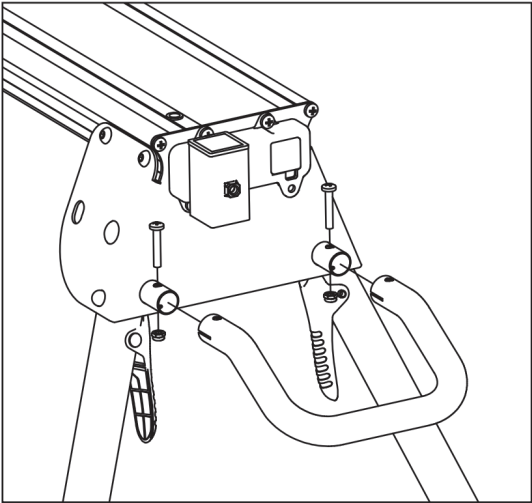


ASSEMBLE HANDLE

Refer to Figure 4

- Secure handle to frame with hardware supplied.

Figure 4

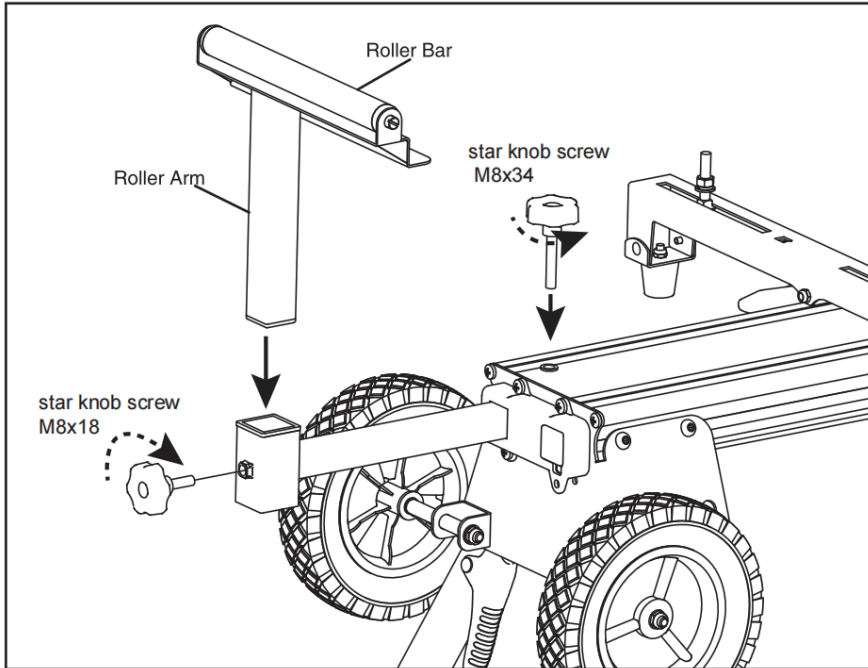


ASSEMBLE ROLLER BARS

Refer to Figure 5

- Raise the locking lever and place the roller arms into the roller bar supports, slide up and down to desired location and lower locking lever to secure in place.

Figure 5



Refer to Figure 6

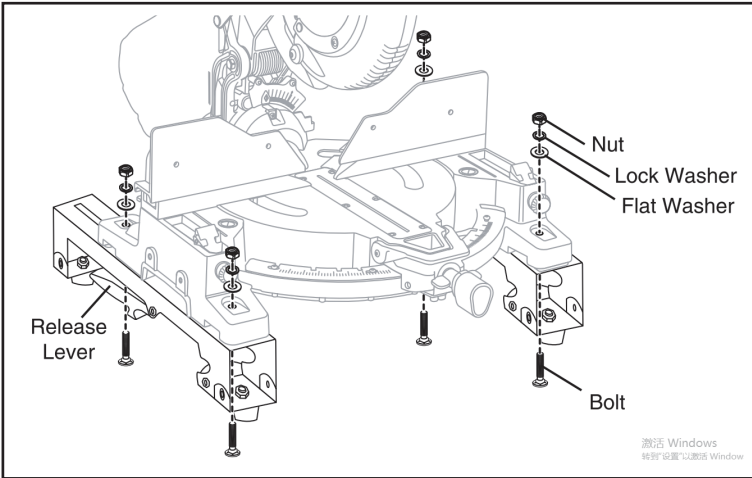
NOTE: This miter saws stand is to be used with miter saws with four mounting holes in a rectangular pattern. .

- Mount the miter saw to the quick-release mounting brackets using the supplied hardware (mounting bolt, washer, lock washers and nut) as shown.

NOTE: Placing a 2 x 4 or spacer under one side of the miter saw to raise the saw's mounting feet will make assembly easier.

- After the saw is mounted to the quick release mounting brackets make sure they are parallel to each other. Make sure the release levers are oriented as shown in Figure 6.

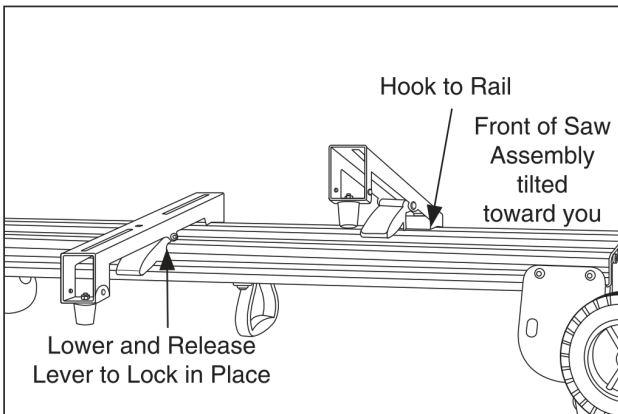
Figure 6



Refer to Figure 7

- Lift and slightly tilt the saw/mounting bracket assembly toward you and position it onto the miter saw stand. While depressing the release levers, hook the mounting bracket onto the rail, lower the assembly onto the stand and release the levers to lock the assembly in place. See Figure 7 (SAW IS NOT SHOWN TO ALLOW VISIBILITY OF THE RAILS AND BRACKETS) .

Figure 7



- NOTE:** The release levers will hook onto the rail and lock into place when released.
- Make sure the weight of the saw/mounting bracket assembly is evenly distributed. Adjust if needed.

To Remove the Miter Saw

- Depress the locking levers to unlock the saw/mounting bracket assembly, tilt the assembly toward you and lift the assembly away from the stand.

TRANSPORTATION

Refer to Figure 8

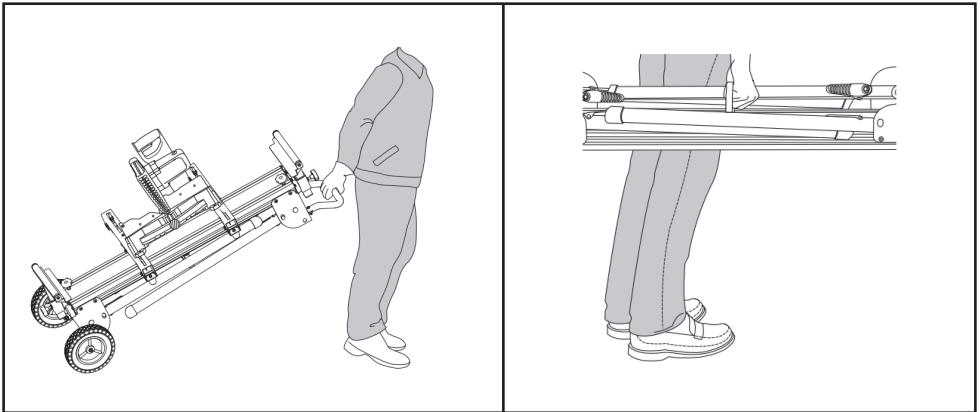


WARNING

Risk of unsafe operation. Ensure proper footing and use caution when rolling the miter saw stand to prevent tipping or loss of balance.

- Lift up on the end of the miter saw stand with wheels.
- While holding the stand with one hand, squeeze the release levers and fold up the two suspended legs. The legs will lock into place.
- Lower the stand until the wheels rest on a flat surface.
- Using the handle, tilt the other end of the miter saw stand up and transfer the weight to the wheels.
- Squeeze the release levers and fold up the remaining two legs. The legs will lock into place.
- Holding the handle, carefully lower the stand to the ground.
- To move the stand, use handle to lift and tilt the miter saw stand onto the wheels. Move miter saw stand as shown.

Figure 8



Miter Saw Stand						
1	Model	YH-MS042C	YH-MS050C3	YH-MS056B	YH-MS055F-1	YH-MS055-1
2	Load Limit	250kg	150kg	225kg	150kg	150kg
3	Package size	1177×560×190mm	970×280×160mm	1290×290×190mm	1205×638×158mm	1205×638×158mm
4	G.W.:	27.4kg	12.9kg	18.3kg	26.1kg	26.1kg
5	Max Length	2500mm	1985mm	2640mm	/	/
6	Min Length	1260mm	940mm	1120mm	/	/
7	Extended Arm	Yes	Yes	Yes	No	No
8	Adjustable Height	Yes	No	No	Yes	Yes
9	With power strip	No	No	No	Yes	No

Manufacturer: Jinhua Yahu Tools Co., Ltd.

Address: No.1333 Jinyuan Road, 321000 Jinhua City, Zhejiang Prov.

Importer: WAITCHX

Address: 250 bis boulevard Saint-Germain 75007 Paris

Importer: FREE MOOD LTD

Address: 2 Holywell Lane, London, England, EC2A 3ET

Made in China

VEVOR[®]

E-mail: CustomerService@vevor.com