

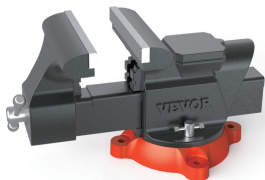
**VEVOR®**

**Bench Vice**  
**Operating Instruction**  
6inch Mechanic Bench Vise  
**Model: 9526**

**VEVOR®**

E-mail: [CustomerService@vevor.com](mailto:CustomerService@vevor.com)

**Model: 9526**



### NEED HELP? CONTACT US!

Have product questions? Need technical support?  
Please feel free to contact us:

✉ [CustomerService@vevor.com](mailto:CustomerService@vevor.com)

This is the original instruction, please read all manual instructions carefully before operating. VEVOR reserves a clear interpretation of our user manual. The appearance of the product shall be subject to the product you received. Please forgive us that we won't inform you again if there are any technology or software updates on our product.

### SPECIFICATIONS

Model :	9526
Designation :	6inch Mechanic Bench Vice
Material:	Ductile Iron
Overallsize:	365*151*189mm
Baking width:	151mm
Maximum opening:	150mm
Maximum clamping force:	20KN
Color:	Grey+Orange
Weight:	About 12.55kg

### DESCRIPTION

Solid Ductile iron  
Rotation table 360° rotation  
Suitable for installation on the table.

### PACKAGE

1 x Bench Vice Table Top Clamp Press  
1 x User Manual  
4 x Nuts  
4 x Screws  
1 x Base mount paperboard  
1 x Mat nylon clamp mouth pad

### APPLICATION

Bench vice is used to clamp workpieces. It is installed on the work stations to clamp the workpieces. It is an necessary tool in the schlosserei. Rotating disc type clamp body can revolve so that make the workpiece rotate to the suitable place. Most work of fitter are finished on the bench vice. For example, the saw, the file, the chisel and components in stalling and dismantling.

### INSTALLATION

#### Install the pliers on the clamp table

- Operating instruction  
The height of operator working will be suitable because the bench vice is installed on the work bench. Usually the jaw height is flushed with elbow just right. This is ok.  
Put the elbow on the bench vice peak and half clenched fists that the fist just support the mandible. Length and width of work bench will be decided by the work.
- Cautions
  - (1) Appropriate degree of tightness when clamp the workpiece. Just tight the hand shank by the hand only. Do not add strength with the help of other tools. No clamp-holding force shall be exceeded .
  - (2) When work strongly, you need try your best to make strength facing to clamp body.
  - (3) Do not knocking on the clamp body and smooth surface.
  - (4) Clean and lubricate the surface of lead screw and nut so that it will not rust.

Manufacturer:WEIFANG JINTAILAI BENCH VISE  
MANUFACTURING CO.,LTD  
Address:TA ER BAO INDUSTRIAL PARK,CHANGYI CITY,  
SHANDONG,CHINA

Importer: WAITCHX  
Address: 250 bis boulevard Saint-Germain 75007 Paris  
Importer: FREE MOOD LTD  
Address: 2 Holywell Lane, London, England, EC2A 3ET

EC	REP	EUREP GmbH Unterlettenweg 1a, 85051 Ingolstadt, Germany
UK	REP	EUREP UK LTD UNIT 2264, 100 OCK STREET, ABINGDON OXFORDSHIRE ENGLAND OX14 5DH

Made in china