



**HIGH PRESSURE
AIRLESS SPRAYER MANUAL**

VEVOR®

HIGH PRESSURE AIRLESS SPRAYER MANUAL



NEED HELP? CONTACT US!

Have product questions? Need technical support? Please feel free to contact us:

CustomerService@vevor.com

This is the original instruction, please read all manual instructions carefully before operating. VEVOR reserves clear interpretation of our user manual. The appearance of the product shall be subject to the product you received. Please forgive us that we won't inform you again if there is any technology or software updates on our product.

WARNING

The following are the instructions for setting up, using, grounding, maintenance and repair of the equipment. Please read it carefully.

FIRE AND EXPLOSION HAZARDS



Solvents, paint fumes and other flammable fumes may ignite or explode in the working area.

To help prevent fire and explosion:

- In a well ventilated area using only this device.
- Eliminate all ignition sources such as pilot lights, cigarettes, portable electric lamps and plastic drop cloths (potential static arc).
- Spraying opportunity spark. When the sprayer flammable liquids or flammable liquids or flammable liquids in the vicinity When the body is flushing or cleaning, keep sprayer at least 20 feet away from explosive vapors (6m).
- Keep work area free of solvent, debris, gasoline and other debris.
- Do not plug or unplug power cords or turn lights when flammable fumes are present.
- The work area equipment and conductive objects. Read Grounding instructions.
- If electrostatic discharge or electric shock occurs, stop the operation immediately. Do not use the device until the problem has been identified and resolved.
- Keep a fire extinguisher in the work area.

SHOCK HAZARD



Improper grounding system is provided incorrect or improper use can cause electric shock.

- Before servicing equipment, turn off the power and disconnect the power cord.
- Use only grounded electrical outlets.
- Use only three-core extension cords.
- Ensure ground sprayer and extension cords prongs are intact.
- Do not expose to rain. To be stored indoors.

SKIN INJECTION HAZARD



High-pressure fluid emitted from the gun, hose leak, and ruptured components can pierce skin. Although the wound looks like a "freshly cut mouth," it is a serious injury that can lead to amputation in severe cases. If such a wound is found, surgery should be performed immediately.

- Do not point a gun at anyone or any part of your body.
- Do not place your hand on the nozzle.
- Do not use hands, body, gloves or rags to block or stop leaks.
- Pull the trigger lock when not spraying.
- Follow the pressure relief procedure in this manual before stopping spraying, cleaning, inspecting, or repairing equipment.

DANGEROUS HIGH-VOLTAGE ALUMINUM PARTS



Do not use 1,1,1-trichloroethane, methylene chloride in pressurized aluminum equipment, and other halogenated hydrocarbon solvents or fluid contained these solvents. Doing so can cause serious chemical reaction and equipment rupture, and result in serious personal injury or death and property damage.

DANGER OF LIQUID OR SMOKE POISONING



Serious injury or death can result if toxic gases, liquids are inhaled or splashed on the eyes or skin. Read the Material Safety Data Sheet (MSDS) to familiarize yourself with the specific hazards of liquids. Store hazardous liquids in approved containers and dispose of them as required by relevant regulations.

PERSONAL PROTECTIVE EQUIPMENT



Proper protective equipment must be worn when operating or repairing equipment or in the area where the equipment is operated to prevent serious injury (including eye injury), inhalation of toxic gases, burns, and hearing loss. These items include, but are not limited to:

- Goggles
- Protective clothing and respiratory protective gloves recommended by liquid and solvent manufacturers
- Hearing Protection

FLUID COATINGS THAT CAN BE SPRAYED

This small paint sprayer is not suitable for coatings containing impurities or fibers with poor fluidity.

Common applicable coatings that can be used for this small paint sprayer: latex paint, common paint paint, waterborne waterproof paint, ultra-thin fireproof coating, thin anti-corrosion coating, sand-free hydration of cement, thin epoxy floor paint, etc.

Common inapplicable coatings that can not be used for this small paint sprayer: putty powder, natural stone coating, glue, oily waterproof coating, thick preservative coating and so on.

Some of the coatings can be sprayed directly. The coatings with high viscosity need to be diluted with water or thinner.

For specific usage of fluid materials, please refer to the instructions for the use of fluid materials.

THE POWER FORM OF THE MACHINE IS PURE ELECTRIC, WHICH CAN BE PLUGGED IN. WHAT KIND OF OIL CAN BE ADDED TO THE FILLING PORT

Any lubricating oil that can lubricate the parts of mechanical equipment is fine.

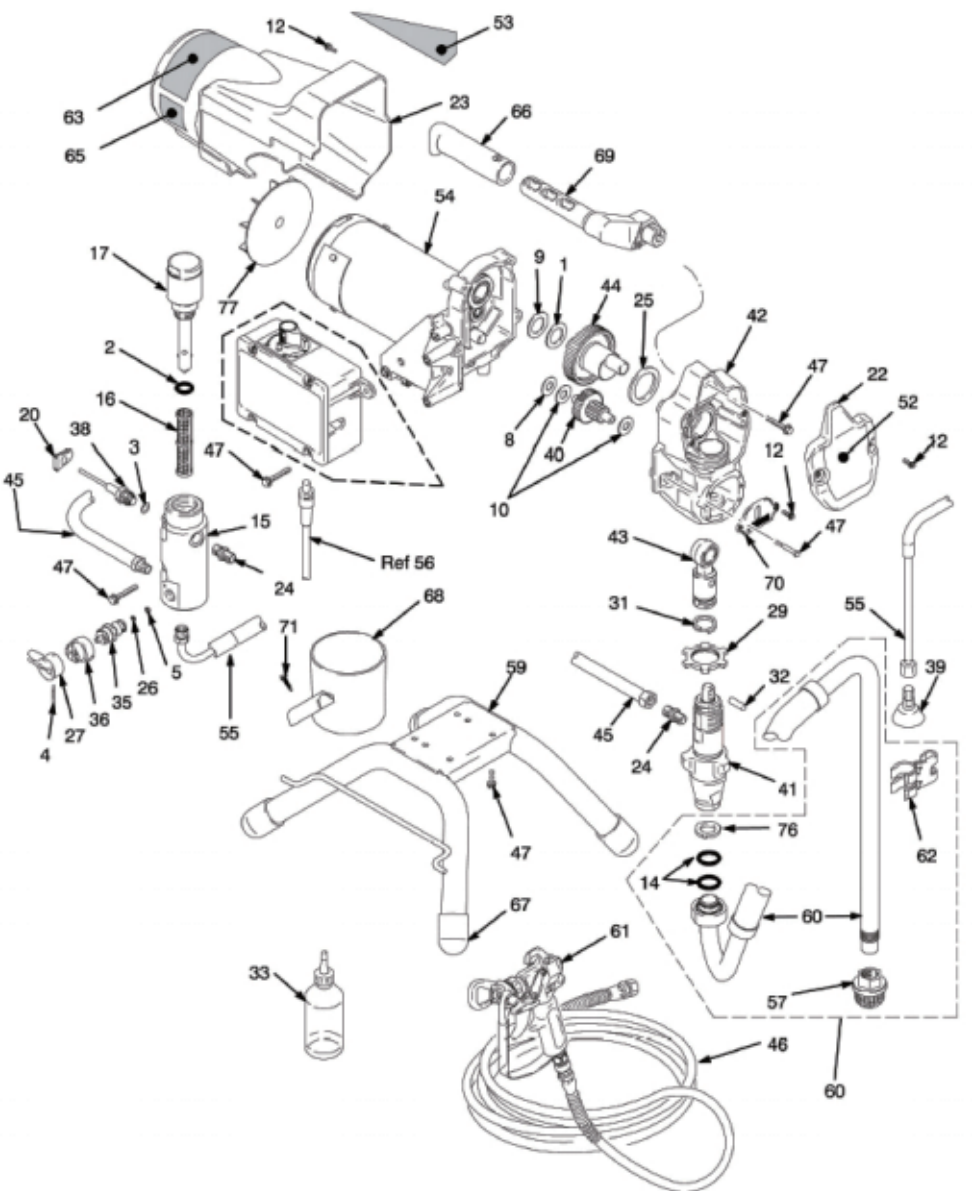
WHEN TO ADD LUBRICANT AND HOW MUCH OIL NEEDS TO BE ADDED

Add 10ml of the lubricating oil to the filling port before each use of the machine, which can prolong the service life of the suction pump.

BEFORE TRIGGER THE SPRAYING GUN, THE NOZZLE SEAT AND NOZZLE MUST BE INSTALLED WELL

Many users trigger the gun with nozzle seat and nozzle uninstalled, which is not recommended. This will cause a sharp increase in the speed of the motor, cause the air switch to trip, and increase the probability of damage to the electronic components of the machine.

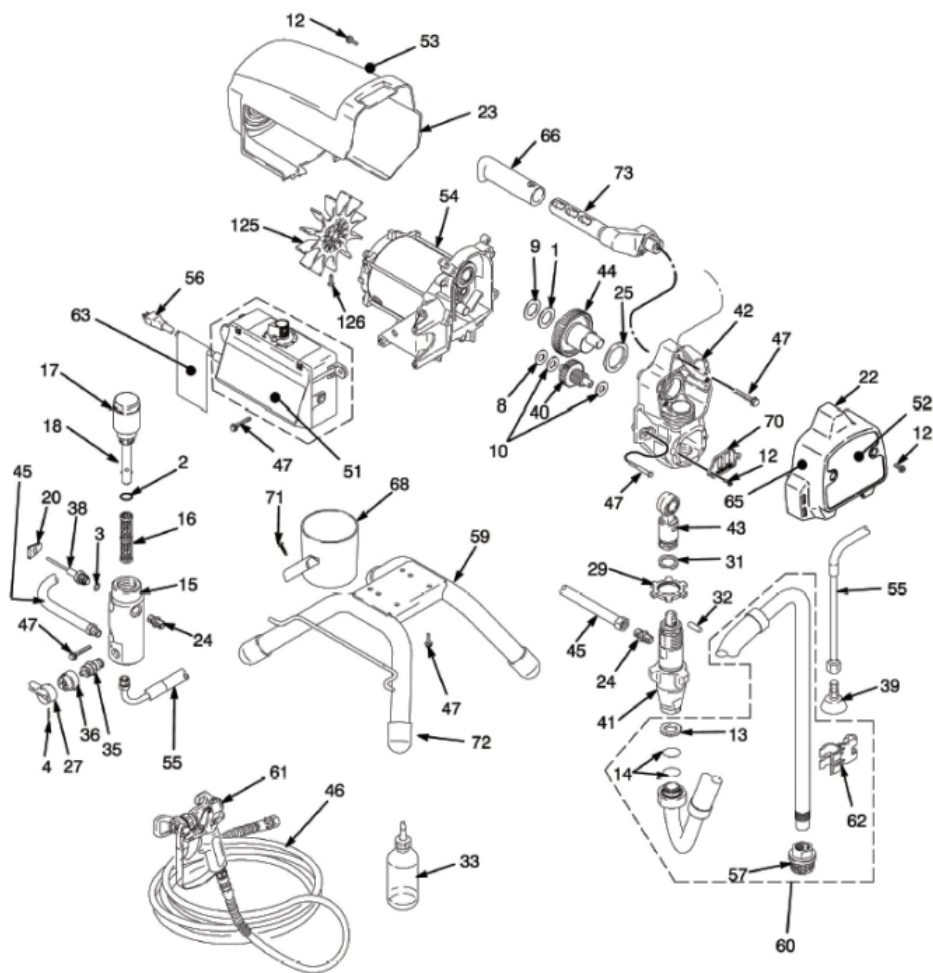
SPRAYER - PART 1



SPRAYER - PARTS LIST 1

No.	Product name	Quantity	No.	Product name	Quantity
1	Gasket	1	45	Hose	1
2	Gasket	1	46	High pressure hose	1
3	Gasket	1	47	SHCS	11
4	Pin	1	52	Front label	1
5	Gasket	1	53	Side tag	1
8	Gasket	1	54	220V motors	1
9	Gasket	1	55	Return pipe	1
10	Gasket	2	57	Filter	1
12	SHCS	6	59	Chassis	1
14	O-ring	2	60	Suction hose	1
15	Aluminum filter rod	1	61	Lance	1
16	Liquid filters, 60 mesh	1	62	Drain clamp	1
17	Rod Cover	1	66	Handle	1
20	Transducer	1	67	Pouches	4
22	The front cover	1	68	Suction / discharge Cup	1
23	Motor protection cover	1	69	Handle	1
24	On the wire	2	70	Blanks	1
25	Gasket	1	71	SHCS	1
26	Seat valve	1	76	Gasket	1
27	Valve wrench	1	77	Fan	1
29	Flower-nuts	1			
31	Fixed spring	1			
32	Pin	1			
33	Lecythus	1			
35	Return valve	1			
36	Base valve	1			
38	Pressure Sensor	1			
39	Thread deflector	1			
40	Gear reducer	1			
41	Takeover	1			
42	Drive housing	1			
43	Connecting rod	1			
44	Gear, crankshaft	1			

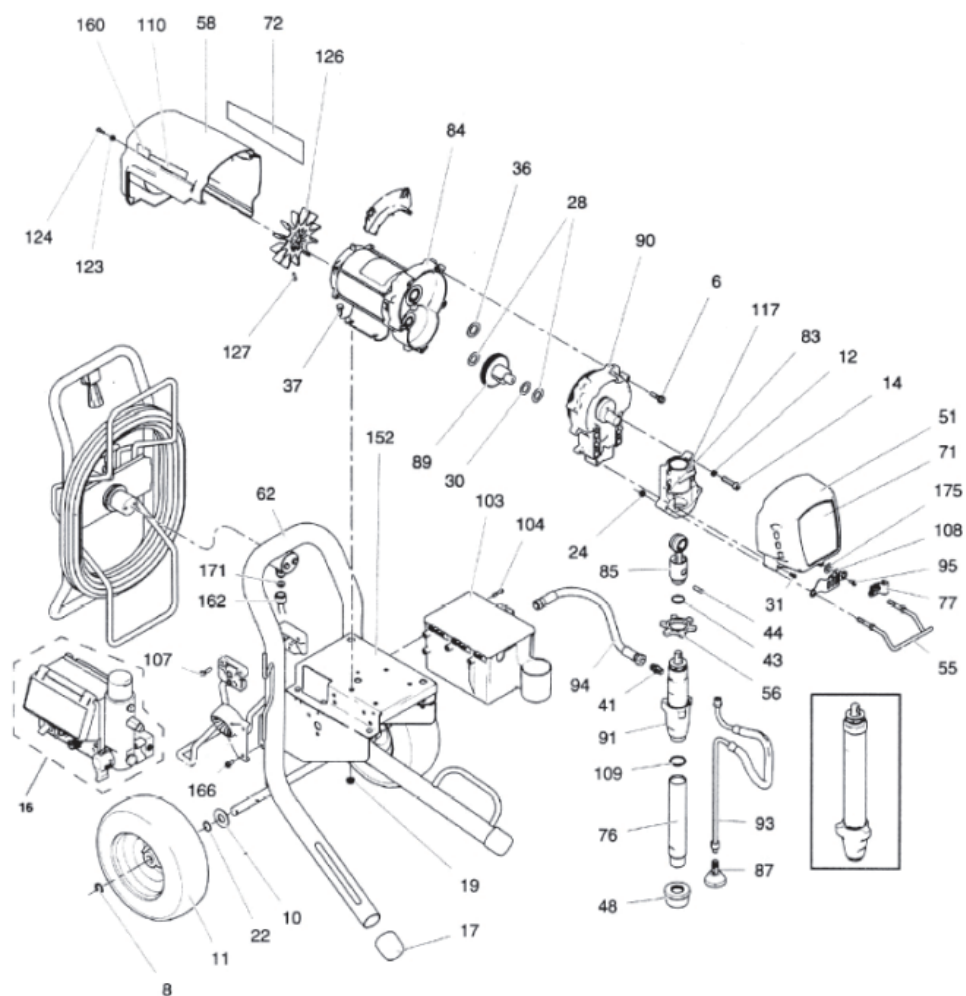
SPRAYER - PART2



SPRAYER - PARTS LIST 2

No.	Product name	Quantity	No.	Product name	Quantity
1	Gasket	1	44	Gear, crankshaft	1
2	Gasket	1	45	Hose	1
3	Gasket	1	46	High pressure hose	1
4	Pin	1	47	SHCS	13
8	Gasket	1	51	Label	1
9	Gasket	1	52	Front label	1
10	Gasket	2	53	Side tag	1
12	SHCS	8	54	220V motors	1
13	Spacer ring	1	55	Return pipe	1
14	O-ring	2	56	Power cable	1
15	Aluminum filter rod	1	57	Filter	1
16	Liquid filters, 60 mesh	1	59	Support	1
17	Rod Cover	1	60	Suction hose	1
18	ilter	1	61	Spray gun	1
20	Transducer	1	62	Drain clamp	4
22	The front cover	1	66	Handle	1
23	Motor protection cover	1	68	Suction / discharge Cup	1
24	On the wire	2	70	Blanks	1
25	Bearings, thrust	1	71	SHCS	1
27	Valve wrench	1	72	Pouches	4
29	Flower-nuts	1	73	Handle	1
31	Fixed spring	1	125	Fan	1
32	Pin	1	126	Screw	1
33	Lecythus	1			
35	Valve, drain	1			
36	Base valve	1			
38	Pressure Sensor	1			
39	Thread deflector	1			
40	Gear reducer	1			
41	Takeover	1			
42	Drive housing	1			
43	Connecting rod	1			
		1			

SPRAYER - PART 3

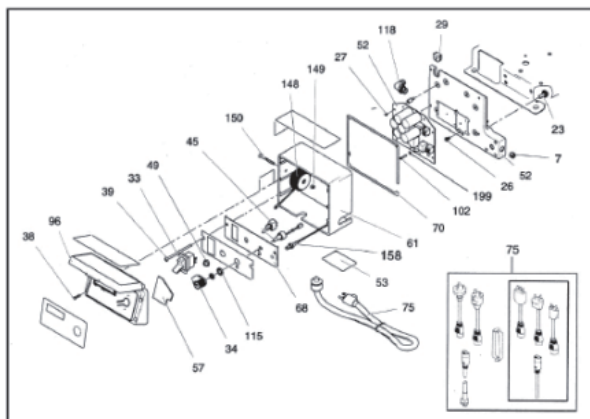


SPRAYER - PARTS LIST3

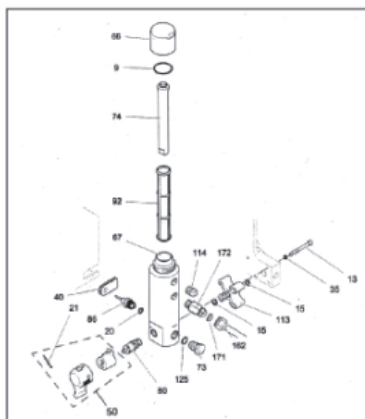
No.	Product name	Quantity	No.	Product name	Quantity
6	SHCS	5	87	Thread deflector	1
8	Clip, protect	2	89	Gear combination	1
10	Spacer ring	2	90	Drive housing	1
11	Tire	2	90a	Spacer ring	1
12	Washers, lock	4	91	Lower Pump	1
14	Screw caps	4	93	Drain hose	1
17	Pouches	2	94	Takeover	1
19	Hex nuts, flange head	8	95	SHCS	1
22	Washers, wave spring	2	103	Toolbox	1
24	Nuts, locking	2	104	SHCS	3
28	Spacer ring	2	107	SHCS	4
30	Spacer ring	1	108	Blanks	1
31	SHCS	4	109	O-ring	1
36	Spacer ring	1	123	Metal cover	2
37	Hex Nuts	4	124	Screw	2
41	On the wire	1	126	Fan	1
43	Fixed spring	1	127	Torx screws	1
44	Live Saixiao child	1	152	Frame, assembly	1
48	Filter	1	162	Tube	1
51	The front cover	1	166	SHCS	2
55	Shelf	1	171	Seal, Accessories	2
56	Fixing nut	1	175	Spacer ring	1
58	Motor protection cover	1			
62	Chassis	1			
76	Intake pipe	1			
77	Drain lines	1			
83	Bearing housing	1			
84	Motor	1			
85	Connecting rod	1			

SPRAYER - PART 4

4-1



4-2



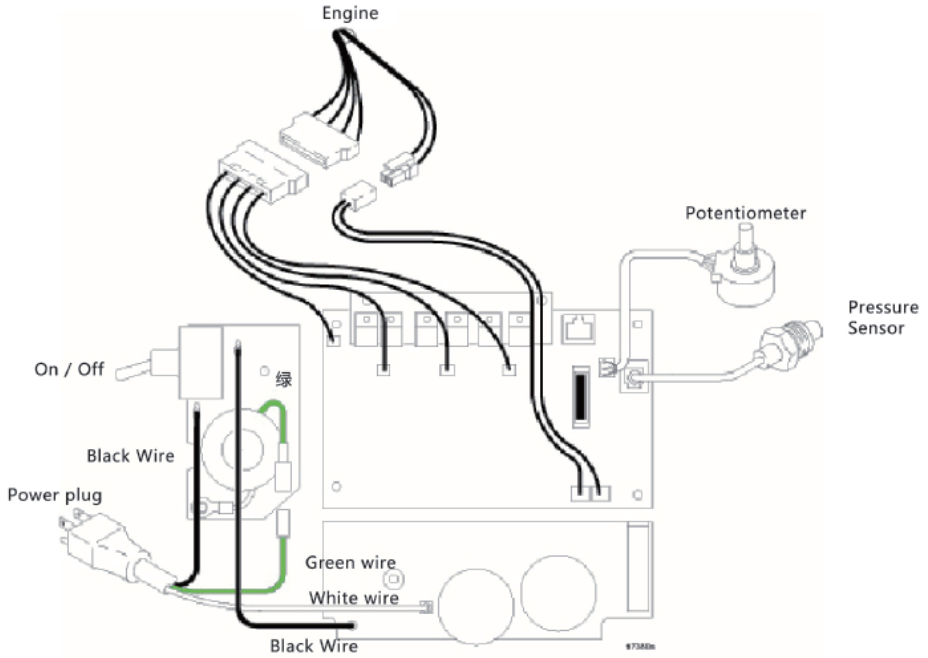
SPRAYER - PARTS LIST4

4-1

No.	Product name	Quantity	No.	Product name	Quantity
7	Plugs, pipe	1	96	Controller Cover	1
23	Nuts, flange head	2	102	Screws, diode	1
26	Screw	1	115	Gasket	1
27	Screw	1	118	Fitting	1
29	Grommet, motor lead	1	148	Coil	1
32	Screw	3		Including nuts and bolts	
33	Switch	1	149	Lock nut	1
34	Knobs, potentiometers	1	150	Screw	1
38	Screw	4	158	Switch	1
39	Screw	4	199	Spacer ring	2
45	Switch	1			
49	Boots switch	1			
52	Control panel	1			
53	Labels, transparencies	2			
57	PAD, foam	1			
61	Control box	1			
68	Control panel	1			
70	Control box gasket	1			
75	Power cable	1			

4-2

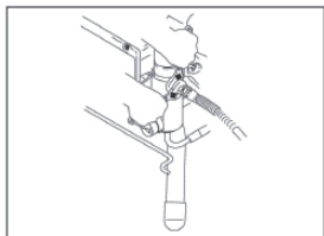
No.	Product name	Quantity
9	O-ring seal	1
13	Saew cap, socket head	3
15	Square Ring	2
20	O-ring seal	2
21	Pin	1
35	Washers, lock spring	3
40	Transducer	1
50	Handle sets	1
66	Filter cap	1
67	Filter	1
73	Plugs, self-deaning	1
74	Filter tube	1
80	Metal valve	1
86	Pressure Sensor	1
92	Liquid Filter	1
	30 mesh	
	60 mesh Original Equipment	
	100 mesh	
	200 mesh	1
113	Manifold	1
114	Plugs, pipe	1
125	Oil seals gaskets	1
162	Tube	1
171	Seal, Accessories	2
172	Joints, 45 degree elbow	1



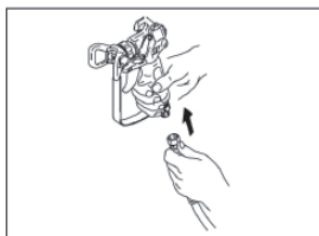
Technical Parameters

Model	Power Supply	Power	Flow	Pressure	Weight
395/390	220V	2200W	2.5L	3000PSI	22KG
490/495/590	220V	2500W	2.5L	3000PSI	25KG
595/690	220V	2800W	3.0L	3000PSI	28KG
795/790	220V	3200W	4.0L	3000PSI	40KG
1095/890	220V	3800W	5.0L	3000PSI	45KG

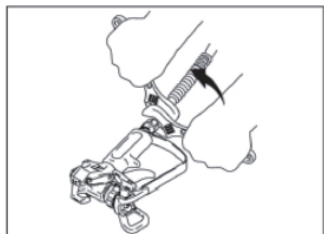
SETTING STEP



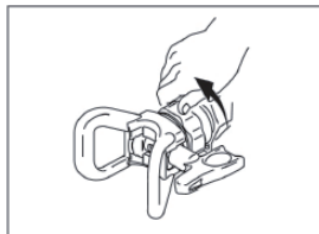
1、 There will be no gas hose to the sprayer, Tighten securely.



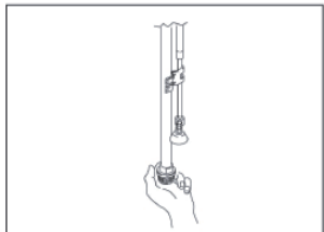
2、 The other end of the hose to the gun.



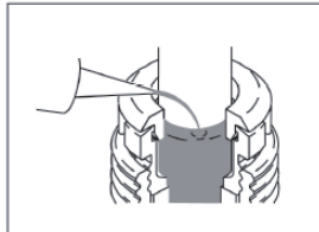
3、 Tighten



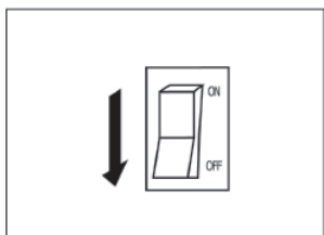
4、 Remove tip guard



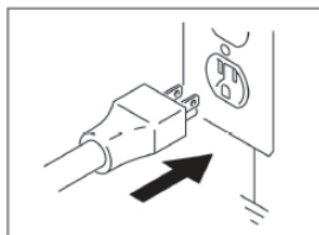
5、 Check inlet strainer for obstructions and dirt.



6、 To the throat packing nuts with throat seal liquid to prevent premature seal wear, have to do every time you spray.



7、 Turn off the power



8、 Plug the power cord into a properly grounded electrical outlet.

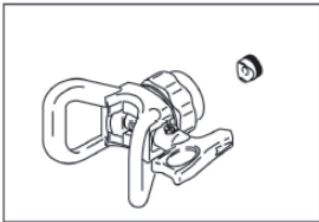


9、 The filler valve downward rotation.

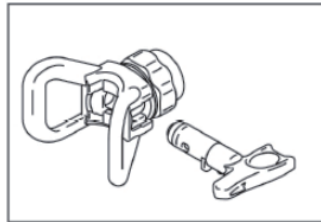


10、 The siphon tube set into the inner fluid filled with grounded metal pail. Pull to the wire with the bucket connected to a true earth ground. The oil is stored in sprayer washed away. Rinse water-based paint, oil paint and storage oil rinse with mineral spirits.

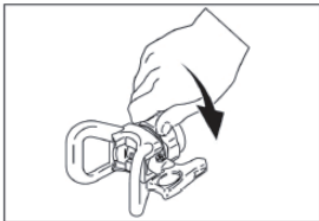
Nozzle and shroud



1、 The pressure to the lowest pressure

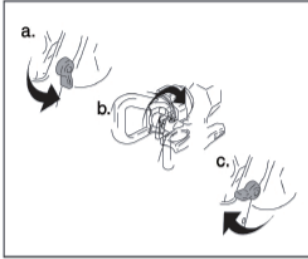


2、 Power

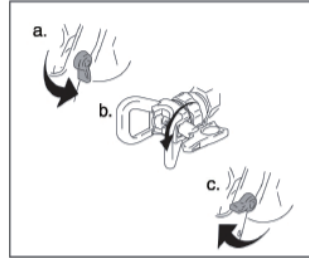


3、 The rotary assembly to tighten the gun

CLEAR BLOCKAGE

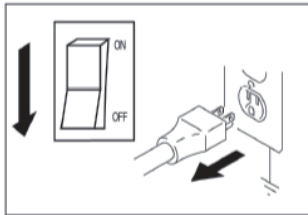


- 1、 a.) the release of the trigger, put safety.
 - b.) the spinning nozzle.
 - c.) Open the safety pin.
 - d.) Trigger gun to clear the clog.
- Never point gun at your hand or a rag!

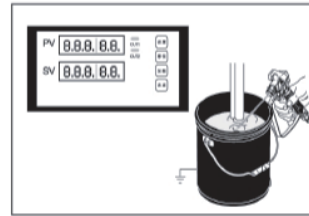


- 2、 a.) lock safety pin.
- b.) is rotated to the original position.
- c.) to open the safety pin, and then continue spraying.

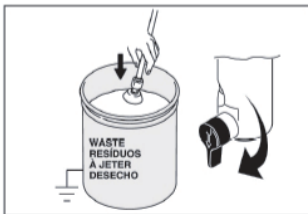
CLEANING



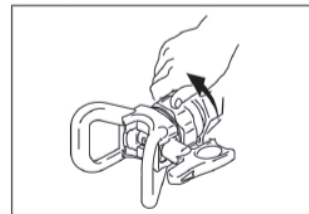
- 1、 Turn off the power and unplug the power cord sprayer.



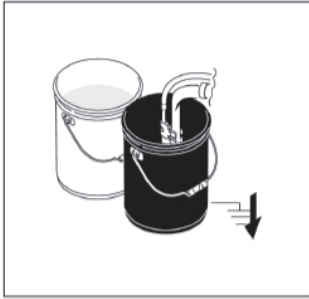
- 2、 The pressure to lowest setting. Trigger spray seizure to relieve pressure.



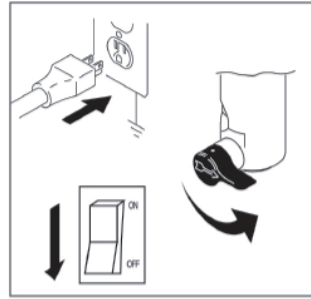
- 3、 Drain hose into the bucket. The filler valve downward rotation.



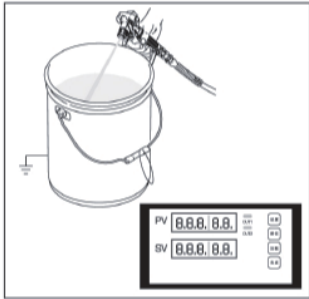
- 4、 Remove the cover and nozzle



5、 The siphon tube set from paint and place in flushing fluid. Water and water-based paint, oil paint with mineral spirits.



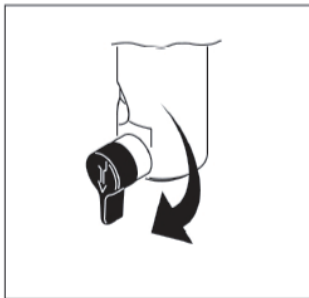
6、 Plug sprayer power cord. Power. The filler valve rotated to a horizontal position.



7、 Hold gun against paint pail. Trigger safety pin. Trigger gun and increase pressure until flushing fluid.



8、 Move gun to flushing pail, hold gun against pail, trigger gun to thoroughly flush system. Release trigger and lock trigger safety.



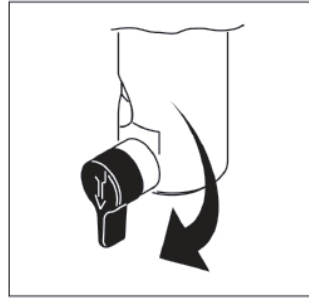
9、 The filler valve is rotated downward and then let flushing fluid to circulate 1-2 minutes to clean drain tube.



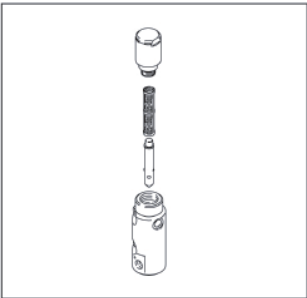
10、 The suction pipe raised above flushing fluid and run sprayer for 15 to 30 seconds to drain fluid. Turn off the power.



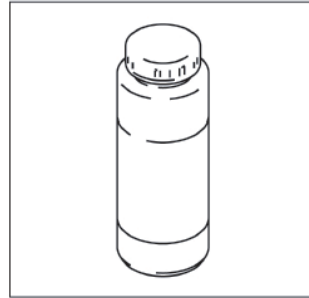
11、 Close relief valve. Flushing pail gun trigger to discharge fluid hose.



12、 Open filler valve



13、 If equipped with a filter on the gun and sprayer, then remove them. Clean and inspect.



14、 If it is washed wrth water, re-wash again with mineral spirits to leave a protective coating to prevent freezing or corrosion.



15、 With a soak in water or mineral spirits rags Wipe sprayer, hose and gun.

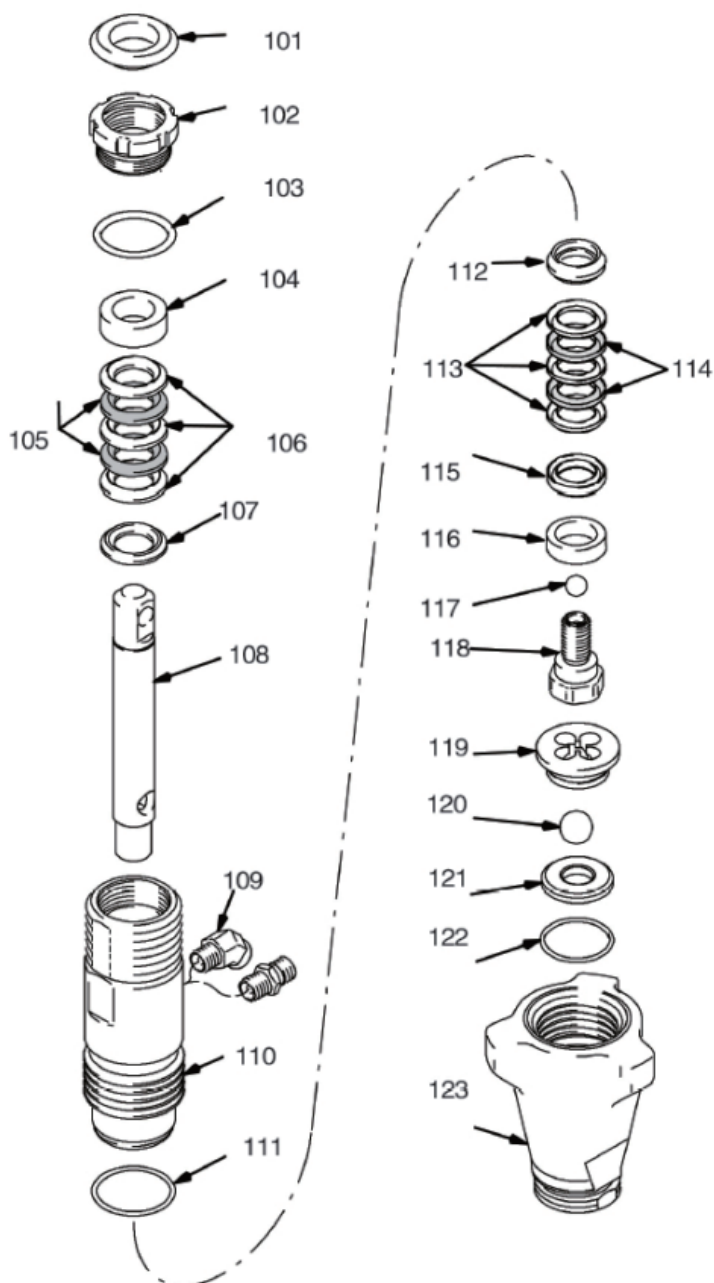


Troubleshooting

Problem	Reason	Solve
A.Sprayer not start	1.The sprayer is not powered 2.Brush has come to life 3.When the case is still in with a pressure sprayer is switched off 4.undervoltage 5.The extension cord is damaged or the power is too low 6.Spray the cabinet flow protection operation 7.The motor has a problem	1.power 2.Replace brushes 3.The pressure is adjusted to the highest position or return valve rotation to the return site 4.Test the power supply voltage, to ensure a stable voltage 5.Replace the drag strip 6.Please reset the protector after troubleshooting 7.Take the device to the agency maintenance
B.Spray function starts, when the switch is set to reflux reflux can not blowdown	1.Unable to reflux 2.The paint bucket is empty or the suction tube Not completely immersed in the paint 3.The suction tube blockage The suction tube and suction valve junction unsealed 5.The inlet valve or outlet valve stuck 6.The intake valve wear or damage 7.return valve blockage	1.Try to look again at reflux. 2.Load the paint bucket or suction tube is fully immersed in the paint 3.Clean the suction tube 4.Clean the pipe connections, and the solid 5.Clean the inlet, outlet valve or replace worn parts 6.Replace the intake valve 7.Take the device to the agency maintenance.
C.The rapid decline in spraying lance opening pressure	1.nozzle wear serious 2.Suction filter clogging 3.Paint or paint too viscous The discharge valve is not clean or wear 5. The intake valve is damaged or worn	1.Replace the nozzle 2.Clean intake filter 3.The diluted paint or coating 4.Clean or replace the outlet valve 5.Replace the intake valve

D.When the switch is refluxed for spraying liquid from the return conduit flows.	1.Reflux valve is not clean or wear	1. Take the device to the agent for repair or renewal return valve
E.Spray leak	1.Gun internal parts are not clean or wear	1. Take the device to the agency maintenance
F.Nozzle seat leakage	1. nozzle seat improper assembly parts 2 The seal wear	1.Check the nozzle seat is fitted properly 2.Replace the seals
G.Absolutely can not stand the pressure spray or Normal force, shot instantaneous pressure reduction Small enough traffic	1.nozzle or filter is clogged 2.The cleaning nozzle in reverse position 3.clogged suction port	1.Clean the nozzles or cartridge 2.Place the nozzle in spray position 3.Clean dirty dirt
H.Paint unevenly distributed	1.Set the spray pressure is too low 2.guns, nozzles, filters blocked 3.The suction tube and suction valve junction unsealed 4.nozzle wear 5.The paint is too thick 6.Pressure leak	1.Increase spray pressure 2.Clean the filter 3.Strengthening the suction tube 4.Replace the nozzle 5.diluted paint or coating 6.View Solution C
I.Sprayer lack of motivation, low pressure	1.The pressure is set too low 2.The power supply voltage is low	1.Adjust the pressure control knob clockwise to increase pressure setting 2.Select high-quality power access port work

ACCESSORIES CODING



NO.	NAME		
101	Guide sleeve		
102	fasten the screw nut		
103	O-ring		
104	Positioning sleeve		
105	Leather seal		
106	UPE seals		
107	Positioning sleeve		
108	Plunger rod		
109	On the wire connector		
110	Steel sleeve		
111	O-ring		
112	Positioning sleeve		
113	UPE seals		
114	Leather seal		
115	Positioning sleeve		
116	Under the scraper		
117	Small ball		
118	Steel ball seat		
119	Positioning flower blue		
120	Big ball		
121	Big ball seat		
122	O-ring		
123	Under the steel body		

VEVOR®

E-mail: CustomerService@vevor.com