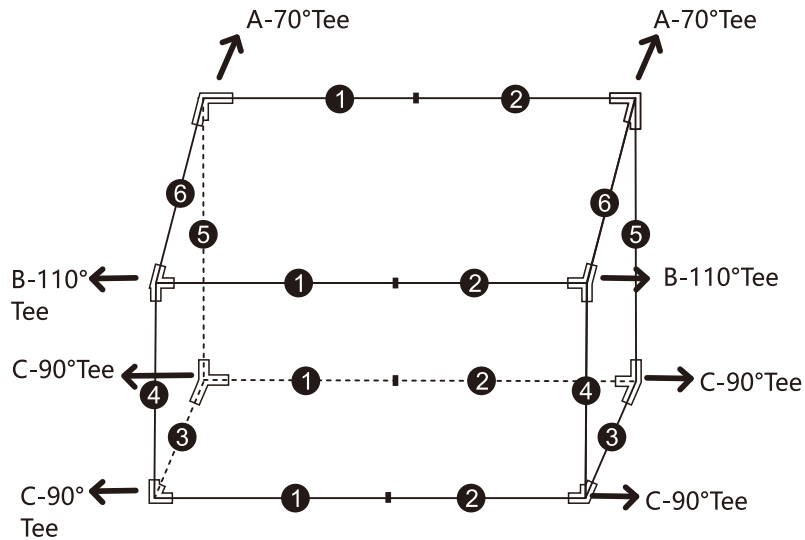


Storage Box Assembly Instructions

Structure diagram

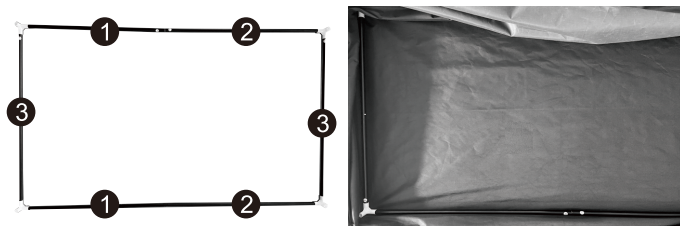


Product drawing

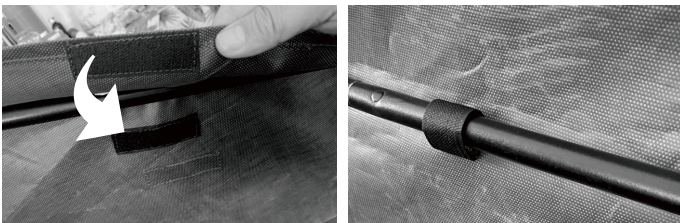


Assembly steps

1. Put the 1, 2 and 3 metal pipes into the bottom of the cloth sleeve after assembly according to the legend



3. Tighten the cloth cover and paste the Velcro



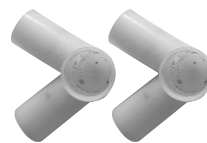
2. Assemble other metal pipes in turn



Parts list



Metal tube ①x4 ②x4 ③x2 ④x2 ⑤x2 ⑥x2



A-70°Tee×2



B-110°Tee×2



Cloth coverx1



C-90°Tee×4