

VEVOR®

HOT STAMPING MACHINE INSTRUCTIONS



www.vevor.com

Contact: service@vevor.com

Call us:

(+626) 275-4507 (For USA)

(+44) 1173182739 (For Europe)

(+001) 626 275-4507

(For Other Countries)

Working Time:

Mon-Fri 8:00 am to 5:00 pm

structure representation and function introduction



Bronzing machine parameters

| | |
|---|--|
| <p>MOCHA 63MM BASSWOOD</p> <p>≈100°C ≈1秒 (S)</p> | <p>BIG BIRD BIG BIRD</p> <p>≈300°C ≈3秒 (S)</p> |
| <p>小罐茶 XIAO GUAN TEA</p> <p>≈100°C ≈1秒 (S)</p> | <p>≈180°C ≈3秒 (S)</p> |
| <p>HP-015</p> <p>≈100°C ≈1秒 (S)</p> | <p>PAB</p> <p>≈250°C ≈3秒 (S)</p> |
| <p>手工黑糖</p> <p>≈320°C ≈3秒 (S)</p> | <p>WenTong Embossment</p> <p>≈350°C ≈3秒 (S)</p> |

Digital display temperature control setting

1. Open the power switch
2. Press SET button SET temperature
3. Press the < key temperature selected ones digit
4. Press > adjust temperature values



- ★ PV real time temperature (red number)
- ★ SV set temperature (green number)

Machine height adjustment

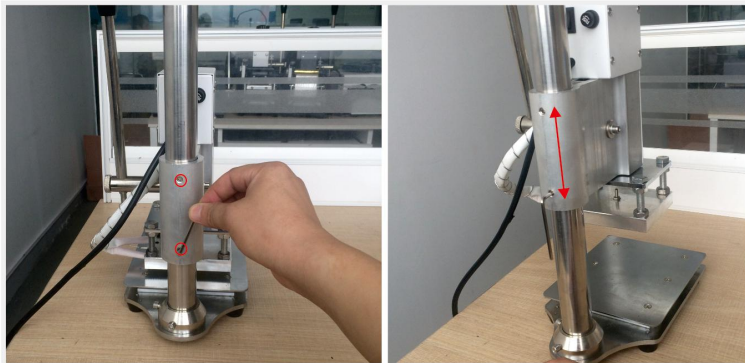


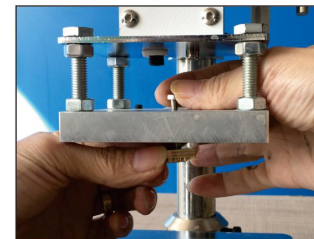
Figure 1

Figure 2

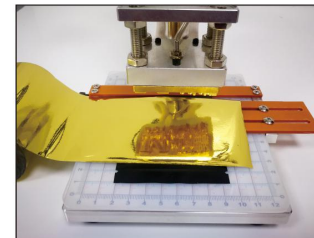
After loosening the machine arm shaft can
 Feel free to move up and down to find a good position
 You think it is ok.
 (usually keep the distance is 3cm with the imprint material)



- Connect the 110/220V power, prepare the mould + stick the mould glue + hot stamp paper and hot stamping materials, positioning according to the shape of the product.



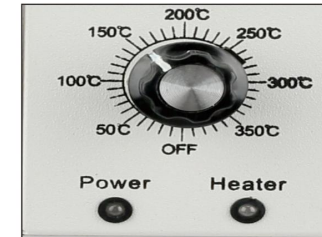
- screw mold installation: first copper mould go across the middle bits of the hot plate, it can be fixed with the screw caps



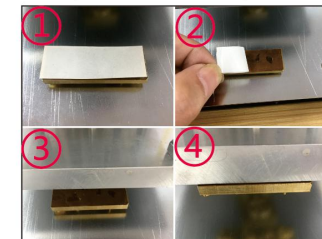
- if you need to bronzing, put the hot stamping paper to the place of the material needed. choose a variety of color bronzing paper according to clients request.



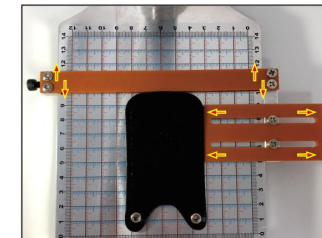
- Leather hot stamping effect



- Adjust knob set temperature, green light said is heating, red light means the temperature reach that we set, automatic constant temperature



- High-temperature adhesive installation: cut the high-temperature adhesive to the mark, close to the mark of the light, the machine to open equal temperature up to 100 Degree, the mark and high temperature glue stickers Preheat, so that high temperature glue sticky, in the tear white paper, to find the correct position can.



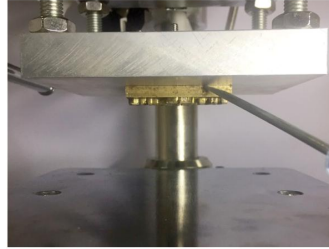
- Positioning fixture, 90 degree angle fixture positioned on the worktable, the upper dial can move up and down. The right dial can move left and right to make the products needed to be stamped reach the ideal position. (Need to buy independently)



- Wood imprinting effect
 Note: This machine can not guarantee all wood can Hot stamping, with varnish or oil paint wood can not be used for hot stamping.



●Paper hot stamping effect



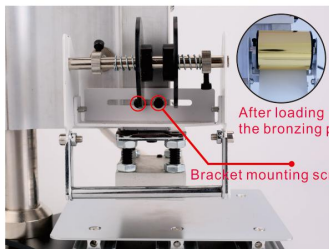
●Adjust the temperature about 300 degree, Take down the mould with screwdriver,as the picture show.



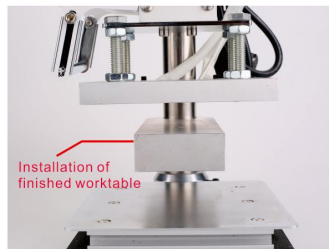
●Hot stamping plate balance adjustment: first loosen the screws in reverse direction with the wrench, when the screw adjustment in clockwise direction, hot stamping plate is up, otherwise is down.



●Stroke control fixed ring: fixed Stroke in order to control the depth of hot stamping.(Digital specific)



●Installation drawing of bronzing bracket



●Finished work table installation drawing

Instructions

First, installation:

- 1.install handle lever: take out the handle lever, insert the handle rod into the installation hole.Tighten the screw beside the handle lever to fasten the lever.
- 2.adjust height:The machines have already adjust the height less than 1cm thickness when leave the factory.usually The height adjust about 20mm position is more appropriate, if special condition, need to adjust , please operate according to the following steps:loosen the transom fastening screws, rotate the height of the handle lever, after adjustment, locking transom fastening screws. When adjust the height should notice the balance of the plate surface. parallel the heat transfer surface and working plate.When fasten the screw should be step by step,not by one time.otherwise it is difficult to make the work surface and the heat transfer surface in parallel, to finish the ideal hot stamping effect.
- 3.plug hot stamping machine in DC power supply, open the power switch, rotating the temperature control knob to set the temperature to 150 degree.
4. Cut off the high temperature glue that size similar to the mould , stick it to the backside of the mould ,then put it to the middle of the hot stamping plate.Press the lever with hand make them sticky together,then take out the mould,tear off the protective paper of the high temperature glue.face up the glue into the working plate,try to put it in the heat transfer plate center press the machine handle lever by hand to heat it,make the conduction copper stick to the heat transfer plate completely.
- 5.put the hot stamping goods under the mould, adjust the position,make the surface that need to hot stamping up, to the position that need to hot stamp.
- 6.press the plug into the DC power, open the power switch, red power indicator light, rotating temperature adjustment knob,According to the different material and printing goods set temperature required,the following simple table for your reference:Celsius temperature of 100 DEG -150 DEG150 -180 DEG C hot stamping paper / leather name card PVC card // PVC soft leather Rubber / temperature indicator light is red, more than 10 minutes becoming green, said heat transfer plate has reached the required Temperature. (because it is the automatic constant temperature control, in hot stamping process, The Signal light color will often change, but it will not affect the hot Printing effect)
- 7.when the temperature indicator light turns green, press the lever to make the conduction copper and hot stamping goods be closely. Different materials, the required temperature is different, if the temperature is high, the line edge coloring will cross to fuzzy, if temperature is low,will be inhomogeneous, please Make adjustments according to the print effect.
- 8.pressure and hot stamping time: the printed image is too deep, the surface pressure is too large, the image is too shallow and incomplete, the surface pressure is too small.Imprint time is too long, hot stamping and coloring will be cross-border to fuzzy; imprint time is too short, will be inhomogeneous. Hot stamping surface is smooth, need to Small pressure and shorter stamping time, printing surface is rough, need more pressure and longer stamping time.
- 9.according to imprint height adjust height ,limited nut to limit the imprint height, avoid big pressure when pulling the handle, literal and heat transfer surface of the plate and the imprint surface will collide and damage.