



Technical Support and E-Warranty Certificate www.vevor.com/support

Compressed Air Filter Regulator

User Manual

We continue to be committed to provide you tools with competitive price.

"Save Half", "Half Price" or any other similar expressions used by us only represents an estimate of savings you might benefit from buying certain tools with us compared to the major top brands and does not necessarily mean to cover all categories of tools offered by us. You are kindly reminded to verify carefully when you are placing an order with us if you are actually saving half in comparison with the top major brands.



NEED HELP? CONTACT US!

Have product questions? Need technical support? Please feel free to contact us:



CustomerService@vevor.com

This is the original instruction, please read all manual instructions carefully before operating. VEVOR reserves a clear interpretation of our user manual. The appearance of the product shall be subject to the product you received. Please forgive us that we won't inform you again if there are any technology or software updates on our product.

Technical Specifications

Model	N. W.	G. W.	Carton Size
AW4000-04	2.6LBS (1.2Kg)	3.3LBS (1.5Kg)	11.6*6.1*3.9 inch (295*155*100 mm)

Port Size	Max Inlet Pressure	Filter Rating	Air Flow
1/2 " NPT	145 psi	5µm	≥141SCFM@90PSI

SAFETY



Note / Remark.



Caution / Warning.



Read the instruction manual.



Read this material before using this product. Failure to do so can result in serious injury. Save This Manual.



Assembly precautions

1. Assemble only according to these instructions. Improper assembly can create hazards.
2. Wear ANSI-approved safety goggles and heavy-duty work gloves during assembly.
3. Keep assembly area clean and well lit.
4. Keep bystanders out of the area during assembly.
5. Do not assemble when tired or when under the influence of alcohol, drugs or medication.
6. Weight capacity and other product capabilities apply to properly and completely assembled product only.
7. Assemble on a flat, level, hard and smooth surface capable of safely supporting Compressed Air Filter Regulator



Use precautions

TO PREVENT SERIOUS INJURY AND DEATH FROM TIPPING:

1. DO not sit, stand on this Compressed Air Filter Regulator.
2. This product is not a toy. Do not allow children to play with or near this item.
3. Do not exceed weight capacities, evenly distributed from bottom up. Be aware of dynamic loading! Sudden load movement may briefly create excess load causing product failure.
4. Use only on a flat, level, hard and smooth surface capable of safely supporting a Manual pipe bender.
5. Use as intended only.
6. Inspect before every use; do not use if parts are loose or damaged.



WARNING!

DO NOT let comfort or familiarity with product (gained from repeated use) replace strict adherence to the product safety rules. If you use this product unsafely or incorrectly, you can suffer serious personal injury.

- When the compressed air is heavily contaminated, the filter cartridges have to be exchanged in shorter intervals !
- Saturated filter cartridges may cause quality problems during paint jobs. Furthermore, using a supplied-air respirator could then be harmful, causing permanent health damage and even death!

Preparation

Before beginning assembly of product. make sure all parts are present .

Compare parts with package contents list and hardware contents list .

If any part is missing or damaged. do not attempt to assemble the product .

The assembly of all calibration shall meet the maximum flow requirement. Please clean the port and fitting before installation, it will effectively avoid bring dust to the air path.

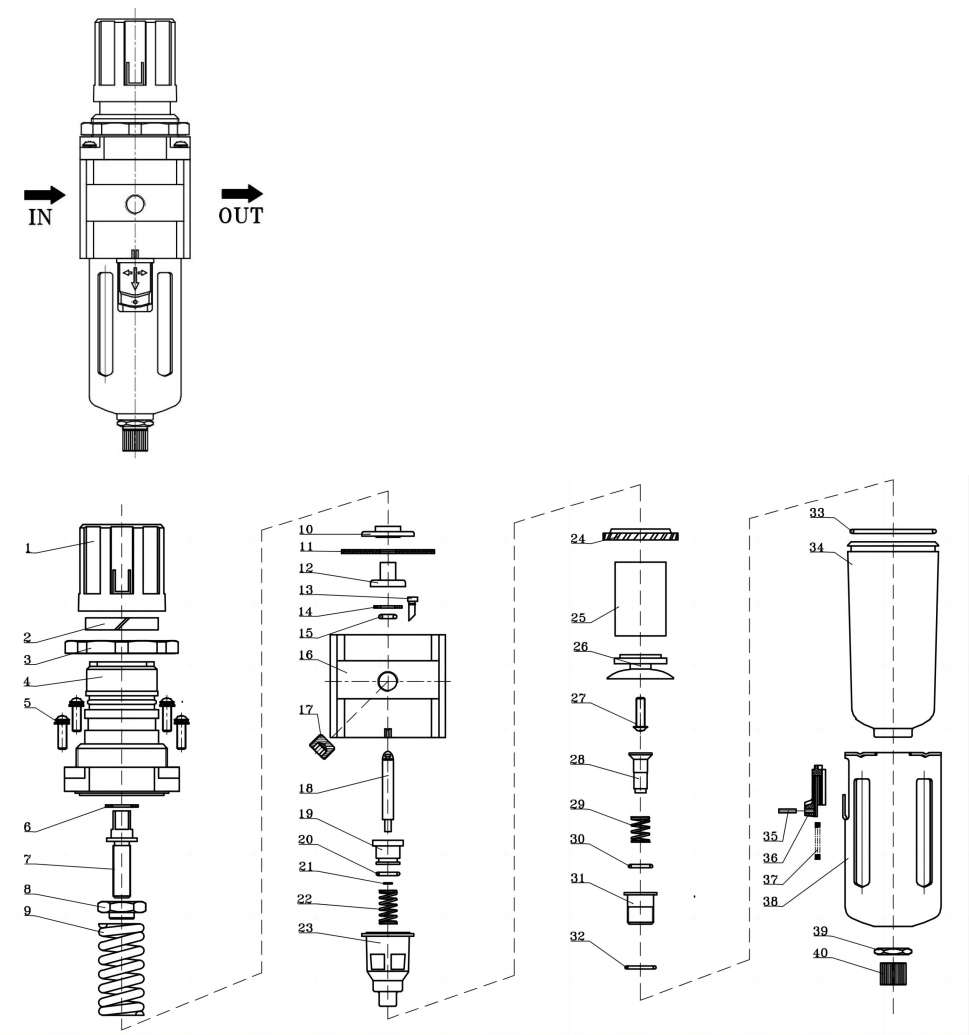
Pay attention to direction of air flow and arrow pointing on product body if correct, minding port and thread size if match.

Installation instructions

Notes:Please use a wrench to tighten fittings to avoid leakage.

The first installation may have an excretion reaction (Not leakage, for the first time the internal pressure is different from the outside, it is necessary to discharge the excess air first) In this case, please patiently wait for a while and it will work well.

Assembly drawing



Name	Qty	Name	Qty
1. Filter valve body	2	2. Vane	2
3. Filter element	2	4. Stud	2
5. Manger	2	6. Discharge valve element	2
7. Spring	2	8. O-ring	2
9. Discharge valve seat	2	10. O-ring	2
11. O-ring	2	12. Cup	2
13. Shield	2	14. Locking plate	2
15. Spacer pin	2	16. Spring	2
17. Hexnut	2	18. Knurled nut	2
19. Hexagon socket countersunk head screw	4	20. Pressing plate	2
21. O-ring	4	22. Intermediate block	2
23. L-holder	2	24. Pressure regulating valve seat	1
25. O-ring	1	26. O-ring	1
27. Big check ring	1	28. Spring	1
29. Check ring	1	30. Valve element	1
31. Valve rod	1	32. Relief valve body	1
33. Hex socket plug	1	34. O-ring	1
35. Small retainer	1	36. Feedback catheter	1
37. Diaphragm seat	1	38. Diaphragm	1
39. Diaphragm tray	1	40. SV-Spring	1
41. Pressure regulating nut	1	42. Pressure adjusting screw	1
43. Bonnet	1	44. Flat pan head screw combination	4
45. Octagonal hat	1	46. Marking ring	1
47. Pressure regulating hand wheel	1		

Operation instructions

- 1.1 Before pressurizing system, make certain the bowl is securely locked in place by hand tightening the bowl ring until it is snug.
- 1.2. Unlock the regulator adjusting knobby pulling knob away from the regulator.
- 1.3. Turn the regulator adjusting knob counter clockwise until no load is on the regulating spring.
- 1.4. Turn on the air pressure supply and turn the adjusting knob clockwise until the desired outlet pressure is reached. Push the regulator adjusting knob toward the regulator to lock in desired pressure.
- 1.5. The first filter stage separates particles $>5\mu\text{m}$ as well as condensed water and oil. The PE filter is integrated in the filter, fineness $5\mu\text{m}$.
- 1.6. PE filter and filter housings have to be clean every 6 months at the latest; replace PE filter, if necessary!



Pressure Adjustment

Pull up the knob of pressure gauge, rotate:

If you do clockwise rotation, pressure will rise steadily. Pressure will down when you rotate counterclockwise.

Stop turning after reaching the required index and lock down the knob, forget this step you may face leakage problem.



Dial Reading

Make sure that the pressure gauge is tightly installed on the main body, and pay attention to whether the reading rises and falls smoothly while adjusting pressure.



Drainage

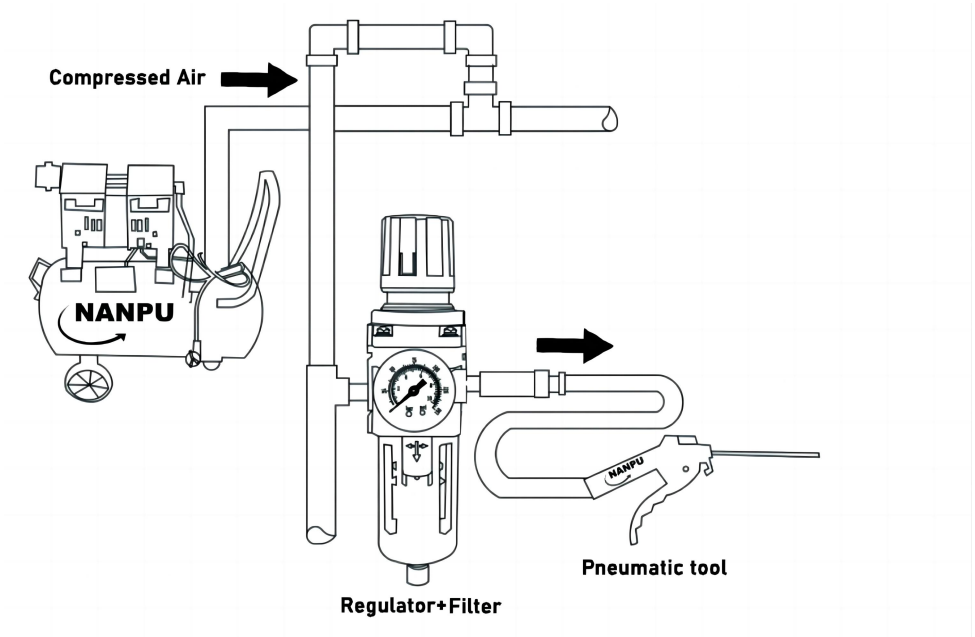
1. Manual drain

- a. When water exceeds the level, please drain off the water, press up the bottom of brass drain body, then it will start to drain.
- b. When the water level exceeds the maximum limit, please drain off the water to keep optimal dehumidification.

2. Auto drain

The auto drain only works properly when the filter is vertically mounted. If a certain condensate filling level is reached inside the filter housing the condensate drain valve opens automatically draining the condensate through the condensate drain hose into the collection container (not included in delivery) until just a small residual quantity remains

Pneumatic schematic diagram



MAINTENANCE/ Service

Have your tool serviced by a qualified repair person using only identical replacement parts. This will ensure that the safety of the tool is maintained. PE filter and filter housings have to be cleaned after 6 months at the latest; replace PE filter, if necessary!

Disposal

This product should be disposed of in accordance with local regulations. If you are unsure how to proceed, contact your local authority.

Only qualified technicians are authorized to undertake the repair of Manual pipe bender.

For your safety, please observe all safety notes, precautions, and details in this manual.

Warranty

1. This warranty shall only cover claims for damage due to a fault in the product's manufacture
2. If a warranty claim is made, the party entitled to warranty cover must present the proof of purchase, including the purchase date.
3. Customers' satisfaction is always the motivation of our brand growth. We promise to help you solve any issues . Please just let us know if you need help.

OUR SERVICE TEAM PROMISES TO REPLY TO YOUR MESSAGE WITHIN 24H.

Scope of Warranty

1. We guarantee that VEVOR products are produced in accordance with iso9001 Quality Management procedures and are free of manufacturing defects for the period of warranty.
2. This warranty covers faults in the products due to manufacturing defects within 1 year from date of purchase.After inspection by sales representative, defective products will be replaced or repaired with equivalent goods free of charge.
3. Any warranty claim made during warranty period shall not extend the overall period of warranty coverage.
- 4.Warranty periods:Warranty claim date

WHAT IS NOT COVERED UNDER THIS WARRANTY:

A. Implied warranties, including those of merchantability and fitness for a particular purpose are limited from the date of original purchase as stated in the duration. If this product is used for commercial,industrial or rental purposes,the warranty will apply for ninety(90)days from the date of purchase. Some States do not allow limitation on how long an implied warranty lasts,so the above limitations may not apply to you.

B. Any incidental, indirect, or consequential loss, damage or expense that may result from any defect,failure,or malfunction of the product. Some States do not allow the exclusion or limitation of incidental or consequential damages,so the above limitation or exclusion may not apply to you.

C. Any failure that results from an accident, purchaser's abuse,neglect or failure to operate products in accordance with instructions provided in the owner's manual(s) supplied with product. Accident,purchaser's abuse,neglect

or failure to operate products in accordance with instructions shall also include the removal or alteration of any safety devices, if such safety devices are removed or altered, this warranty is void.

D. Normal adjustments which are explained in the owner's manual(s) provided with the product.

E. Items or service that are normally required to maintain the product, i.e. O-rings, springs, bumpers, debris shields, driver blades, fuses, batteries, gaskets, packing or seals, fluid nozzles, needles, sandblast nozzles, lubricants, material hoses, filter elements, motor vanes, abrasives, blades, cut-off wheels, chisels, chisel retainers, cutters, collets, chucks, rivet jaws, screw driver bits, sanding pads, back-up pads, impact mechanism, or any other expendable part not specifically listed. These items will only be covered for ninety(90) days from date of original purchase. Underlined items are warranted for defects in material and workmanship only.

RESPONSIBILITIES OF WARRANTOR UNDER THIS WARRANTY:

Repair or replace, at warrantor's option, products or components which are defective, have malfunctioned and/or failed to conform within duration of the warranty period.

RESPONSIBILITIES OF PURCHASER UNDER THIS WARRANTY:

A. Provide dated proof of purchase and maintenance records.

B. Deliver or ship the product. Freight costs, if any, must be borne by the purchaser.

C. Use reasonable care in the operation and maintenance of the products as described in the owner's manual(s).

VEVOR[®]

TOUGH TOOLS, HALF PRICE

Technical Support and E-Warranty Certificate
www.vevor.com/support
Made In China