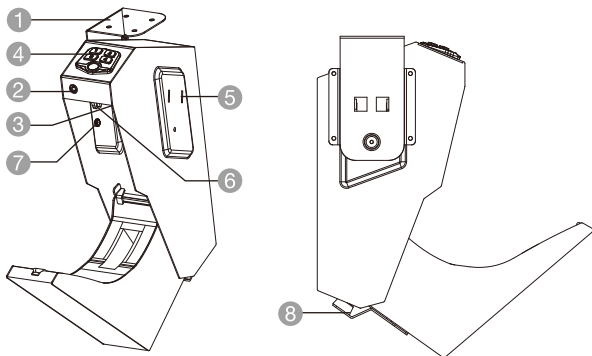


Welcome Guide • English

■ Contents:



- | | | | |
|---|-------------------------------------|---|------------------------|
| ① | Mounting bracket | ⑤ | Holes of mounting hook |
| ② | Emergency keyhole | ⑥ | Reset button |
| ③ | Battery compartment | ⑦ | Thumb screw |
| ④ | Panel (buttons & biometric scanner) | ⑧ | Rubber bumper |
-

IMPORTANT SAFEGUARDS



Read these instructions carefully and retain them for future use. If this product is passed on to a third party, then these instructions must be included.

When using electrical appliances, basic safety precautions should always be followed to reduce the risk of fire, electric shock, and/or injury to persons including the following:

Battery Warnings

- Always insert batteries correctly with regard to polarity (+ and -) as marked on the battery and the product.
- Exhausted batteries should be immediately removed from product and properly disposed.

SAVE THESE INSTRUCTIONS

Before First Use

- Check for transport damage.

⚠ DANGER Risk of suffocation! Keep any packaging materials away from children – these materials are a potential source of danger, e.g. suffocation.

Opening the Safety Device for the first time

- Insert the emergency key and turn it counterclockwise. The safety device will then be open.

Battery Installation

- After opening the door using the emergency key, install 4x AA batteries (not included). To install the batteries, locate the battery compartment (3). Clip in the batteries and place in the battery compartment. Pay attention to the "+" and "-" signs. Replace battery compartment cover. Repeat above steps for battery replacement.

⚠ WARNING Do not mix old and new batteries.

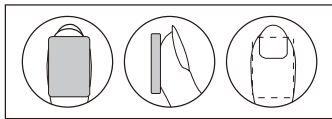
⚠ WARNING Do not mix alkaline, standard (carbon-zinc), or rechargeable (ni-cad, ni-mh, etc) batteries.

Registering Fingerprints (Maximum storage of 50 fingerprints)

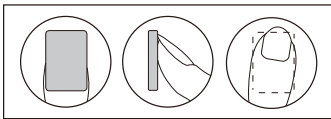
- To register your fingerprint, locate the "Reset" button (5).
 - a. Press and hold the reset button until you hear two beeps and the buttons flash blue twice.
 - b. Press your finger on the biometric scanner. Remove your finger when you hear two beeps and see two blue flashes.
 - c. Now your fingerprint has been successfully registered.
 - d. If the buttons flash red 5 times with 5 beeps, it means registration has failed and you must repeat the above steps.
- **Note:** You cannot register more than 50 fingerprints. If the red light flashes 5 times with 5 beeps when you press the reset button, it means the fingerprint storage capacity is full.
- **Suggestion:** To increase capture accuracy, register 3 or 4 times with different parts of the same finger to ensure most areas of the finger are registered.

Registering the same finger at multiple positions.

Registration #1 - Centered and Vertical



Registration #2 - Centered at an angle



Delete the Registered Fingerprint

1. Press and hold the reset button.
 2. You will hear two beeps together with two blue flashes.
 3. Keep the reset button depressed until you hear another two beeps with two blue flashes, then release it.
 4. Now all registered fingerprints are erased.
-

Programming Security Code

- The safety device will accept a 4 to 6 digit code. To program your personal code locate the “Reset button” (6).
 - a. Press and hold the reset button until you hear two beeps and the buttons flash blue two times.
 - b. Enter your 4 to 6 digit personal code and press the “Reset” button again to store your new personal code.
 - c. If your new personal code has been accepted, the buttons will flash blue twice and then turn off. You will also hear two audible beeps.
 - d. If the buttons flash red 5 times with 5 beeps, it means the safety device failed to set the new personal code. Repeat the steps above until successful.
- Please keep your new personal code in a safe place.

Opening Safety Device with Security Code

- With your correct personal code entered (factory pre-set code is 1-2-3-4), the buttons will light up blue and the safety device will automatically open. If the code is entered incorrectly, the buttons will flash red five times with five audible beeps.

Opening Safety Device with Registered Fingerprint

- Press your registered finger on the biometric scanner, the buttons will light up blue and the safety device will automatically open. If the fingerprint is invalid, the buttons will flash red five times with five audible beeps.

Entering the Wrong Code or Invalid Fingerprint

- If the wrong code or invalid fingerprint is entered five times in succession, the safety device will go into a lock-down mode for five minutes. During this period the front buttons will flash red when pressing any buttons and the electronic keypad will be temporarily disabled. The safety device can still be opened using the emergency key override. After a five minute period the safety device will automatically resume normal operation.
-

Turning off the Audible Sound

- To mute the audible sound of the electronics, depress the button "1" until the buttons flash blue once. To unmute the keypad, repeat the above step.

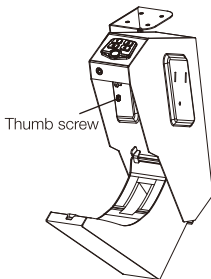
Low Battery Warning

- If the 4 AA batteries drop below the required voltage, after entering the correct personal code or valid fingerprint, the buttons will flash blue once when the door is open, then flash yellow five times with five beeps.
- In this case, you will need to replace the batteries.

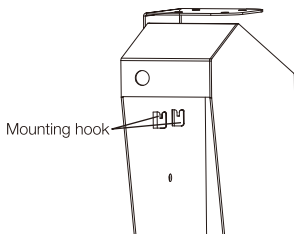
Mounting Installation

Use proper drilling tools and mounting hardware based on the type of surface you are mounting the safety device onto. Supplied screws are intended to be used on wooden surfaces.

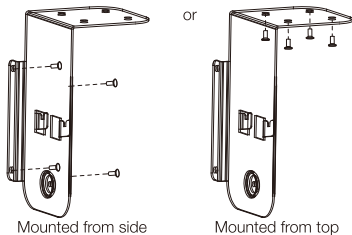
1. Open the safety device with the security code or key.
2. Unscrew the thumbscrews located on the inside of the safety device.



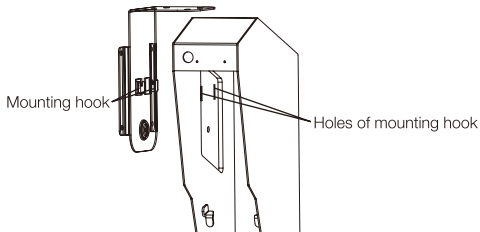
3. Remove the bracket by sliding it down and off the safety device.



4. Use the wall mounting holes on the side or top of the mounting bracket to mark the desired mounting location.



5. Use appropriate mounting hardware to screw the bracket to desired location.
6. Slide the safety device onto the bracket mounting hook, fix the safety device to the bracket with thumbscrews from inside the safety device.



7. Close the safety device.
 8. The safety device is now ready to be used.
-