

Library Cart l-shaped assembly instruction manual

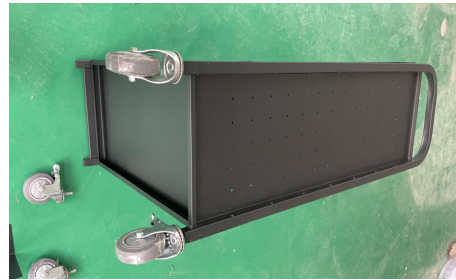


Serial number	Part name	The number of
1	Backplane	3
2	Left and right side panels	2
3	Support Plate	3
4	Bookends	2
5	wheel	4
6	Screw Rod	25
7	Spanner	1

Library Cart l-shaped assembly instruction manual



Step 1



Step 2

Assembly steps :

Step 1: Mount Accessories 1 and 3 on accessories 2 and fix them with accessories 6, you can use accessories 7 to install screws

Step 2: After the complete vehicle is assembled, install the fitting 5 in the hole at the bottom of the fitting 3. Our wheels are divided into two brake wheels and two non-brake wheels. You can choose the position of the brake wheel

Step 3: Put the bookshelf where you put your books and the car will be ready to use. We have an extra screw and a wrench for you to keep in reserve