

# **VEVOR<sup>®</sup>**

**TOUGH TOOLS, HALF PRICE**

Technical Support and E-Warranty Certificate [www.vevor.com/support](http://www.vevor.com/support)

## **DIESEL OIL TRANSFER PUMP OWNER'S MANUAL**

**MODEL: DCFD40A**

We continue to be committed to provide you tools with competitive price.

"Save Half", "Half Price" or any other similar expressions used by us only represents an estimate of savings you might benefit from buying certain tools with us compared to the major top brands and does not necessarily mean to cover all categories of tools offered by us. You are kindly reminded to verify carefully when you are placing an order with us if you are actually saving half in comparison with the top major brands.

# VEVOR®

*Diesel Oil Transfer Pump  
DCFD40A*

**DCFD40A**



<Picture Only For Reference >

## **NEED HELP? CONTACT US!**

Have product questions? Need technical support? Please feel free to contact us:

 **CustomerService@vevor.com**

This is the original instruction, please read all manual instructions carefully before operating. VEVOR reserves a clear interpretation of our user manual. The appearance of the product shall be subject to the product you received. Please forgive us that we won't inform you again if there are any technology or software updates on our product.

# MAIN SPECIFICATIONS

Model	Voltage	Input(W)	Flow Rate (GPM)	Inlet pipe specification (inch)	Outlet pipe specification (inch)	G.W. (kg)
DCFD 40A	DC12V	140	10	3/4	3/4	7.6

## General Safety Rules

**WARNING!** Read all safety warnings and all instructions. Failure to follow the warnings and instructions may result in electric shock, fire and/or serious injury. Save all warnings and instructions for future reference. The term "power tool" in all of the warnings listed below refers to your mains-operated (corded) power tool or battery-operated (cordless) power tool.

### 1) Pumping Warning

- a. This electric power tool can only be used to pump diesel oil. Pumping other liquids may damage the machine or pose a hazard.
- b. This set has been tested and calibrated prior to shipping. trace elements of diesel may be present inside this pump.
- c. The continuous use time of the pump should not exceed 30 minutes. More than 30 minutes may cause the machine to stop .

### 2) Work area safety

- d. Keep work area clean and well lit. Cluttered or dark areas invite accidents.
- e. Do not operate power tools in explosive atmospheres, such as in the presence of flammable liquids, gases or dust. Power tools create sparks which may ignite the dust or fumes.
- f. Keep children and bystanders away while operating a power tool. Distractions can cause you to lose control.

### 3) Electrical safety

- g. Power tool plugs must match the outlet. Never modify the plug in any way. Do not use any adapter plugs with earthed (grounded) power tools. Unmodified plugs and matching outlets will reduce risk of electric shock.

- h. please Use a 12V power supply
- i. Do not expose power tools to rain or wet conditions. Water entering a power tool will increase the risk of electric shock.
- j. Do not abuse the cord. Never use the cord for carrying, pulling or unplugging the power tool. Keep cord away from heat, oil, sharp edges or moving parts. Damaged or entangled cords increase the risk of electric shock.
- k. When operating a power tool outdoors, use an extension cord suitable for outdoor use. Use of a cord suitable for outdoor use reduces the risk of electric shock.

#### 4) Personal safety

- l. a) Stay alert, watch what you are doing and use common sense when operating a power tool. Do not use a power tool while you are tired or under the influence of drugs, alcohol or medication. A moment of inattention while operating power tools may result in serious personal injury.
- m. d) Remove any adjusting key or wrench before turning the power tool on. A wrench or a key left attached to a rotating part of the power tool may result in personal injury.
- n. f) Dress properly. Do not wear loose clothing or jewellery. Keep your hair, clothing and gloves away from moving parts. Loose clothes, jewellery or long hair can be caught in moving parts.

#### 5) Power tool use and care

- o. Do not use the power tool if the switch does not turn it on and off. Any power tool that cannot be controlled with the switch is dangerous and must be repaired.
- p. Disconnect the plug from the power source and/or the battery pack from the power tool before making any adjustments, changing accessories, or storing power tools. Such preventive safety measures reduce the risk of starting the power tool accidentally.
- q. Store idle power tools out of the reach of children and do not allow persons unfamiliar with the power tool or these instructions to operate the power tool. Power tools are dangerous in the hands of untrained users.
- r. Maintain power tools. Check for misalignment or binding of moving parts, breakage of parts and any other condition that may affect the power tool's operation. If damaged, have the power tool repaired before use. Many accidents are caused by poorly maintained power tools.
- s. Use the power tool, accessories and tool bits etc. in accordance with these instructions, taking into account the working conditions and the work to be performed. Use of the power tool for operations different from those intended could result in a

hazardous situation.

#### 6) Service

- t. a) Have your power tool serviced by a qualified repair person using only identical replacement parts. This will ensure that the safety of the power tool is maintained.

## Environment Condition

Temperature: -25°C—+50°C

Relative Humidity: 30%—90%

Atmospheric Pressure : 86Kpa— 106Kpa

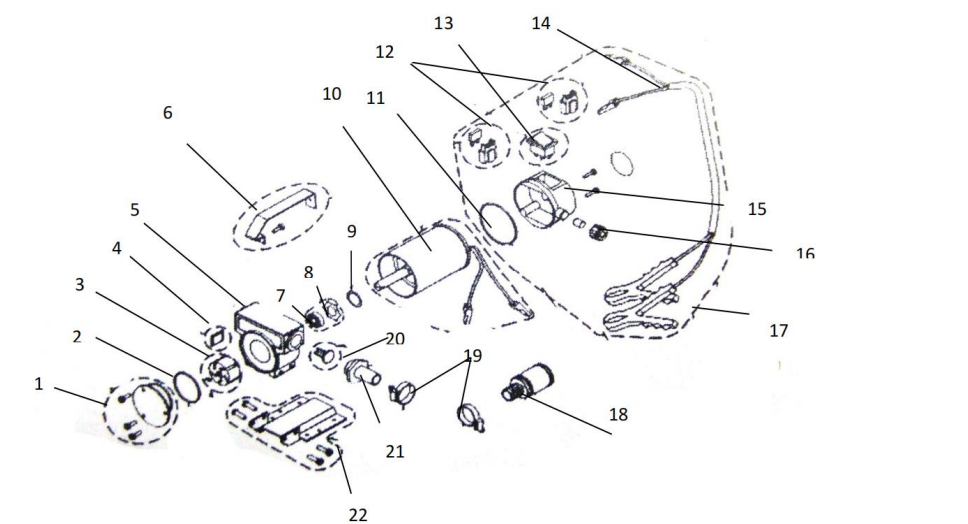
## Operation Instructions

1. Connect all spare parts correctly and ensure outlet connections are in proper placement.
2. Apply power to the motor by plugging the power cord into a power source. Turn on the pump by use of the on/off switch.
3. Open the fueling nozzle to fuel equipment.
4. When fueling is complete, return the nozzle to its storage position and turn off the pump.

## Common Troubleshooting

Fault Appearance	Main Reason	Fault Resolution
Motor does not turn	(1)The power cable is not plugged in. (2)The motor has jammed (3)Capacitor failure	(1)Check the electric cable (2)Replace the motor (3)Replace capacitors
Motor turns, but no oil output	(1)Suction side not submerged in oil (2)Vanes worn or gear damaged	(1)Check the oil suction hose/pipe (2)Replace vanes or gear
Little oil-output	Plugged strainer	Clean strainer

# Part List



No	Part Description	Qty	No	Part Description	Qty
1	Bolt	5	12	Carbob Brush,Brush Holder	2
2	O-Ring	1	13	Switch	1
3	Rotor	1	14	Cable	1
4	Vane	1	15	Plastic Cover	1
5	Pump Body	1	16	Cable Insulator	1
6	Handle	1	17	Cover	1
7	Seal Ring	1	18	Fliter	1
8	Bearing	1	19	Clamp	1
9	Snap Ring	1	20	Overflow Valve	1
10	Stator Shell	1	21	1" Swivel	1
11	O-Ring	1	22	Supptor,Bolt&Nut	1



# **VEVOR<sup>®</sup>**

**TOUGH TOOLS, HALF PRICE**

**TechnicalSupport and E-Warranty Certificate**

**[www.vevor.com/support](http://www.vevor.com/support)**