

# **VEVOR**<sup>®</sup>

**TOUGH TOOLS, HALF PRICE**

Support and E-Warranty Certificate

<https://www.vevor.com/support>

## **PORTABLE PAINT BOOTH USER MANUAL**

We continue to be committed to offering tools at competitive prices. "Save Half", "Half Price", or any other similar expressions used by us only represent an estimate of savings you might benefit from buying certain tools with us compared to the major top brands and do not necessarily mean to cover all categories of tools offered by us. You are kindly reminded to verify carefully when placing an order with us if you are saving half in comparison with the top major brands.

# VEVOR<sup>®</sup>

## Portable Paint Booth

**MODEL:0010/0011**



### **NEED HELP? CONTACT US!**

Have product questions? Need technical support? Please feel free to contact us:

 [\*\*CustomerService@vevor.com\*\*](mailto:CustomerService@vevor.com)

This is the original instruction, please read all manual instructions carefully before operating. VEVOR reserves a clear interpretation of our user manual. The appearance of the product shall be subject to the product you received. Please forgive us that we won't inform you again if there are any technology or software updates on our product.

# 1.SAFE INSTRUCTIONS



## **Warning:**

1. Spray paints and solvents can be dangerous if inhaled. Ensure you have good ventilation at all times.
2. Keep away from heat, sparks, and open flames when painting. Don't smoke.
3. When painting, make sure to keep the ventilation.
4. Paint is harmful to the body. Avoid contact with eyes and skin. Please take good protection.
5. When painting, avoid prolonged exposure to the sun.
6. When painting, lighting and electrical devices must be properly protected to avoid accidents or personal injury.
7. For best results, avoid painting in hot, humid weather.
8. Recycle the used paint cans to avoid environmental damage.



**CAUTION:** Carefully read instructions and procedures for safe operations.

## 2.PRODUCT INTRODUCTION

| Model<br>SPEC.     | 0010               | 0011               |
|--------------------|--------------------|--------------------|
| Size               | 90*62*62 in        | 120*84*72 in       |
| Material           | Oxford-fabric 210D | Oxford-fabric 210D |
| Color              | White              | White              |
| Ventilation window | 60*40cm            | 60*40cm            |
| Pole               | φ8.5mm             | φ8.5mm             |

## 3.PACKAGE CONTENT

| Model<br>Parts       | 0010 | 0011 |
|----------------------|------|------|
| Portable Paint Booth | ×1   | ×1   |
| Pole                 | ×2   | ×2   |
| Stake                | ×6   | ×6   |
| Storage Bag          | ×1   | ×1   |
| Plastic Wrap         | ×1   | ×1   |
| User Manual          | ×1   | ×1   |

## 4.PRODUCT DIAGRAM

1) 0010



| No. | Item                 | Qty |
|-----|----------------------|-----|
| 1   | Portable Paint Booth | 1   |
| 2   | Pole                 | 2   |
| 3   | Clip                 | 16  |
| 4   | Rope                 | 2   |
| 5   | Front Gauze Curtain  | 1   |
| 6   | Foot Clasp           | 4   |
| 7   | Ventilation Window   | 1   |

2) 0011



| No. | Item                 | Qty |
|-----|----------------------|-----|
| 1   | Portable Paint Booth | 1   |
| 2   | Pole                 | 2   |
| 3   | Clip                 | 16  |
| 4   | Rope                 | 2   |
| 5   | Front Gauze Curtain  | 1   |
| 6   | Foot Clasp           | 4   |
| 7   | Ventilation Window   | 1   |

## 5.INSTALLATION INSTRUCTION

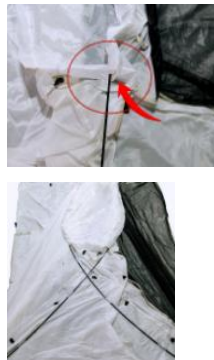
1. Unfold the tent and spread it out on a clean and level surface with the opening oriented towards the front.



2. Lay out two of the long poles and interlock all segments.



3. Insert poles through the tent sleeves, forming an "X" shape on the sides of the tent.



4. Insert the four ends of the two poles into the bottom of the four corners of the tent, as shown in the picture.



Attach frame clips located in the tent section to the tent and clip them into place.



Tie a bow on the side of the tent where the two poles form an "X".



7. If you need to use the tent on grass, please fasten the tent with stakes at the bottom loops and corners.



## Storage

Take out the four corners of the stakes.



2. Untie the knot in two places.



Release clips (16pcs)



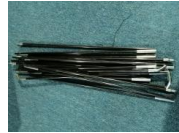
Take out all four corners of the poles, as shown in the picture.



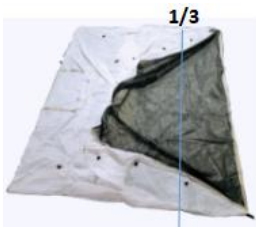
Pull the two poles out of the tent.



Put the combination rod away as shown in the figure and put it into the storage bag.



Lay the tent flat and fold it as shown in the picture.



Roll the bagging poles and tent together and load into the large storage bag as shown in the picture.





## 6. OPERATION GUIDE

Step 1. Assemble the portable paint booth.

Step 2. Roll up the front gauze curtain.

Step 3. Cover the bottom with the plastic wrap.

Step 4. The portable paint booth is ready for use.

Attention: This product is not waterproof. Please do not use it outdoor in rainy days.

For larger furniture, it is recommended to paint the front and top first and then dry the bottom and back.

2) For Small furniture, it is recommended to configure a rotating tray, small furniture placed on the rotating tray spray paint.



## 7. TROUBLESHOOTING, MAINTENANCE, AND REPAIR

1. To remove stains, clean with cold water and use mild remover if necessary. Do not use a strong stain remover to avoid damage to the fabric or local fading.

2. Do not use a washing machine or dryer to clean the tent to avoid causing fabric damage.

3. After cleaning, please spread the tent indoors or outdoors in a cool place to dry; Do not expose it to the sun to avoid damage to the fabric.

4. Check the tent regularly to see if there is any damage. If there is any damage, please repair it in time. You can use a waterproof repair subsidy to repair the damaged parts.

5. After each use, check whether the nail is damaged or bent. If it is damaged, replace it in time. If it is bent, straighten it with a hammer.
6. Check the pole after each use. If damaged, replace it in time.
7. Please store the tent in a dry and cool place, away from direct sunlight and damp places.
8. When the tent is stored, try to let it loose naturally, which can extend the service life of the tent, and put some desiccant to moisture-proof.

Manufacturer: Zhejiang Roy Industrial Co., Ltd

Add: No.8, Juhai Second Road, Qujiang District, Quzhou City, Zhejiang Province



**VEVOR**<sup>®</sup>

**TOUGH TOOLS, HALF PRICE**

Support and E-Warranty Certificate

<https://www.vevor.com/support>