

# Standing Prize Wheel

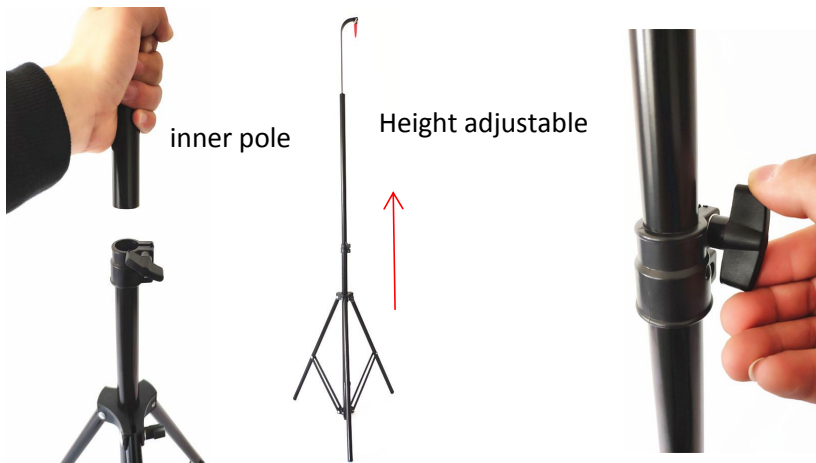
## Package Content



## Assembly Instruction

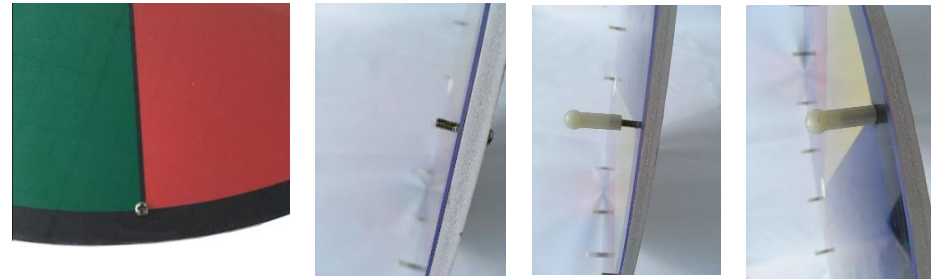
### STEP 1 Assembling the base

Open the part and elongate the inner pole, then locked.



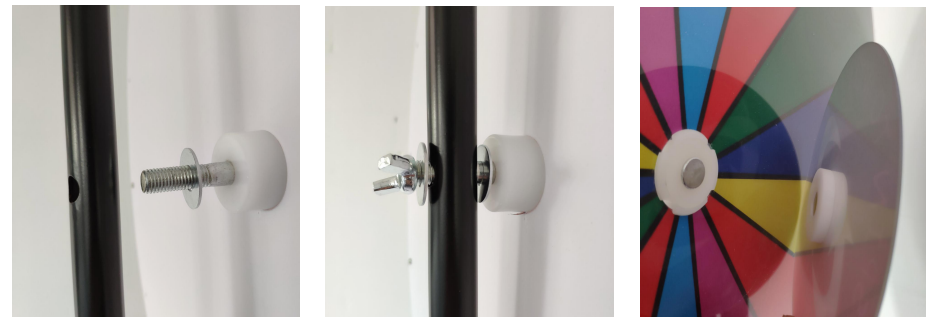
### STEP 2 Assembling the WHEEL

Remove the four small screws which are assembled on the WHEEL primarily at first. Afterwards, insert one screw into the back of the WHEEL and cover it with the plastic sleeve on the front. Repeat this step to assemble the rest



### STEP 3 Attaching the WHEEL to the BASE

The last step, attach the WHEEL to the base with the screw and its matched washer and wing nut. Attached the logo in front of the wheel.



**Your Standing Prize Wheel is now assembled and ready for USE !**