

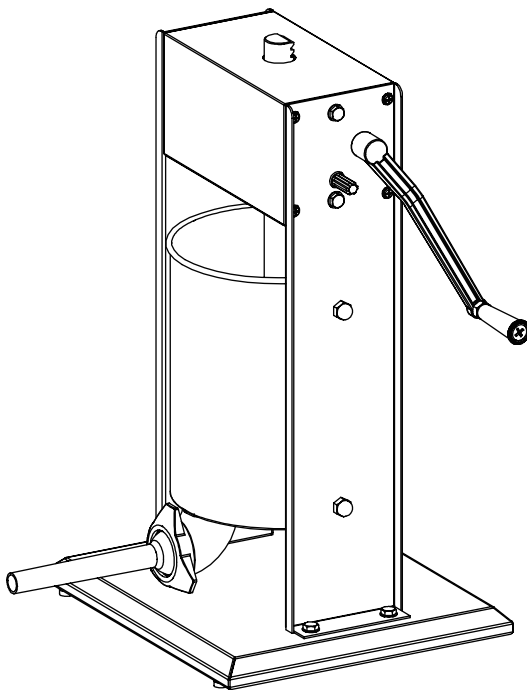
**VEVOR®**

**MANUAL SAUSAGE STUFFER  
ORIGINAL INSTRUCTION MANUAL**

# VEVOR<sup>®</sup> *ELECTRIC SAUSAGE STUFFER*

## *XZM-10D/XZM-15D*

XZ-3/XZ-5/XZ-7



### NEED HELP? CONTACT US!

Have product questions? Need technical support? Please feel free to contact us:



**CustomerService@vevor.com**

This is the original instruction, Please read all manual instructions carefully before operating. VEVOR reserves clear interpretation of our user manual. The appearance of the product shall be subject to the product you received. Please forgive us that we won't inform you again if there is any technology or software updates on our product.



## SAFETY INSTRUCTIONS

**Thank you for using this product. In order to make sure that you can operate the machine properly, please read this manual carefully before use. Please be sure to read the SAFETY PRECAUTIONS in this page to ensure your safe use.**

1. Do not place the product in the reach of children. Children should be supervised to ensure that they do not play with the appliance.
2. This product is not recommended for children or persons with physical, sensory and intellectual disabilities, unless they have gotten the supervision and instruction of how to use the product properly.
3. Do not disassemble the product at will. Do not allow things to enter or insert into the product, which may cause damage.
4. Only accessories provided by the seller or manufacturer can be used for the product. We will not be responsible for any failure caused by the use of accessories from other manufacturers, which are not covered by warranty.
5. Do not use the product on uneven, damp, non-heat resistant surfaces to avoid damage or failure.
6. Do not place the product directly on the fire or near the source of fire, otherwise the product will be damaged or even result in danger.
7. Please keep the plastic bag properly and do not let children play with it to avoid the risk of suffocation.

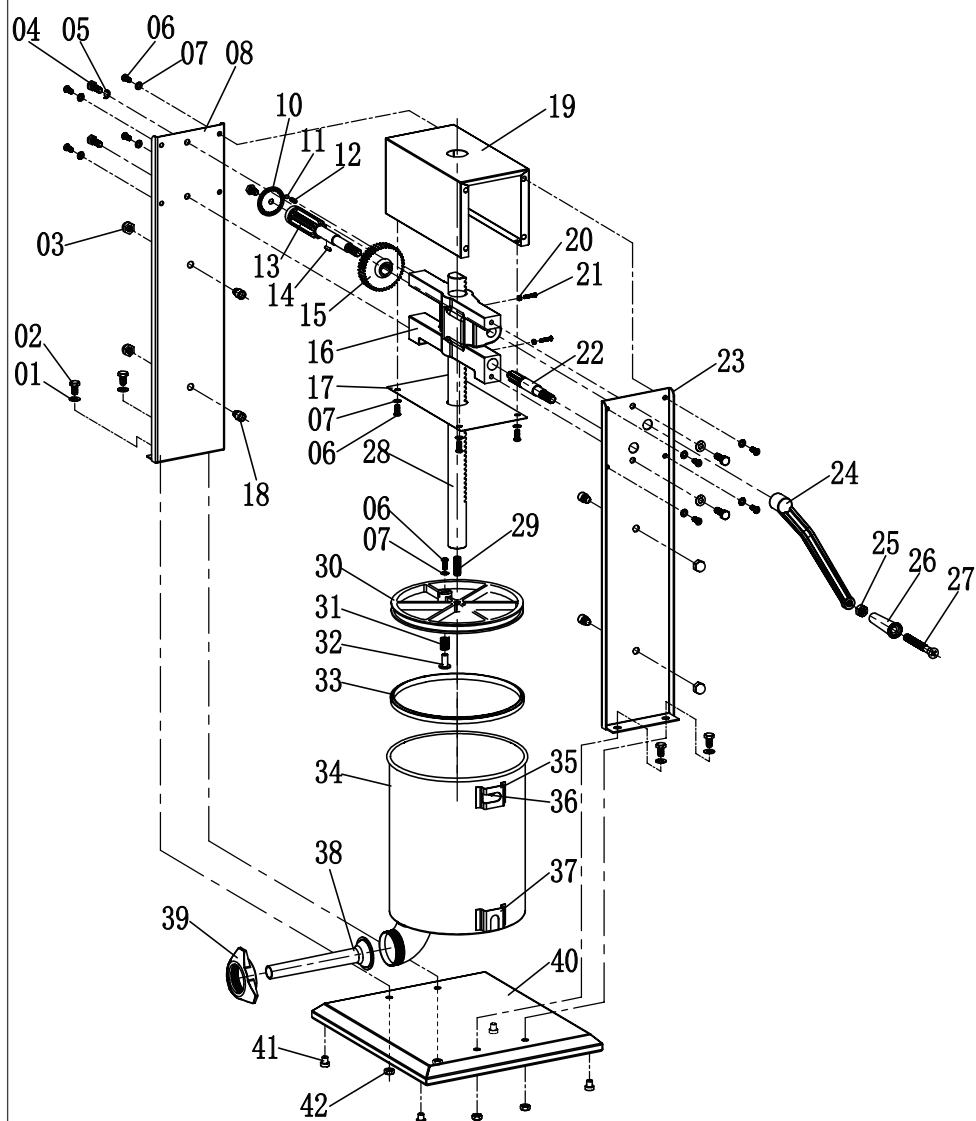
## INTRODUCTION

The machine is durable and includes a stainless steel base, metal gears, removable cylinder and exhaust valve for easy cleaning. Two stages of speed for strong push and quick lift. It comes in different sized sausage tubes. Sausage fillers are perfect for camping, butchers, food supplies, families, delis, cafes, takeaways and restaurants.

## SPECIFICATIONS

Model	XZ-3	XZ-5	XZ-7
Product Size	300*220*540mm	300*260*650mm	300x300x800mm
Capacity	3L	5L	7L
Speed Threshold	Stepless Speed Regulation	Stepless Speed Regulation	Stepless Speed Regulation
Bucket Fixed Mode	Removable and Tilt	Removable and Tilt	Removable and Tilt
Net Weight	7.8kg	9.8kg	10.8kg
Gross Weight	9.8kg	10.8kg	12.8kg

# EXPLOSIVE VIEW



No.	Name	QTY	No.	Name	QTY
1	SUS Flat Washer $\phi 8$	8	22	Pinion Shaft	1
2	SUS Hex Screw M8x16	4	23	Right Side Plate	1
3	SUS Cap Nut M10	4	24	Speeders	1
4	SUS Hex Screw M8x25	4	25	Nut M10	1
5	SUS Spring Washer $\phi 8$	4	26	Hand Shank	1
6	SUS Phillips Screw M6x16	13	27	Bearing Retainer 2	1
7	SUS Flat Washer $\phi 6$	13	28	Gear Rack	1
8	Left Side Plate	1	29	Doutlr End Stud M10x30	1
9	Zinc-plated External Hexagonal Screws M8x12	1	30	Piston	1
10	Anti-slip Disc	1	31	Spring 1	1
11	Steel Ball $\phi 6$	1	32	Exhaust Valves	1
12	Anti-slip Spring $\phi 6 \times 16$	1	33	Sealing Washer	1
13	Rack Wheel Shaft	1	34	Charging Basket	1
14	Nut M4	1	35	Buckle A	2
15	Gear Wheel	1	36	Spring 2	2
16	Pinion Stand	1	37	Buckle B	2
17	Base Plate	1	38	Packed Pipe	4
18	SUS Inner Hexagon Screw M10x16	4	39	Trilobal Cap	1
19	Gear Holder Housing	1	40	Pedestal	1
20	Nut M4	2	41	Rubber Pads	4
21	Phillips Screw M4x20	2	42	SUS Nut M8	4

## ASSEMBLY AND INSTALLATION

1. Choose a workbench with a suitable height and make sure you have enough room for operation.
2. Assemble the stuffing tube. Four sizes of stuffing tubes have been provided with the unit (Diameters are 15mm, 21mm, 30mm and 37mm). Choose an appropriate tube and carefully insert it into the fixed collar, slowly tighten it onto the barrel, press down on the packing tube, and make sure it has been stuck and locked.

## OPERATION

1. Make sure everything that comes into contact with the sausage is cleaned.
2. Slide the casing onto the appropriate size of the fill pipe.
3. Place the handle on the large gear shaft and turn it counterclockwise to free the piston from the cylinder.
4. Erecting the cylinder and add material to the cylinder.
5. Put the cylinder back in place.
6. Fix the handle to the pinion shaft and turn it clockwise to allow the piston to enter the cylinder.
7. Continue to turn the handle so that the sausage always passes through the tube at the same speed.
8. Turn the handle until the sausage runs out.
9. Repeat Operation 2 if necessary.

## REPAIR AND MAINTENANCE

1. Remove and clean all parts that come in contact with the sausage.
2. Wipe non-removable parts with a cloth to remove bacteria.
3. Lubricate moving parts and gears to extend product life.
4. Do not use corrosive or abrasive detergents for cleaning.
5. Store the machine in a dry, clean and secure place.

**Manufacture:** Anhui Xuzhong Intelligent Technology Co., Ltd.

**Add:** No. 23, Lantian Road, Economic Development Zone, Wangjiang County, Anqing City, Anhui Province, China

**UK Importer:** FREE MOOD LTD

**Address:** 2 Holywell Lane, London, England, EC2A 3ET

**EC Importer:** WAITCHX

**Address:** 250 bis boulevard Saint-Germain 75007 Paris

UK	REP	EUREP UK LTD UNIT 2264, 100 OCK STREET, ABINGDON OXFORDSHIRE ENGLAND OX14 5DH
----	-----	---

EC	REP	EUREP GmbH Unterlettenweg 1a, 85051 Ingolstadt, Germany
----	-----	---



**VEVOR<sup>®</sup>**

E-mail: [CustomerService@vevor.com](mailto:CustomerService@vevor.com)