

VEVOR[®]

TOUGH TOOLS, HALF PRICE

Technical Support and E-Warranty Certificate www.vevor.com/support

TRAILER HITCH

We continue to be committed to provide you tools with competitive price.

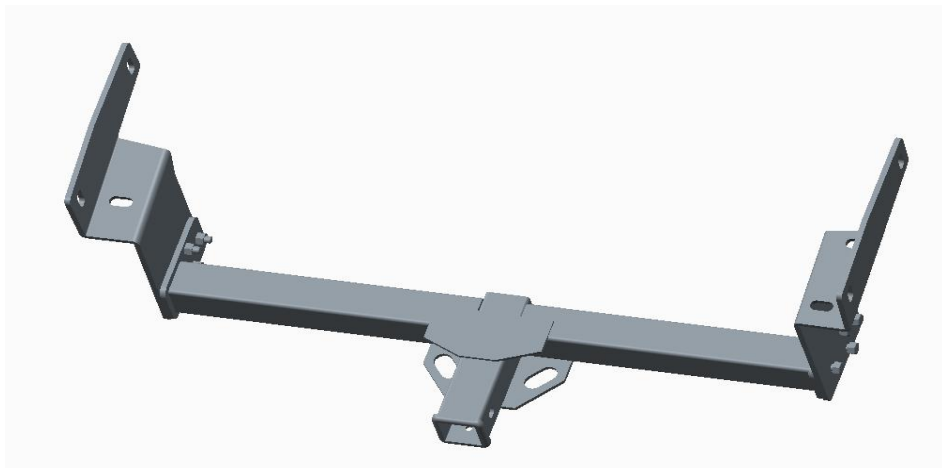
"Save Half", "Half Price" or any other similar expressions used by us only represents an estimate of savings you might benefit from buying certain tools with us compared to the major top brands and does not necessarily mean to cover all categories of tools offered by us. You are kindly reminded to verify carefully when you are placing an order with us if you are actually saving half in comparison with the top major brands.

VEVOR®

TOUGH TOOLS, HALF PRICE

TRAILER HITCH

MODEL:NT-1246



NEED HELP? CONTACT US!

Have product questions? Need technical support? Please feel free to contact us:

Technical Support and E-Warranty Certificate
www.vevor.com/support

This is the original instruction, please read all manual instructions carefully before operating. VEVOR reserves a clear interpretation of our user manual. The appearance of the product shall be subject to the product you received. Please forgive us that we won't inform you again if there are any technology or software updates on our product.

IMPORTANT SAFEGUARDS



Read and understand this entire manual before operating and servicing this product. Failure to follow these warnings and instructions can cause death, personal injury or damage to valuable property.

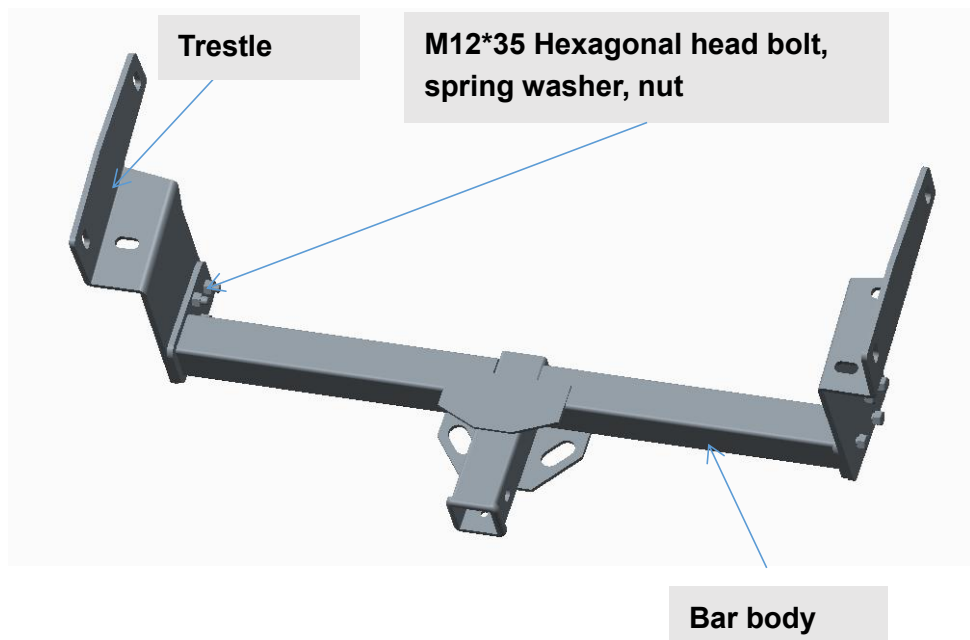
Base safety rules

1. Please tighten the installation; damage or danger can be done to loosen it. The warranty does not cover this damage.
2. Adhere to all Department of Transportation (D.O.T.) requirements when using this product.
3. Use common sense when working. Stay alert and concentrate when setting up and using this product. Never operate while under the influence of alcohol, drugs or medications.
4. This product is not a toy. Keep it out of reach of children. While using this product, keep the work area clean and well lighted. Keep children out of the work area.
5. Dress appropriately. Never wear loose fitting clothing or jewelry when using. Contain long hair, and keep hair, clothing and gloves away from moving parts.

SAVE THESE INSTRUCTIONS

Parts List				
ITEM	QTY	PART NUMBER	Designation	Notes
1	1		Drag bar body	
2	2		Trestle	
3	1	M10*15	Hexagon bolt with flange	Threaded hole installed in square mouth
4	3	M12*45	Hexagon bolt	Used to install the tow bar on the vehicle
5	4	D12	Spring washer	
6	1	M12*30	Hexagon bolt	
7	4	Φ12	Flat gasket	
8	1	M10*40	Hexagon bolt	
9	1	D10	Spring washer	
10	1	M10	Base plate nut	
11	1	Φ10	Flat gasket	
12	8	M12*35	Hexagon bolt	Used to connect the bar body and bracket
13	8	D12	Spring washer	
14	6	M12	Hexagon nut with flange	
15	8	Φ12	Flat gasket	

SPECIFICATIONS			
MODEL	NT-1246 Class 3 Hitch		
Weight Carrying Capacity	6000lbs		
	Years	Make	Models
Applications	2019-Current	Toyota	RAV4



M10*15 hexagon nut with flange

Installation steps:

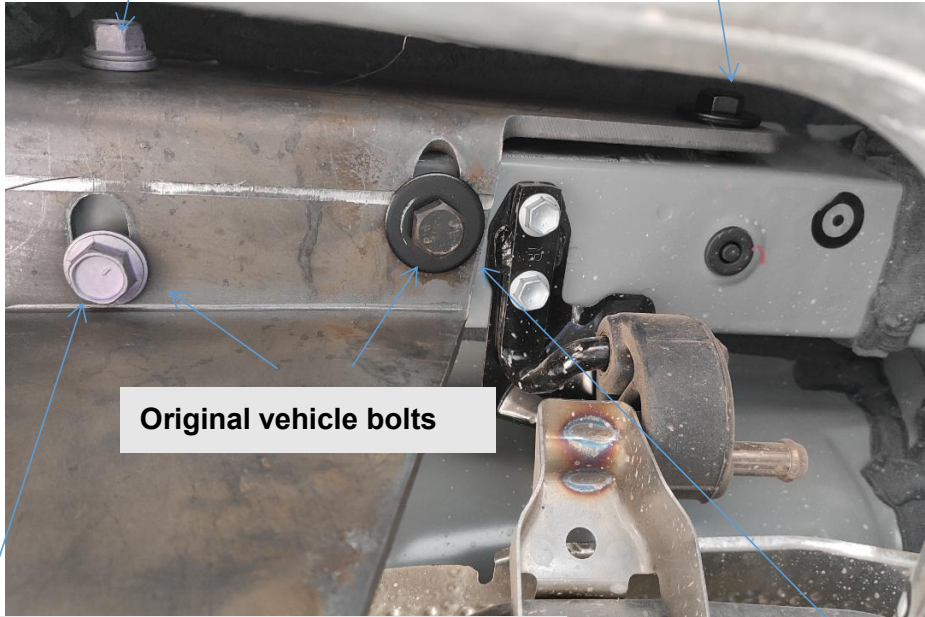
1. First, install the bracket and bar body with bolts
2. Remove the screws and rubber cover from the bottom of the original car beam
3. Install the tow bar onto the vehicle using the removed original vehicle bolts and the bolts provided with the tow bar (as shown in the figure below, taking the installation on the left side of the tow bar as an example)
4. Screw the M10 * 15 hexagonal flange bolt onto the square threaded hole
5. Installation completed

Original vehicle bolts



M12*45 Hexagonal head bolt, spring washer, nut

M12 * 30 hexagonal head bolt, flat washer, spring washer (M12 * 45 hexagonal head bolt is used for the right bracket).



Original vehicle bolts

**Insert the hole here on the left first.
Screw on the M10 base plate nut again
M10*40 bolt, flat washer, spring washer**

**There is no such
hole on the right
side**

Sanven Technology Ltd.

Address: Suite 250, 9166 Anaheim Place, Rancho Cucamonga, CA 91730

Made In China

VEVOR[®]

TOUGH TOOLS, HALF PRICE

Technical Support and E-Warranty Certificate

www.vevor.com/support