

VEVOR[®]

TOUGH TOOLS, HALF PRICE

Technical Support and E-Warranty Certificate www.vevor.com/support

GRINDER

USER MANUAL

MODEL: SX-2A SX-4A SX-6B SX-8B SX-10B

We continue to be committed to provide you tools with competitive price.

"Save Half", "Half Price" or any other similar expressions used by us only represents an estimate of savings you might benefit from buying certain tools with us compared to the major top brands and does not necessarily mean to cover all categories of tools offered by us. You are kindly reminded to verify carefully when you are placing an order with us if you are actually saving half in comparison with the top major brands.

VEVOR[®]

GRINDER

SX-2A SX-4A SX-6B SX-8B SX-10B

SX-2A SX-4A SX-6B SX-8B SX-10B



<Picture Only For Reference >

NEED HELP? CONTACT US!

Have product questions? Need technical support? Please feel free to contact us:

 **CustomerService@vevor.com**

This is the original instruction, please read all manual instructions carefully before operating. VEVOR reserves a clear interpretation of our user manual. The appearance of the product shall be subject to the product you received. Please forgive us that we won't inform you again if there are any technology or software updates on our product.

Note: Before beginning assembly of product, make sure all parts are present. Compare parts with package content list and hardware contents. Do not attempt to assemble the unit if any parts are missing or damaged.

Contact customer service for replacement parts.

Warnings

When using electrical appliances, basic safety precautions should always be followed including the following:

SAVE THIS INSTRUCTION!

1.READ ALL OPERATING INSTRUCTIONS AND PRODUCT SAFETY LABELS! FAILURE TO FOLLOW ALL INSTRUCTIONS MAY RESULT IN SERIOUS INJURY OR PROPERTY DAMAGE!

2.CHECK FOR DAMAGED PARTS: Before using the grinder, check whether all parts work normally and perform the expected functions. Check for alignment, binding and installation of moving parts. and any other conditions that may affect the operation. If any parts, the Power Cord or the Grinder are damaged, call the Customer Service number shown in this manual.

3.Always unplug power cord from outlet when not in use, before putting on or taking off parts or accessories, and before cleaning. After unplugging the unit, turn power switch ON, then OFF to ensure that all power has been discharged from the grinder.

4.This appliance can be used by children aged from 8 years and above and persons with reduced physical, sensory or mental capabilities or lack of experience and knowledge if they have been given supervision or instruction concerning use of the appliance in a safe way and understand the hazards involved. Children shall not play with the appliance. Cleaning and user maintenance shall not be made by children without supervision.

5.NEVER LEAVE GRINDER UNATTENDED WHILE IT IS RUNNING!

6.Wait until all moving parts have stopped and turn off power before removing any part from the grinder.

7.DO NOT use outdoors, this product is intended for INDOOR USE ONLY.

8.DO NOT pull the power cord to disconnect.

9.DO NOT USE WITH EXTENSION CORD. Always plug directly into a grounded wall receptacle.

10.This grinder uses a grounded, three prong plug (hot, neutral and ground), the grounding plug is used for electrical appliances with metal shell to prevent electric shock. DO NOT

change or alter the plug in any way. NEVER break off a grounding prong from a 3-- conductor plug. Doing so will invalidate the warranty and may cause electric shock.

11.Place the grinder on a firm and stable surface. Ensure that the grinder is not placed near the edge of the worktop, where it can be easily pushed off or fall.

12.The Gear Housing and the Motor Cover may become HOT during operation. This is normal. DO NOT TOUCH these parts while operating.

13.To reduce the risk of unintentional starting, check that the control is OFF before plugging the cord into wall outlet. To disconnect, turn the controller to OFF, then remove plug from wall outlet.

14.DO NOT operate your grinder under a wall cabinet. Always unplug the unit from the electrical outlet when storing it. Not doing so could create a risk of fire, especially if the appliance touches the walls of the garage or the door touches the unit as it closes.

15.NEVER plug the grinder in where water may flood the area.

16.To protect against risk of electrical shock, DO NOT submerge the grinder in water or other liquids. Be sure the grinder is disconnected from the power source before cleaning. NEVER rinse the Grinder Motor under running water, only use a moist cloth to clean the Grinder Motor Unit.

17.The use of attachments or parts not specifically recommended or sold by the manufacturer for this grinder will void the warranty and may cause fire, electric shock or injury.

18.HANDS WASH ALL PARTS! DO NOT USE DISHWASHER. Never put the unit near a hot burner, in an oven, or in a dishwasher.

19.NEVER use abrasive cleaning agents or abrasive cloths when cleaning the grinder.

20.The Manufacturer disclaims any responsibility in the case of improper use of Grinder. Improper use of the Grinder voids the warranty.

21.DO NOT REMOVE WARNING LABELS FROM THE GRINDER. Doing so will void the product warranty and may result in serious personal injury.

22.This appliance must be grounded while in use to protect the operator from electrical shock. This grinder uses a grounded, three prong plug that should be connected directly to a grounded 120V(US)/230V(EC), three prong grounded wall outlet receptacle. Grounded plugs are used on metal-encased electric appliances in order to provide protection from an electric shock. DO NOT change or alter the plug in anyway. NEVER break off a grounding prong from a 3-conductor plug. Doing so voids the warranty and may result in electric shock.

23.Type X attachment: If the supply cord is damaged, it must be replaced by a special cord or assembly available from the manufacturer or its service agent.

24.Do not fill the grinding tank to full otherwise it will cause overload. The material you gonna to grind one time must cover the long blade in the middle and no more than 2/3 of the tank. Because this machine needs a space to complete the cycle of the blades and the material to be grind.

25.Even if grinding stone, it only takes 2 minutes, so don't use it for too long. It takes 5-10 minutes to rest after every 3 minutes of work. If you grinding some hard items, there should has a interval which is to prevent bearing overheating, damage to the motor. General grains only need 30s to be ground into powder. If you are not satisfied with the grinding effect, you can sieve out the coarse particles with a mesh screen and grind it again for finer powder.

26.To ensure safety, the nut should be tightened before grinding. After long-term use, blades and carbon brushes need to be replaced if they are worn.

27.The motor of the grinder is the brush motor, the sparks and the odor is normal when the first several uses. The sparks and the brush frictional odor will disappear after you use the machine some times later.

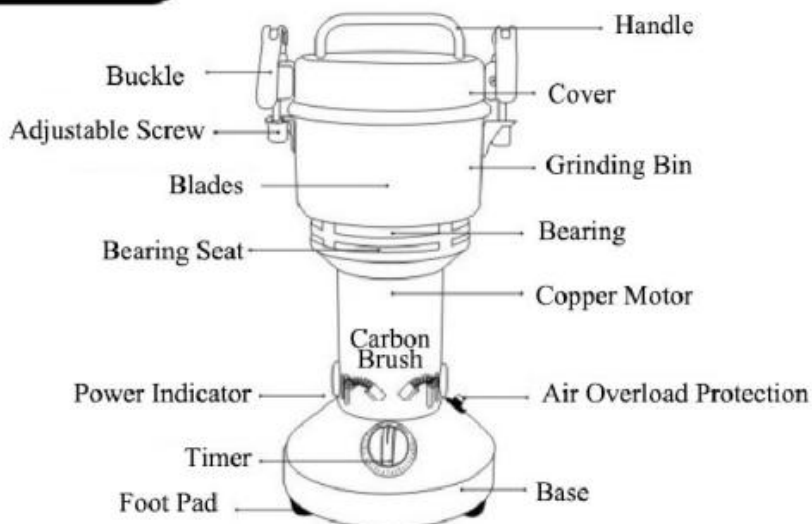
You can Grind some rice or tea leaves first for several times to eliminate the odor.

TECHNICAL PARAMETER

MODEL	Capacity	RATINGS		Continuous working time
SX-2A	100g	110V/60Hz	450W	≤5min
		230V/50Hz		
SX-4A	200g	110V/60Hz	900W	
		230V/50Hz		
SX-6B	300g	110V/60Hz	1100W	
		230V/50Hz		
SX-8B	400g	110V/60Hz	1300W	
		230V/50Hz		
SX-10B	500g	110V/60Hz	1500W	
		230V/50Hz		

PRODUCT STRUCTURE

Upright Type



Swing Type



OPERATING INSTRUCTION

1. Operations Guide:

- 1)Open the upper cover and put the dried material inside;
- 2)Close the upper cover tightly; (Please make sure the lid is rotated to the end and locked tightly on the top.)
- 3)Plug in and turn on the timer switch, then turn on the switch for grinding(Rolling sound will be heard);
- 4)Turn off the switch; (When you hear the sound rolling evenly, the material has been grinded into powder, then you can turn off the switch)
- 5)Disconnect power supply before opening
- 6)Open the upper cover and brush the powder out

2.Grinding Cautions:

It is not suitable for grinding something which is wet, fresh, soft ,strong toughness such as meat, fruits, vegetables, etc.

- 1)To grind something more easily when the material is high-hardness, big in size, or has the strong fiber, you need to cut them into small pieces, for example, to grind the notoginseng better, you need to cut them into small pieces.
- 2)For the oily items , such as peanuts, sesame, walnut, etc. You should first dry, or fried-dry them before grinding. If you just grind a small amount , usually grind for 15 seconds , then stop for 10 seconds. If you need a better grinding effect, you could do this for several times.

Notice: When you first use the machine,you'd better clean the machine with cloth moistened with vinegar or medical alcohol,and then put some rice and dried tea leaves into grinding bin,grind them for 30~50 seconds,then pour the power out, clean the grinding bin.

3. Common Questions:

* Why the grinder cannot be started?

First check whether the indicator light is on.

If the indicator light is not on, check whether the power supply is plugged in tightly and whether the power cord is damaged (you can replace the power cord of other household appliances).

If the indicator light is on, the possible reason is that the induction switch in the two buckles of the cover is not triggered yet.



Please make sure that the lid is rotated to the end and then lock the lid.



*** What to do if the grinder suddenly stops working?**

If the grinder stopped working, the reason may be that the blades bottom is stuck or the overload protector function works because of overload and the carbon brush is worn.

It's easy to solve this problem.

You just need clean the blades bottom or re-install the carbon brush on the both sides again and then press the overload protector button again, then the grinder could work well, Please see the overload protector and carbon brush in the attached pictures, please check that.

***Why the motor becomes hot ?**

It is normal for the grinding machine to be slightly heat, because the working principle of the machine is to pulverize the material into powder through the high-speed rotation of the blades. The whole process is carried out in the closed grinding bin, which will generate heat and cause the machine to heat up.

There may be several reasons for machine overheat:

1) The materials ground is wet, moisture.

Please Dry the materials as much as possible before grinding, and then grind it when it is completely cool.

2) Grinding time is too long.

The machine must take 5-10 minutes to rest after every 3 minutes of work. If you grinding some hard items, there should has a interval which is to prevent bearing overheating,

damage to the motor.

3) Put too much materials into the grinding bin one time.

The material you gonna to grind one time must cover the long blade in the middle and no more than 2/3 of the tank. Because this machine needs a space to complete the cycle of the blades and the material to be grind.

If the machine overheat makes ono-working, you can also solve it by re-installing the carbon brushes on the both sides again and then pressing the overload protector button again, then the grinder could work well.

INSTRUCTIONS OF AIR OVERLOAD PROTECTOR

When blades are jammed in grinding bin, it will happen that air overload protector pop up and the machine automatically cut off the power supply.

If this situation happens, turn off the power and check the grinding bin. You just need clean the blades bottom and press the overload protector button again, then the grinder could work well.



*** Upright type grinder:**



***Swing type grinder:**



HOW TO CLEAN UP THE GRINDING BIN

You can clean up the grinding bin of grinder with a brush first, and then clean it with dry cloth.



After using blades for a long time, you can remove them and clean them with water. (The blades of new grinder must be very tight, you need to use for a long time, then blades can be removed.)

- Firstly, loosen the nut by using a pincer and remove the blade.
- Secondly, wipe the grinding bin with a dry rag after removal of the blade, and please do not clean with water directly.

Please Note: If you clean the blades by using the wet rag or with water directly, please make sure grinding bin and the blades be dry enough before re-install the blades.

- Lastly, install the blades and tighten the nut, it is finished.

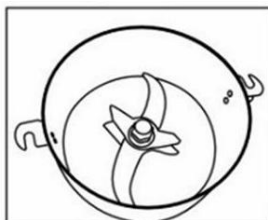
HOW TO REPLACE THE BLADE

Blade Replacement

Use the Blade replacement auxiliary tool to fix the blade, preventing it from rotation. Then rotate counterclockwise with the help of tool, loosen the hex screws on the blade, open the blade to use.



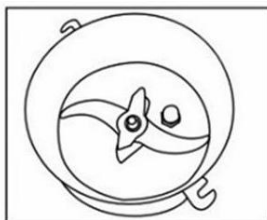
OPERATING PROCEDURES OF REPLACING BLADES



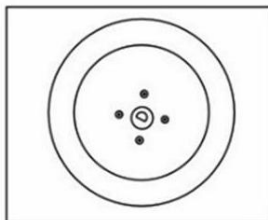
The machine has been upgraded to a three-blades one



Use a screwdriver to fix the screw under crushing warehouse, stuck the blade to prevent slipping, use a professional tool counter-clockwise to unscrew the nut



After loosening the nut, as the state is shown in the picture, remove the pad and two above blade



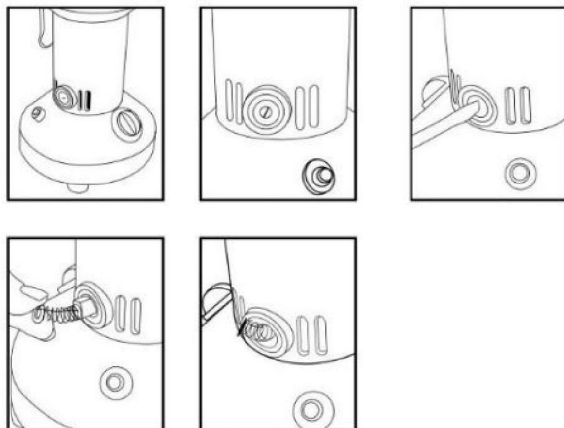
Remove the blade and install with a new one according to the original order



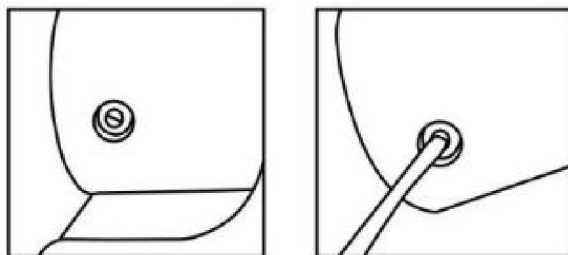
When installing the blade, you need to use a screwdriver to stuck the blade to prevent slipping and tighten it clockwise by the professional tool

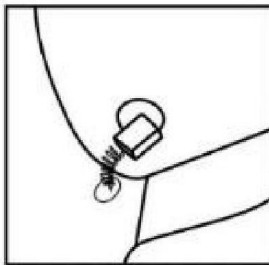
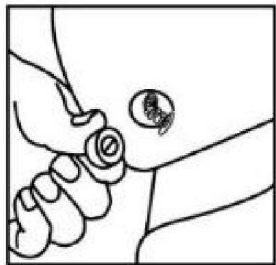
HOW TO REPLACE CARBON BRUSHES

- The upright type grinder:



- The swing type grinder:






TROUBLE SHOOTING

Trouble	Cause	Elimination method (*Please cut off the power when doing following)
The machine does not operate after power on.	Poor contact between the plug and socket.	Please plug in the power cord and check whether the power indicator lights is on. If the indicator does not light, then the power cord is faulty.
	Poor contact between the lid and induction switched.	Adjust the position of the screws on both sides of the lid in advance so that they can trigger the induction switches in the ears when close the lid.
	Air over-load protector protecting.	Press the air over-load protector to restart.
	Carbon brush ware out.	Change the carbon brush.

Motor run slowly, or not runs, even vibrates, making noise.	Stuck inside of crush cabin by material, or foreign subject.	Remove the stuck stuff.
	Low power voltage.	Insert the plug directly wall socket instead of the terminal block. Then try another place to see if the machine can be turned on.
Motor cabin over heat.	Over load capacity.	Reducing the amount of grinding and decreasing the working pressure.
	Material not dry enough.	Dry the material in the sun or bake it.
	Low power voltage.	Insert the plug directly into the wall socket instead of the terminal block. Then try another place to see if the machine can be turned on.
Spark on the carbon brush surface.	Carbon brush is not smooth.	Change the carbon brush.

ENVIRONMENTAL PROTECTION

	<p>This product is subject to the provision of European Directive 2012/19/EC. The symbol showing a wheeled bin crossed through indicates that the product requires separate refuse collection in the European Union. This applies to the product and all accessories marked with this symbol. Products marked with this symbol cannot be discarded with normal household waste but must be taken to an electrical and electronic equipment collection point for recycling.</p>
--	--

Importer: WAITCHX

Address: 250 bis boulevard Saint-Germain 75007 Paris

Importer: FREE MOOD LTD

Address: 2 Holywell Lane, London, England, EC2A 3ET



EUREP UK LTD

UNIT 2264, 100 OCK STREET, ABINGDON
OXFORDSHIRE ENGLAND OX14 5DH



EUREP GmbH

Unterlettenweg 1a, 85051
Ingolstadt, Germany

Manufacturer: Anhui Xuzhong Intelligent Technology Co., Ltd.

Address: No.23, Lantian Road, Economic Decelopment Zone, Wangjiang County, Anqing
City, Anhui Provice, China

MADE IN CHINA

VEVOR[®]

TOUGH TOOLS, HALF PRICE

TechnicalSupport and E-Warranty Certificate

<https://www.vevor.com/support>