



# **GARDEN JET PUMP**

## **INSTRUCTION MANUAL**

# VEVOR®

## GARDEN JET PUMP

EKJ-802S



### NEED HELP? CONTACT US!

Have product questions? Need technical support? Please feel free to contact us:

**[CustomerService@vevor.com](mailto:CustomerService@vevor.com)**

This is the original instructions, please read all manual instructions carefully before operating. VEVOR reserves clear interpretation of our user manual. The appearance of the product shall be subject to the product you received. Please forgive us that we won't inform you again if there is any technology or software updates on our product.

## ATTENTION

The product can be used by people aged 8 years or above. If people who have not enough physical, sensory, or mental capabilities or lack of experience and knowledge, they must know the hazards involved and be given a guideline of security use under professional supervision. Children shall not clean or maintain the appliance without supervision, let alone play with it.

### Attention!

If the appliance or the supply cord is damaged, we recommend repairing it by the manufacturer, service agent, or qualified expert.

### Meaning of Crossed -out Wheeled Dustbin:

Do not dispose of electrical appliances as unsorted municipal waste. Use separate waste collection facilities. Contact your local government for information regarding the refuse classification.



Read the instructions carefully and obey the safe operation rules.  
The operator shall take full responsibility for personal injury, pump damage, and other property losses caused by a violation of safety operation rules.

## APPLICATIONS

It is applicable to household water supply, equipment support, well water lifting, pipeline pressurization, garden watering, vegetable greenhouse watering, fish farming and poultry raising, etc. Use the pump with clean water or other non-corrosive liquids with low viscosity; do not with inflammable, explosive, gasified liquids and liquids containing solid particles or fibers. The PH of the liquids must range from 6.5 to 8.5.

### Remark:

You can reform the pump into an automatic pump due to its external auto-equipment composed of a pressure switch, a pressure tank, etc. How does it work? When the power is on, turn on the water tap, then the pump will start working automatically; when turn off the water tap, the pump will stop working automatically. Use a water tower with the automatic pump; the pump will start or stop working according to the water level in the water tower after connecting to the upper limit switch.

## IMPLEMENTATION STANDARDS

IEC/EN 60335-1 Household and similar electrical appliances--safety Part1: General requirements.

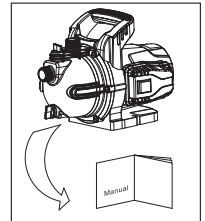
IEC/EN 60335-2-41 Household and similar electrical appliances--safety

Part2-41:Particular requirements for pump.

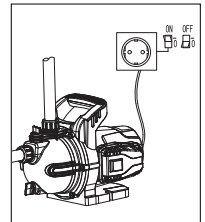
2006/42/EC Machinery directive.

## SAFETY PRECAUTIONS

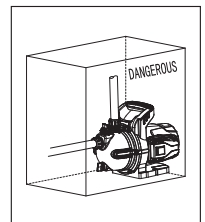
1).To ensure a normal and safe operation of the electric pump, read the manual carefully before use.



2).The electric pump should have a reliable ground connection to prevent short circuits. For safety, you'd better prepare a leakage protection switch, and take careful of not making the power plug wet. Moreover, the socket should be placed in a damp-proof area.

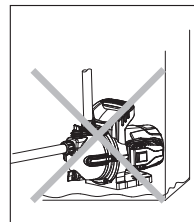


3).Do not touch the electric pump while it is working. To avoid any accidents that would happened, please do not do washing, swim, or let livestock stay near its working area.

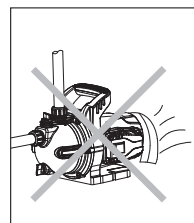




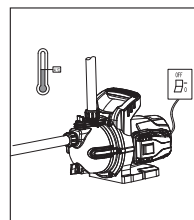
4).Please notice that do not let the water splash onto the electric pump; prevent the pump from being immersed in water.



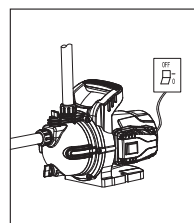
5).Keep the pump in good ventilation.



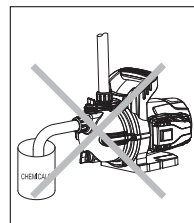
6).Once the temperature is lower than 4°C or the pump is not in use for a long time, you should empty the pipeline in case the water freezing in the pump chamber. The pump can not run without water for a long time.



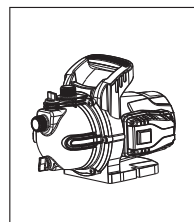
7).The liquids in the pump may be hot and under high pressure. Before moving and disassemble the pump, you have to close valves on both sides of the bump first, and then empty liquids in the pump and pipelines so as not to be scalded.



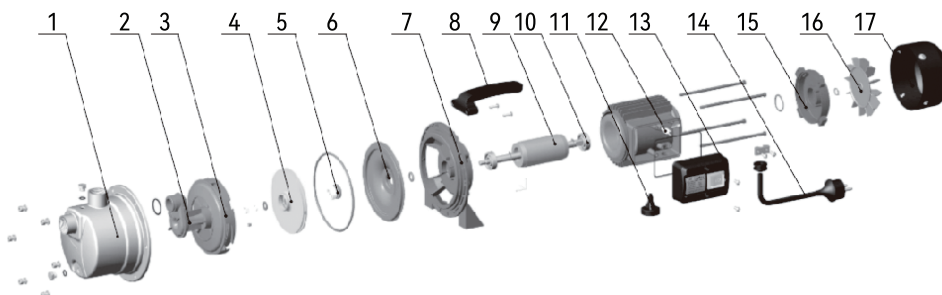
8).Do not transfer any inflammable, explosive, or gasified liquids that exceed the regulations.



9).The power supply should accord with the voltage stated in the nameplate. Keep the pump in a dry, well-ventilated, and cool place under room temperature for long-time storage.



## PRODUCT STRUCTURE

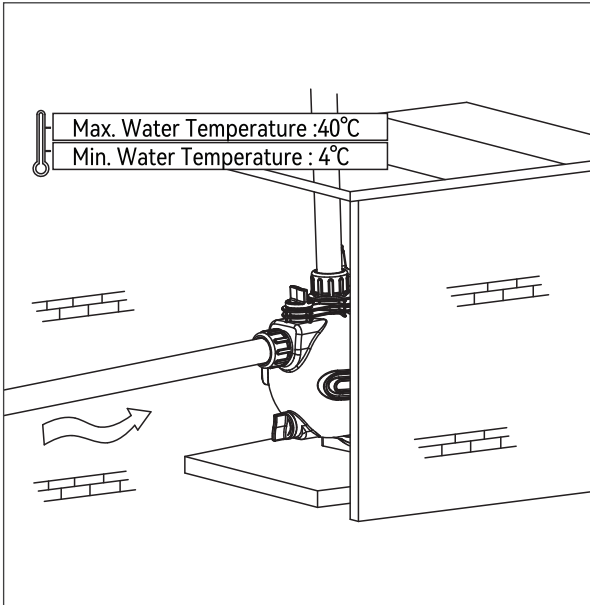


POS.	Part	POS.	Part	POS.	Part
1	Pump Body	7	Support Cover	13	Terminal Box
2	Injector	8	Handle	14	Cable
3	Diffuser	9	Rotor	15	End Plate
4	Impeller	10	Bearing	16	Fan
5	Mechanical Seal	11	Bracket	17	Fan Cover
6	Support Cover	12	Stator		

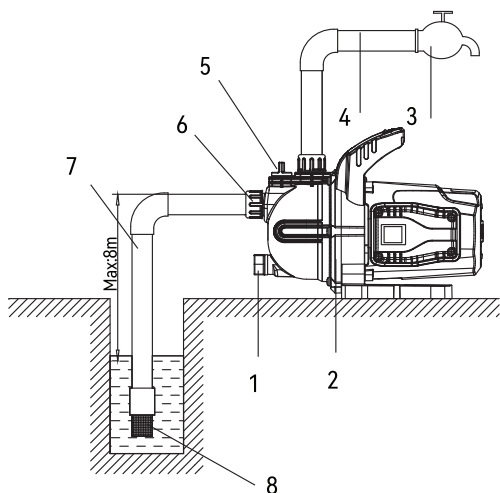
## PIPELINE INSTALLATION



This product should be installed and maintained by a person who is proficient in this user manual and has related qualifications. Installation and operation should be in accordance with local regulations and recognized operation standards. Install pipelines properly according to this manual. Meanwhile, keep the pipelines from freezing.

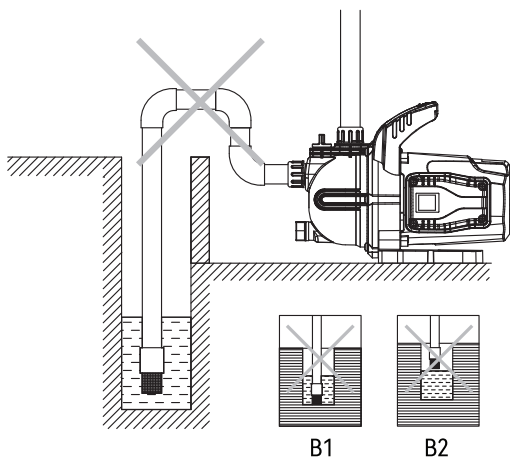


1. For pump installation, the inlet pipe should be as short as possible with the least turnings. The pump should be installed in a well-ventilated and dry environment. It could be installed outside, provided having proper covering to prevent rain and wind.
2. Valves should be installed on the inlet pipe and the outlet pipe. Also, the inlet pipe should be installed with check valve.



**Correct Installation Diagram** **A**

**Incorrect Installation Diagram** **B**



B1

B2

#### **A:**

- |                 |                |
|-----------------|----------------|
| 1.Drain Plug    | 5.Filling Plug |
| 2.Electric Pump | 6.Tie-in       |
| 3.Water Tap     | 7.Inlet Pipe   |
| 4.Outlet Pipe   | 8.Foot Valve   |

#### **B: Installation precautions for inlet pipe**

- 1).While installing the electric pump, you should not use too soft rubber tube for the inlet pipe in case to be sucked flat.
- 2).The foot valve should be vertically placed and installed at the position where is 30cm from water bottom to avoid sucking in sands and stones (B1);
- 3). Joints of the inlet pipe should be sealed with least elbows, preventing water sucked.
- 4). The diameter of the inlet pipe should be in accordance with that of the water inlet, avoiding too much water loss or poor performance of water outing.
- 5).Pay attention to the drop of water level while using, the foot valve should not be above the water surface (B2).
- 6).If the inlet pipe is longer than 10m or the lifting height exceeds 4m, the pipe diameter should be larger than that of the pump water inlet .
- 7).Make sure the pump will not be affected by pipe pressures while installing the pipes.
- 8).Filter should be installed in inlet pipelines so as to avoid solid particles to enter into the electric pump.

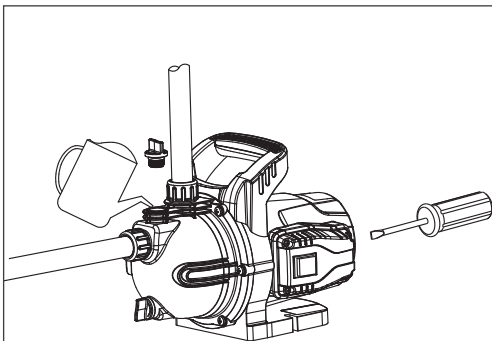
#### **C: Installation Precautions of the outlet pipe**

The diameter of the outlet pipe should be in accordance with that of the water outlet, reducing its voltage drop, high flow rate and minimizing noise.

## START-UP AND MAINTENANCE



Do not start the pump before the pump chamber is filled with water.  
Do not touch the electric pump unless its power has been cut off for at least 5 minutes.  
Do not disassemble the pump body unless water in the pump chamber is empty.



Rotate the fan blade before starting-up, check whether the pump rotation is flexible, then unscrew the water-filling plug, fill the pump chamber with clean water from the water injection hole, then tighten the plug screw after the air has been completely discharged. Set the valve for a smaller water flow when starting-up, and then adjust to your required water flow after water discharging (working range is on the nameplate).

### Attention:

- 1). The pump chamber should be filled with water before first use. No water injection is required for later use.
- 2). If there is no water discharged after being started for more than 5 minutes after water filled, turn off the electric pump, re-fill water or check whether the inlet pipeline has leakages.
- 3). If there is any frost damages, please open the drain plug to empty water in the pump chamber. When start up the pump again, open the drain plug, fill water and tighten it. Make sure the there is no water in the pump when it is not in use for a long time.
- 4). The pump body, impeller and support should be cleaned and coated with anti-corrosive oil, then use them in a well-ventilated and dry place.
- 5). If the pump stops working for a long time, restart it according to the above diagram.
- 6). In summer or when the temperature is high, you should make sure that the pump has good ventilation, keeping dew from electrical parts resulting in electrical faults.
- 7). If the motor is hot or abnormal, cut off the power immediately and check faults according to the following table.

## TROUBLESHOOTING



Check the pump after power cut-off.

Symptom	Cause	Corrective Action
The motor can not be started	Single-phase power supply (three-phase electric motor): a.Poor connection of the power switch; b.The fuse is burned out; c.The power lead is loose; d.A phase failure of the cable.	a.Repair switch contact or replace the switch; b.Replace the safety fuse; c.Check and tighten the power connector; Repair or replace cables.
	The capacitor is burned out.	Replace with the same type of capacitor (send to the maintenance center for repair).
	The rotating shaft and bearing are jammed.	Replace the bearing (send to the maintenance center for repair).
	The impeller is jammed.	Turn the rotating shaft of the fan blade terminal with a screwdriver to let it rotate flexibly or disassemble the pump to clear sundries.
	The stator winding is damaged.	Replace winding coils (send to the maintenance center for repair).
The motor is in operation, but no water is discharged	Incorrect direction of pump rotation.	Invert two-phase wires of the motor (three-phase motor).
	The pump is not fully filled with water.	Re-fill the pump with enough water.
	The impeller is damaged.	Replace the impeller (send to the maintenance center for repair).
	Leakage of the suction pipe.	Check to seal various joints of the inlet pipelines.
	Water level is too low.	Adjust installation height of the pump.
	The freeze is caused by water accumulation in the pipeline or the chamber.	Start up the pump after ice is melted.
	Hot water result in the failure of plastic parts.	Replace the damaged parts (send to the maintenance center for repair).
Pressure Insufficient	Incorrect pump type.	Select a suitable pump.
	The inlet pipeline is too long or with too many bends, or pipe diameter is not selected as required.	Use a pipe with the standard diameter, and make the inlet pipe shorter.
	The Inlet pipeline, filter, or pump chamber is blocked by impurities.	Clean pipeline, foot valve or pump chamber, remove impurities.

Motor works intermittently or the stator winding is burned out	The Inlet pipeline, filter, or pump chamber is blocked by impurities.	Clear foreign materials in the pump chamber; operate the pump under the rated flow.
	Incorrect grounding, broken cable or the electric pump is struck by lightning.	Properly grounded, replace the broken cable , and replace winding coils.

## TECHNICAL DATA

Type	Stainless Steel Jet Pump
Model	EKJ-802S
Nominal voltage	220-240V ~ , 50Hz
Rated Power	800W
Max.Head	40m
Max.Flow	3.7m³/h
Max.Suction Depth	7m
Outlet/Inlet	1"*1"
Electric Protection Class	IPX4
Max.liquid temperature	35°C

EC REP: EUREP GmbH      Unterlettenweg 1a, 85051 Ingolstadt  
Germanyeurep@eurep-gmbh.com      +49 841 8869 7744

Importer: WAITCHX  
Address: 250 bis boulevard Saint-Germain 75007 Paris

**E-mail: CustomerService@vevor.com**

Manufacturer: Leo Group Pump(Zhejiang) Co., Ltd.  
Add: NO.1, 3rd Street, East Industry Center, Wenling 317500 Zhejiang P.R. China.

Made in China

**VEVOR<sup>®</sup>**

E-mail: [CustomerService@vevor.com](mailto:CustomerService@vevor.com)