

VEVOR[®]

TOUGH TOOLS, HALF PRICE

Technical Support and E-Warranty Certificate

www.vevor.com/support

METAL SHEAR ATTACHMENT USER MANUAL

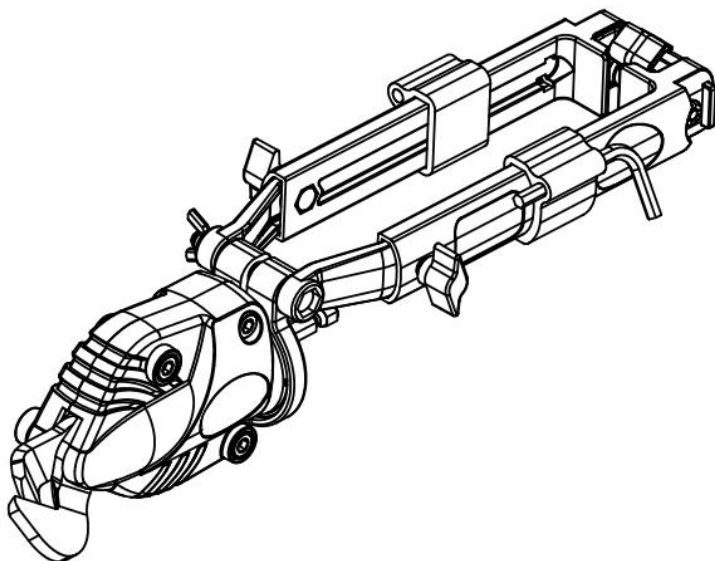
We continue to be committed to offering tools at competitive prices. "Save Half", "Half Price", or any other similar expressions used by us only represent an estimate of savings you might benefit from buying certain tools with us compared to the major top brands and do not necessarily mean to cover all categories of tools offered by us. You are kindly reminded to verify carefully when placing an order with us if you are saving half in comparison with the top major brands.

VEVOR®

TOUGH TOOLS, HALF PRICE

METAL SHEAR ATTACHMENT

DR12



NEED HELP? CONTACT US!

Have product questions? Need technical support? Please feel free to contact us:

✉ CustomerService@vevor.com

This is the original instruction, please read all manual instructions carefully before operating. VEVOR reserves a clear interpretation of our user manual. The appearance of the product shall be subject to the product you received. Please forgive us that we won't inform you again if there are any technology or software updates on our product.



The symbols used in this manual are intended to alert you of the possible risks. Please fully read the safety signs and instructions below. The warning themselves do not prevent the risks and can not be a substitute for proper methods of avoiding accidents.



This symbol, placed before a safety comment, indicates a kind of precaution, warning, or danger. Ignoring this warning may lead to an accident. To reduce the risk of injury, fire, or electrocution, please always follow the recommendations shown below.



Warning- To reduce the risk of injury, users must read the instruction manual carefully.

Please refer to the appropriate section in this user manual before any operation.



Warning- Be sure to wear eye protectors when using this product.



Warning- Be sure to wear dust masks when using this product.



Warning- Be sure to wear ear protectors when using this product.

PRODUCT SPECIFICATIONS

METAL SHEAR ATTACHMENT	
Model	DR12
Blade Material	ADC12
Max Gauge	18GA
Shank Size	1/4"Hex
Materials to cut	Sheet metal, corrugated sheet metal, duct, asphalt shingle, steel mesh, vinyl siding, wire, plastics, cardboard, and rubber
Cutting capacity	0.8mm Stainless Steel, 1.2mm Galvanized Steel 2.0mm Aluminum plate

METAL SHEAR ATTACHMENT



WARNING:

READ AND UNDERSTAND THESE INSTRUCTIONS and the instructions for the power tool used with this product.

FAILURE TO FOLLOW all instructions listed may result in electric shock, fire and/or serious personal injury.

CAUTION-HAZARD-Never have any part of your body near the blades or moving parts of the power tool. Serious personal injury may occur.

- Before use, ensure the shear attachment is properly attached to the tool.
- Turn the tool OFF and/or disconnect the battery pack before installing and removing accessories, before adjusting or when making repairs.
- To prevent accidental operation, lock the trigger switch in the OFF position when the tool is not in use or when storing the tool.
- DO NOT sharpen blades. DO NOT use the shear with any kind of accessory or attachment.
- Wear gloves when handling sheet metal. The edges are sharp and can cause serious personal injury. For best results, always clamp or anchor the material

to be cut.

DO NOT use under wet conditions or in the presence of flammable liquids or gases.

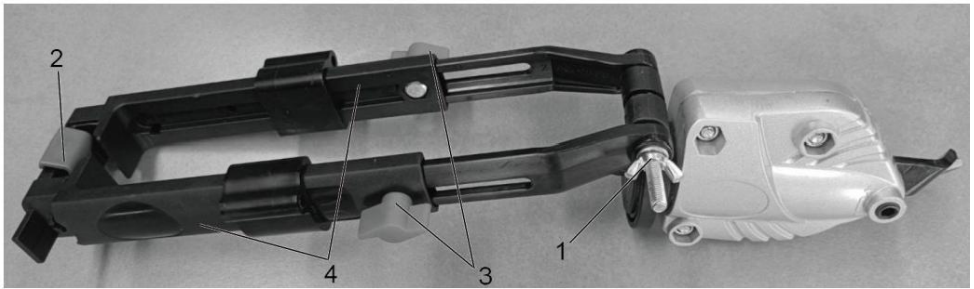
DO NOT let children come into contact with the shear. Supervision is required when inexperienced operators use this tool.

DO NOT hold the shear attachment as a primary gripping surface.

- Make sure the power tool is set to the “forward” (clockwise) direction before use.
- Hold the power tool on insulated gripping surfaces (if a drill use both hands). The shear contacting a live wire may make exposed metal parts of the shear and the power tool “live” and could give the operator an electric shock.
- AVOID body contact with earthed or grounded surfaces, such as pipes and appliances. There is an increased risk of electric shock if your body is earthed or grounded.
- DO NOT use solvents or other harsh chemicals to clean the shear’s non-metallic parts. These chemicals may weaken the plastic materials used in these parts. Use the cloth dampened only with water and mild soap.
- DO NOT let any liquid get inside the shear or immerse any part of the shear into a liquid.

INSTALLING & OPERATING

1. Insert the shank end of the shears into the nose of the impact driver, or chuck, if using a drill. Tighten chuck securely.
2. Pivot telescoping clamp toward the back of tool and adjust the clamp (both width and length) to fit securely on the tool.
 - a. Adjust the width by turning the nut (1) located on the left side of the clamp. Rotate the nut clockwise/ counter-clockwise to reduce/increase the width.

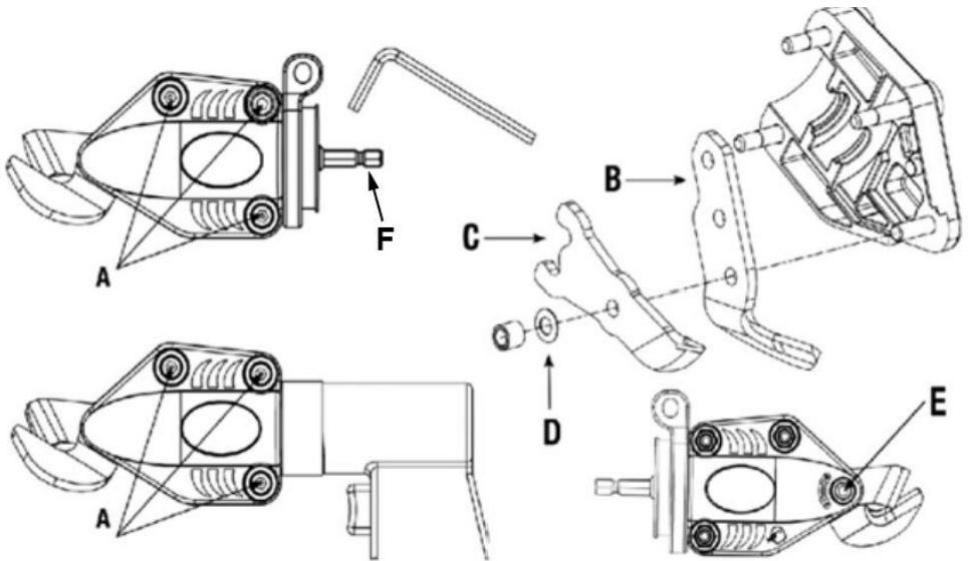


b. Rotate the knobs(3)on both sides to loosen the clamp. Then adjust the length of the clamp by pulling or pushing on the length adjustinglever (4) of the telescoping clamp.

c. Lock at the desired length/width by pushing the lock(2)located at the end of the telescoping clamp.

3.Ensure the shear is secure on the tool.

REPLACING BLADES



1. Use the 5mm hex key provided to remove the three hexagon screws (A)holding the casing together.

2. Separate the casings.

NOTE: There is grease in casing

3. Remove the blades. Be sure to keep the reusable washer(D).

4. Place new lower blade(B) onto casing as shown in drawing above.

5. Apply a thin layer of grease(not provided) on side of lower blade(B).

6. Place new upper blade(C) into casing.

NOTE: When replacing the washer(D), reinstall convex up and under upper blade(C)

7. Apply a liberal amount of grease(not supplied) to the space between the driveshaft(F) and upper blade(C).

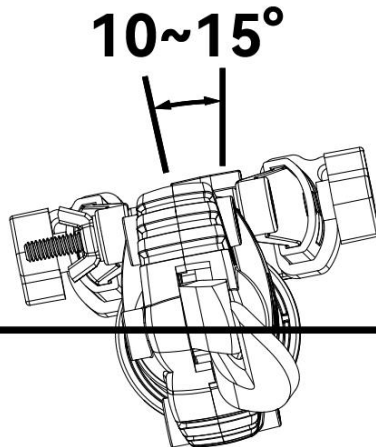
8. Reassemble casings and screws(E).

9. Use the 5mm hex key provided to tighten the hexagon screws to ensure proper cutting performance.

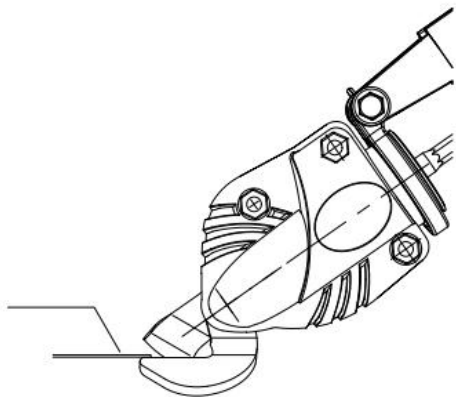
Note when cutting

1. Adjust your shear within 10-15 degrees when cutting for a smoother cutting,

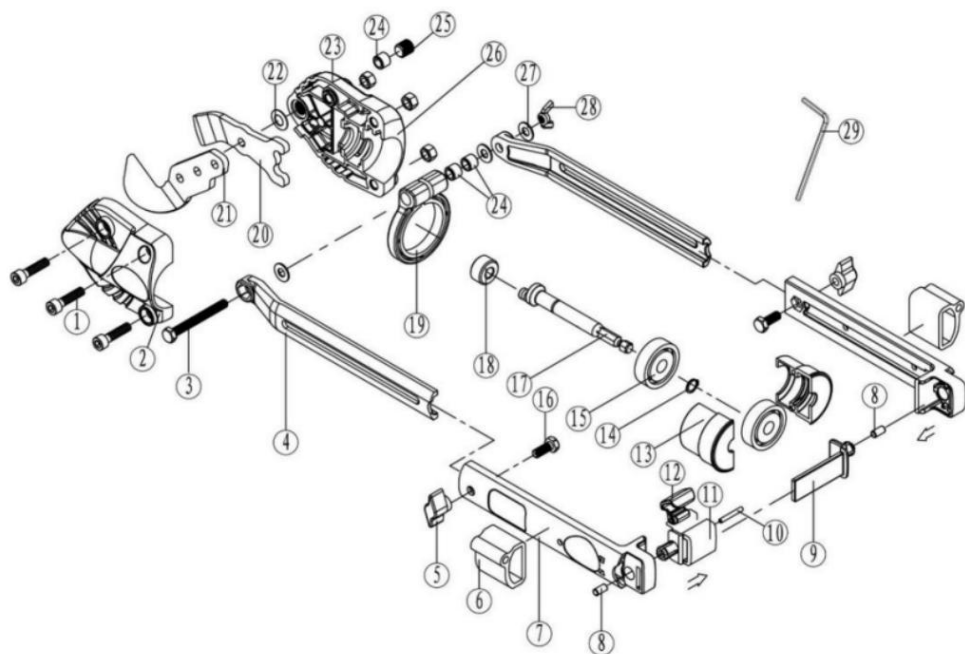
2. To better protect your blade, try to keep the item at a stable position instead of twisting it all the time, or the blade may be broken easily. Pls see the fig below.



3. When cutting, try to parallel the material to be cut with the fixed blade (No. 21 in the diagram)



EXPLODED VIEW



PARTS LIST

WARNING!

When servicing, use only original equipment replacement parts. The use of any other parts may create a safety hazard or cause damage to the tool. Any attempt to repair or replace electrical parts on this tool may create a safety hazard unless a qualified technician performs repairs.

Key#	Part Name	Qty
1	Inner hexagon head screw	3
2	Gear box cover	1
3	hexagon head bolts	1
4	Length adjusting lever	2
5	Knob	2
6	Hexagon wrench fixing sleeve	2
7	Connecting link	2
8	Rubber plug	2
9	Locking bracket	1
10	Parallel pins	1
11	Width adjusting bracket	1
12	Locking buckle	1
13	Gear Box	2
14	Check Ring	1
15	Ball bearing	1
16	hexagon head bolts	2
17	Output shaft	1
18	Trolley	1
19	Hose clamps	1

20	Movable blade	1
21	Fixed blade	1
22	Washer	1
23	Gear box	1
24	inner bushing	3
25	Knob	1
26	Prevailling torque type hexagon nut	3
27	Washer	3
28	Nut	1
29	Hex key	1

Address: Baoshanqu Shuangchenglu 803long 11hao 1602A-1609shi Shanghai
Imported to AUS: SIHAO PTY LTD, 1 ROKEVA STREET EASTWOOD NSW 2122
Australia
Imported to USA: VEVOR STORE INC, 9448 RINCHMOND PL #E
RANCHO CUCAMONGA, California, 91730 United States of America



SHUNSHUN GmbH
Römeräcker 9 Z2021,76351 Linkenheim-Hochstetten,
Germany



Pooledas Group Ltd
Unit 5 Albert Edward House, The Pavilions Preston,
United Kingdom

VEVOR[®]

TOUGH TOOLS, HALF PRICE

Technical Support and E-Warranty Certificate

www.vevor.com/support