

VEVOR[®]

TOUGH TOOLS, HALF PRICE

Technical Support and E-Warranty Certificate www.vevor.com/support

GRINDER

USER MANUAL

MODEL: MFS-140

We continue to be committed to provide you tools with competitive price.

"Save Half", "Half Price" or any other similar expressions used by us only represents an estimate of savings you might benefit from buying certain tools with us compared to the major top brands and does not necessarily mean to cover all categories of tools offered by us. You are kindly reminded to verify carefully when you are placing an order with us if you are actually saving half in comparison with the top major brands.

MFS-140



NEED HELP? CONTACT US!

Have product questions? Need technical support? Please feel free to contact us:

 [**CustomerService@vevor.com**](mailto:CustomerService@vevor.com)

This is the original instruction, please read all manual instructions carefully before operating. VEVOR reserves a clear interpretation of our user manual. The appearance of the product shall be subject to the product you received. Please forgive us that we won't inform you again if there are any technology or software updates on our product.

Note: Before beginning assembly of product, make sure all parts are present. Compare parts with package content list and hardware contents. Do not attempt to assemble the unit if any parts are missing or damaged.

Contact customer service for replacement parts.



SAFETY INSTRUCTIONS



WARNING: Read all safety warnings, instructions, illustrations and specifications provided with this Grinder. Failure to follow all instructions listed below may result in electric shock, fire and/or serious injury.

SAVE THIS INSTRUCTION!

	Warning - To reduce the risk of injury, user must read instructions manual carefully.
	Alternating current
	This symbol, placed before a safety comment, indicates a kind of precaution, warning, or danger. Ignoring this warning may lead to an accident. To reduce the risk of injury, fire, or electrocution, please always follow the recommendation shown below.
	Danger! Risk of personal injury or environmental damage! Risk of electric shock! Risk of personal injury by electric shock!
	Warning- Be sure to wear ear protectors when using this product.
	Warning- Be sure to wear eye protectors when using this product.
	Warning- Be sure to wear gloves when using this product.

	Protective earth
	<p>Disposal information:</p> <p>This product is subject to the provision of European Directive 2012/19/EC. The symbol showing a wheeled bin crossed through indicates that the product requires separate refuse collection in the European Union. This applies to the product and all accessories marked with this symbol.</p> <p>Products marked as such may not be discarded with normal domestic waste, but must be taken to a collection point for recycling electrical and electronic devices</p>

1.READ ALL OPERATING INSTRUCTIONS AND PRODUCT SAFETY LABELS! FAILURE TO FOLLOW ALL INSTRUCTIONS MAY RESULT IN SERIOUS INJURY OR PROPERTY DAMAGE!

2.CHECK FOR DAMAGED PARTS: Before using the grinder, check whether all parts work normally and perform the expected functions. Check for alignment, binding and installation of moving parts. and any other conditions that may affect the operation. If any parts, the Power Cord or the Grinder are damaged, call the Customer Service number shown in this manual.

3.Always unplug power cord from outlet when not in use, before putting on or taking off parts or accessories, and before cleaning. After unplugging the unit, turn power switch ON, then OFF to ensure that all power has been discharged from the grinder.

4.This appliance can be used by children aged from 8 years and above and persons with reduced physical, sensory or mental capabilities or lack of experience and knowledge if they have been given supervision or instruction concerning use of the appliance in a safe way and understand the hazards involved. Children shall not play with the appliance. Cleaning and user maintenance shall not be made by children without supervision.

5.NEVER LEAVE GRINDER UNATTENDED WHILE IT IS RUNNING!

6.Wait until all moving parts have stopped and turn off power before removing any part from the grinder.

7.DO NOT use outdoors, this product is intended for INDOOR USE ONLY.

8.DO NOT pull the power cord to disconnect.

9. DO NOT USE WITH EXTENSION CORD. Always plug directly into a grounded wall receptacle.
10. This grinder uses a grounded, three prong plug (hot, neutral and ground), the grounding plug is used for electrical appliances with metal shell to prevent electric shock. DO NOT change or alter the plug in any way. NEVER break off a grounding prong from a 3-- conductor plug. Doing so will invalidate the warranty and may cause electric shock.
11. Place the grinder on a firm and stable surface. Ensure that the grinder is not placed near the edge of the worktop, where it can be easily pushed off or fall.
12. The Gear Housing and the Motor Cover may become HOT during operation. This is normal. DO NOT TOUCH these parts while operating.
13. To reduce the risk of unintentional starting, check that the control is OFF before plugging the cord into wall outlet. To disconnect, turn the controller to OFF, then remove plug from wall outlet.
14. DO NOT operate your grinder under a wall cabinet. Always unplug the unit from the electrical outlet when storing it. Not doing so could create a risk of fire, especially if the appliance touches the walls of the garage or the door touches the unit as it closes.
15. NEVER plug the grinder in where water may flood the area.
16. To protect against risk of electrical shock, DO NOT submerge the grinder in water or other liquids. Be sure the grinder is disconnected from the power source before cleaning. NEVER rinse the Grinder Motor under running water, only use a moist cloth to clean the Grinder Motor Unit.
17. The use of attachments or parts not specifically recommended or sold by the manufacturer for this grinder will void the warranty and may cause fire, electric shock or injury.
18. The Manufacturer disclaims any responsibility in the case of improper use of Grinder. Improper use of the Grinder voids the warranty.
19. DO NOT REMOVE WARNING LABELS FROM THE GRINDER. Doing so will void the product warranty and may result in serious personal injury.
20. This appliance must be grounded while in use to protect the operator from electrical shock. This grinder uses a grounded, three prong plug that should be connected directly to a grounded 120V(US)/230V(EC), three prong grounded wall outlet receptacle. Grounded plugs are used on metal-encased electric appliances in order to provide protection from an electric shock. DO NOT change or alter the plug in anyway. NEVER break off a grounding prong from a 3-conductor plug. Doing so voids the warranty and may result in electric

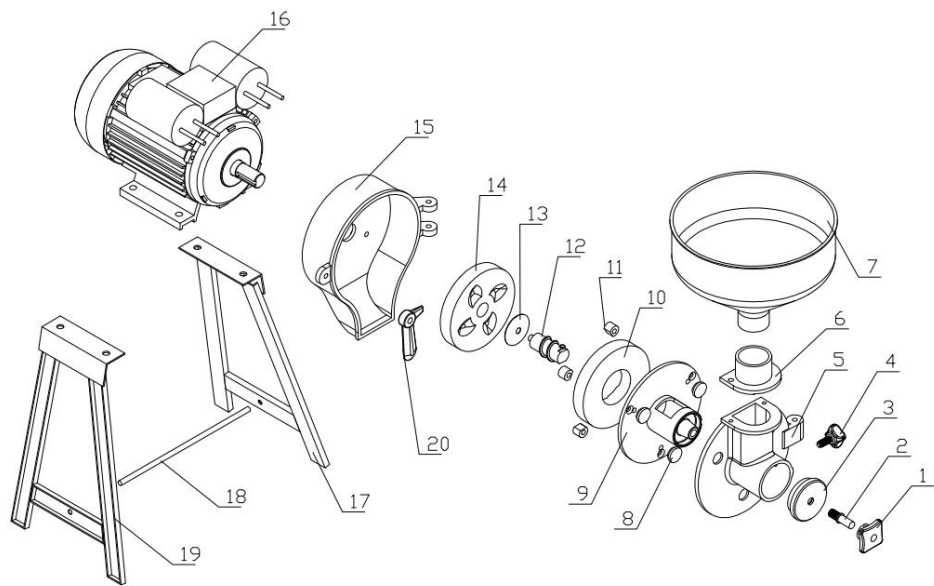
shock.

21.Type X attachment: If the supply cord is damaged, it must be replaced by a special cord or assembly available from the manufacturer or its service agent.

TECHNICAL PARAMETER

MODEL	RATINGS		Continuous working time	Capacity
MFS-140	110V/60Hz	1500W	1hour	≥45kg/hour
	230V/50Hz			

PRODUCT STRUCTURE



NO.	Name	Quantity
1	Adjusting handle	1

2	Regulating screw	1
3	Plugging plug	1
4	Screw	1
5	Head cover	1
6	Hopper base	1
7	Hopper	1
8	Dust cover	1
9	Millstone base	1
10	Stationary grinding plate	Dry grinding plate*1 Wet grinding plate*1
11	Latch	2
12	Worm	1
13	Shim	1
14	Moving grinding plate	Dry grinding plate*1 Wet grinding plate*1
15	Hood	1
16	Motor	1
17	Support frame(R)	1
18	Support rod	1
19	Support frame(L)	1
20	Fastening handle	1

OPERATING INSTRUCTION

1. Install and fix the machine;
2. Turn on the power to run the machine;

3. Containers placed at the outlet;
4. Place the ingredients to be processed in the funnel;
5. Turn the adjusting handle to adjust the thickness of the ground ingredients.

ENVIRONMENTAL PROTECTION



This product is subject to the provision of European Directive 2012/19/EC. The symbol showing a wheeled bin crossed through indicates that the product requires separate refuse collection in the European Union. This applies to the product and all accessories marked with this symbol. Products marked with this symbol cannot be discarded with normal household waste but must be taken to an electrical and electronic equipment collection point for recycling.

Importer: WAITCHX

Address: 250 bis boulevard Saint-Germain 75007 Paris

Importer: FREE MOOD LTD

Address: 2 Holywell Lane, London, England, EC2A 3ET

UK

REP

EUREP UK LTD
UNIT 2264, 100 OCK STREET, ABINGDON
OXFORDSHIRE ENGLAND OX14 5DH

EC

REP

EUREP GmbH
Unterlettenweg 1a, 85051
Ingolstadt, Germany

Manufacturer: Anhui Xuzhong Intelligent Technology Co., Ltd.

Address: No.23,Lantian Road,Economic Decelopment Zone,Wangjiang County,Anqing
City,Anhui Provice,China

MADE IN CHINA

VEVOR[®]

TOUGH TOOLS, HALF PRICE

TechnicalSupport and E-Warranty Certificate

<https://www.vevor.com/support>