

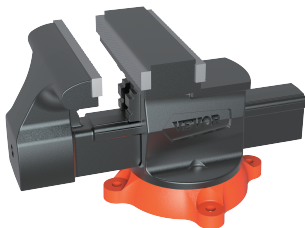
VEVOR[®]

**Bench Vice
Operating Instruction**
6.5inch Mechanic Bench Vice
Model: 9527

VEVOR[®]

E-mail: CustomerService@vevor.com

Model: 9527

**NEED HELP? CONTACT US!**

Have product questions? Need technical support?
Please feel free to contact us:

✉ CustomerService@vevor.com

This is the original instruction, please read all manual instructions carefully before operating. VEVOR reserves a clear interpretation of our user manual. The appearance of the product shall be subject to the product you received. Please forgive us that we won't inform you again if there are any technology or software updates on our product.

SPECIFICATIONS

Model:	9527
Designation:	6.5inch Mechanic Bench Vice
Material:	Ductile Iron
Overallsize:	365*165*189mm
Baking width:	167mm
Maximum opening:	Forward direction 165mm, Opposite direction 235mm
Maximum clamping force:	20KN
Color:	Grey+Orange
Weight:	About 13.7kg

DESCRIPTION

Solid Ductile iron
Rotation table 360° rotation
Suitable for installation on the table.

PACKAGE

1 x Bench Vice Table Top Clamp Press
1 x User Manual
4 x Nuts
4 x Screws
1 x Base mount paperboard
1 x Mat nylon clamp mouth pad

APPLICATION

Bench vice is used to clamp workpieces. It is installed on the work stations to clamp the workpieces. It is an necessary tool in the schlosserei. Rotating disc type clamp body can revolve so that make the workpiece rotate to the suitable place. Most work of fitter are finished on the bench vice. For example, the saw, the file, the chisel and components in stalling and dismantling.

INSTALLATION**Install the pliers on the clamp table**

- Operating instruction
The height of operator working will be suitable because the bench vice is installed on the work bench. Usually the jaw height is flushed with elbow just right. This is ok. Put the elbow on the bench vice peak and half clenched fists that the fist just support the mandible. Length and width of work bench will be decided by the work.
- Cautions
 - Appropriate degree of tightness when clamp the workpiece. Just tight the hand shank by the hand only. Do not add strength with the help of other tools. No clamp-holding force shall be exceeded.
 - When work strongly, you need try your best to make strength facing to clamp body.
 - Do not knocking on the clamp body and smooth surface.
 - Clean and lubricate the surface of lead screw and nut so that it will not rust.

Manufacturer:WEIFANG JINTAILAI BENCH VISE
MANUFACTURING CO.,LTD
Address:TA ER BAO INDUSTRIAL PARK,CHANGYI CITY,
SHANDONG,CHINA

Importer: WAITCHX
Address: 250 bis boulevard Saint-Germain 75007 Paris
Importer: FREE MOOD LTD
Address: 2 Holywell Lane, London, England, EC2A 3ET

EC REP EUREP GmbH
Unterlettenweg 1a, 85051 Ingolstadt,
Germany

UK REP EUREP UK LTD
UNIT 2264, 100 OCK STREET, ABINGDON
OXFORDSHIRE ENGLAND OX14 5DH

Made in china