

VEVOR[®]

**INSTRUCTION FOR
WORKBENCH**

VEVOR[®]

WORKBENCH ET-30-30

ET-30-30



NEED HELP? CONTACT US!

Have product questions? Need technical support?
Please feel free to contact us:



CustomerService@vevor.com

This is the original instruction, Please read all manual instructions carefully before operating. VEVOR reserves clear interpretation of our user manual. The appearance of the product shall be subject to the product you received. Please forgive us that we won't inform you again if there is any technology or software updates on our product.

NAMES OF PARTS

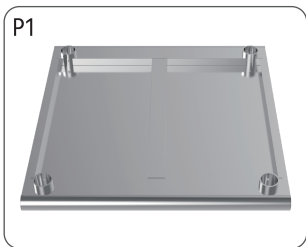
- ① Panel
- ② Shelves
- ③ Round tube
- ④ Collar
- ⑤ Mounting sleeve
- ⑥ Supporting feet



PARTS LIST

• This product is easy to install, just follow the steps Open the package to get components: 1 panel, 1 shelf, 4 round tubes, 4 mounting sleeves, 4 supporting feet, 4 casters, 8 M8 bolts, 1 Allen key.

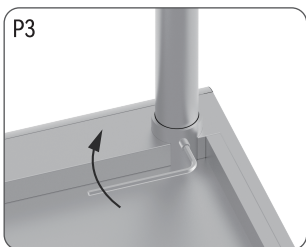
• Invert the panel on a flat surface, insert the four circular tubes into the collars, then insert the four collars on the shelf into the circular tubes, adjust the four corners of the shelf to the same height, and then lock the shelf and panel Finally, press the installation sleeve into the round tube, and screw the support feet (or casters) into the installation sleeve to complete the installation.



The shelves are placed at the same height according to the drawn line



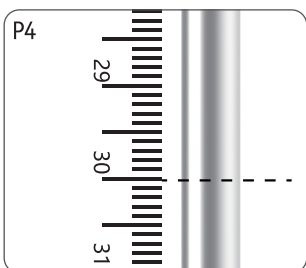
Twist the shelf bolts
Torque is greater than or equal to 25 N•m



Twist the upper panel bolts



Press the mounting sleeve into the round tube



Use a ruler to set the height and mark it



Attach the support feet (or casters)

After the installation is complete, adjust the height of the four support feet (or casters) to ensure that the four feet of the workbench are close to the ground and the table cannot be shaken.

PRECAUTIONS

Precautions:

- Some models of workbenches are equipped with casters. After replacing the casters, if the workbench does not need to move, please step on the brakes on the casters to ensure that the workbench will not move when pushed.
- Each workbench has a maximum weight limit, please be careful not to exceed the maximum weight when using it.

UK Importer: FREE MOOD LTD

Address: 2 Holywell Lane, London, England, EC2A 3ET

EU Importer: WAITCHX

Address: 250 bis boulevard Saint-Germain 75007 Paris

Manufacturer: DEA General Aviation Holding Co.,Ltd.

Address: Gongye Ave west, Songxia Industrial Park, Songgang, Nanhai, Foshan, Guangdong, China

VEVOR[®]

E-mail: CustomerService@vevor.com