

VEVOR[®]

TOUGH TOOLS, HALF PRICE

Technical Support and E-Warranty Certificate
www.vevor.com/support

INCUBATOR USER MANUAL

We continue to be committed to provide you tools with competitive price. "Save Half", "Half Price" or any other similar expressions used by us only represents an estimate of savings you might benefit from buying certain tools with us compared to the major top brands and does not necessarily mean to cover all categories of tools offered by us. You are kindly reminded to verify carefully when you are placing an order with us if you are actually saving half in comparison with the top major brands.

VEVOR[®]

TOUGH TOOLS, HALF PRICE

INCUBATOR

NLF64-5280



NEED HELP? CONTACT US!

Have product questions? Need technical support? Please feel free to contact us:

Technical Support and E-Warranty Certificate
www.vevor.com/support

This is the original instruction, please read all manual instructions carefully before operating. VEVOR reserves a clear interpretation of our user manual. The appearance of the product shall be subject to the product you received. Please forgive us that we won't inform you again if there are any technology or software updates on our product.

IMPORTANT SAFEGUARDS



WARNING: Read all safety warnings, instructions, illustrations and specifications provided with this electrical appliance. Failure to follow all instructions listed below may result in electric shock, fire and/or serious injury.

1. This product is connected to the power supply through an adapter.
2. Do not use this product in areas where it may be exposed to water or other liquids.
3. Unplug this product from the wall outlet before cleaning. Do not use liquid or aerosol cleaners. Use a damp cloth for cleaning.
4. To reduce the risk of electric shock, do not disassemble this product. Take it to qualified service personnel when service or repair work is required. Opening or removing adapter covers -like the rear cover plate- may expose you to dangerous voltages or other risks. If the cover is damaged, the adapter may no longer be used.
5. Do not operate the unit in areas with high temperatures or high humidity since it may prevent it from working correctly.
6. This appliance can be used by children aged 8 years and above and persons with reduced physical, sensory or mental capabilities or lack of experience and knowledge if they have been given supervision or instruction concerning the use of the appliance in a safe way and understand the hazards involved.
7. Children shall not play with the appliance.
8. Cleaning and user maintenance shall not be made by children without supervision.
9. For indoor use only.

SAVE THESE INSTRUCTIONS

Main technical indexes

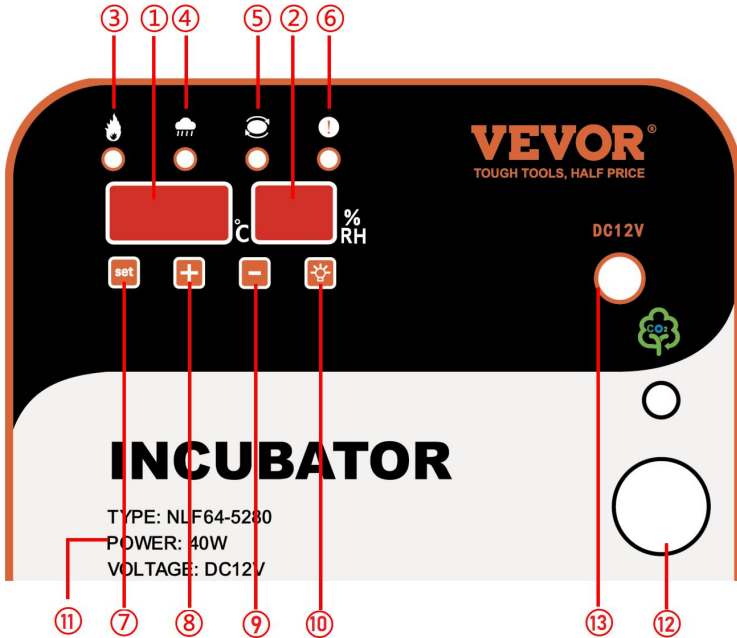
Temperature measuring range	0 ~ 50.0 °C
Temperature measuring accuracy	0.1 °C
Humidity measuring range	0-99% RH
Humidity control accuracy	± 4% RH
<p>FCC statement: This device complies with Part 15 of the FCC Rules. Operation is subject to the following two conditions: (1) This device may not cause harmful interference, and (2) this device must accept any interference received, including interference that may cause undesired operation.</p>	

Operation Conditions

Operating voltage	AC 105V ~ 235V, 50HZ
Relative humidity	Less than 85% RH
Ambient temperature	-10 °C ~ 35 °C

Screen Settings

Introduction of the display screen



1. Temperature display screen
2. Humidity display screen
3. Heating indicator
4. Humidification indicator
5. Egg turning indicator light
6. Alarm light
7. Setting key
8. “+” key
9. “-” key
10. Egg candler key
11. Parameter description
12. Observe the egg area
13. DC12V interface

1- Setting method of temperature and humidity

- Temperature setting method: Under normal working conditions, press the "Setting" button to enter the temperature setting.

- At this time, the temperature display flashes. Press "+" or "-" can adjust the temperature.

After the adjustment is completed, press the "Set" button to save the temperature setting. At this time, the screen will display all "8" to indicate that the parameter setting is successful and automatically enter the humidity parameter setting;

- At this time, the humidity display flashes, click "+" or The "-" flashing value will increase or decrease accordingly until you reach the humidity value you need.

- After the adjustment is completed, press the "Set" button to save the humidity. At this time, all "8" is displayed on the screen, indicating that the parameter setting is successful.

Note: Long press "+" or "-" to quickly increase or decrease the value;

2- Setting methods of temperature and humidity-related parameters, egg turning cycle, egg turning time, and days of incubation



**Please use this function with caution,
it is not suggested to adjust under normal circumstances.**

- Under normal working conditions, press the " Setting" key (about 5 seconds) to enter the temperature and humidity-related parameters, egg turning cycle, egg turning time, and incubation days setting. The humidity display shows the code "P1", and temperature display Flashing. Click on the "+" or "-" flashing value to increase or decrease accordingly until you need the P1 high-temperature alarm value parameter.

- After adjustment, press the " Setting " key to save the high-temperature alarm parameter settings and automatically enter the "P2" heating upper limit Value setting. The meaning and code of all parameters are shown in the following table:

Parameter code	Parameter meaning	Factory default data	Parameter description
P1	High temperature alarm value	38.8°C	Measure the temperature to reach the value alarm
P2	Low temperature alarm value	36.5°C	Measure the temperature to reach the value alarm
H1	High humidity alarm value	85%RH	Measure humidity to reach the value alarm
H2	Low humidity alarm value	30%RH	Measure humidity to reach the value alarm
F1	Egg rotation cycle	90 minutes	Turn the egg motor once every 90 minutes
F2	Turning operation time	200econds	The turning time of the egg turning motor
F3	Temperature calibration	0. 0°C	Adjustment after comparison with standard thermometer
F4	Humidity calibration	0%RH	Adjustment after comparing with a standard hygrometer
F5	Incubation days	1	Total incubation time

After all the associated parameters have been set, then press the " Temperature setting key " button to exit.

Note: the machine configuration sensor is more accurate than the market's ordinary thermometer, and generally no deviation occurs. Please make sure that the deviation is indeed to be adjusted. Even if the adjustment should not be adjusted too large, otherwise it may have an impact on hatching.

3- Manual egg-turning operation:

Under normal display state, pressing the "+" button can achieve manual egg turning.

4- Alarm sound off:

Under normal display conditions, when the instrument detects temperature or humidity abnormally, the instrument will send a "drop, drop, drop..." alarm sound. At this time, you can click the "-" key to lift the alarm sound. Under normal circumstances, the humidity alarm is not significant. If the temperature is alarming, please find the reason in time.

5- Restore factory settings:

Restore the factory settings in the normal working state while holding the "+" - "key" for about 8 seconds until all the screen display "8" and hear the buzzer "drop" and let go. The machine is to restore the factory default value. Or merge the "Restore Factory Settings" button to quickly restore the factory settings.

Correct Disposal



This product is subject to the provision of European Directive 2012/19/EC. The symbol showing a wheelie bin crossed through indicates that the product requires separate refuse collection in the European Union. This applies to the product and all accessories marked with this symbol. Products marked as such may not be discarded with normal domestic waste, but must be taken to a collection point for recycling electrical and electronic devices.

Made in China

VEVOR[®]

TOUGH TOOLS, HALF PRICE

Technical Support and E-Warranty Certificate

www.vevor.com/support