

VEVOR[®]

TOUGH TOOLS, HALF PRICE

Technical Support and E-Warranty Certificate www.vevor.com/support

WHEEL DOLLY

MODEL: TL-9013C

We continue to be committed to provide you tools with competitive price. "Save Half", "Half Price" or any other similar expressions used by us only represents an estimate of savings you might benefit from buying certain tools with us compared to the major top brands and does not necessarily mean to cover all categories of tools offered by us. You are kindly reminded to verify carefully when you are placing an order with us if you are actually saving half in comparison with the top major brands.

Model: TL-9013C



NEED HELP? CONTACT US!

Have product questions? Need technical support? Please feel free to contact us:

 [**CustomerService@vevor.com**](mailto:CustomerService@vevor.com)

This is the original instruction, please read all manual instructions carefully before operating. VEVOR reserves a clear interpretation of our user manual. The appearance of the product shall be subject to the product you received. Please forgive us that we won't inform you again if there are any technology or software updates on our product.



Safety & Warning

- Read and understand this entire manual before assembling, installing, operating, or servicing this product. Failure to follow these warnings and instructions can cause death, personal injury or damage to valuable property.
- While assembling and using this product, keep work area clean and well lighted, and keep spectators and children out of the work area.
- Support load by appropriate means after lifting.
- Do not exceed rated capacity.
- Before moving the vehicle, ensure that the vehicle wheels are centered and secure.
- Activate the wheel- and/or caster-locking devices after moving a vehicle.
- Never work on, around, or under a vehicle supported by vehicle-moving dollies.
- Wear ANSI-approved safety goggles and heavy-duty work gloves during use.
- Keep clear of load's path while placing on and removing from dollies, and while moving.
- Use as intended only. Use only in pairs.
- Be aware of dynamic loading! Sudden load movement may briefly create excess load causing product failure.
- Do not work under vehicle while on Dollies.
- Do not use damaged equipment. If abnormal noise or vibration occurs, have the problem corrected before further use.
- Before each use, inspect the general condition of the wheel dolly. Check for: broken, cracked, or bent parts, loose or missing parts, and any condition that may affect the proper operation of the product.
- After every use, wipe with a clean cloth. Then, store the wheel dolly in a safe, dry location out of reach of children and other non-authorized people.
- Periodically: lubricate the casters and foot pedal pivot with oil. Put

lever in down position, spread arms apart and lightly grease the notched tube.

Specifications

Model Series	TL-9013C
Maximum Load Capacity (lb)	1500
Range of Tyre Width (inch)	0-13
Net Weight (kg)	17
Gross Weight (kg)	19.5

Figure of the Product

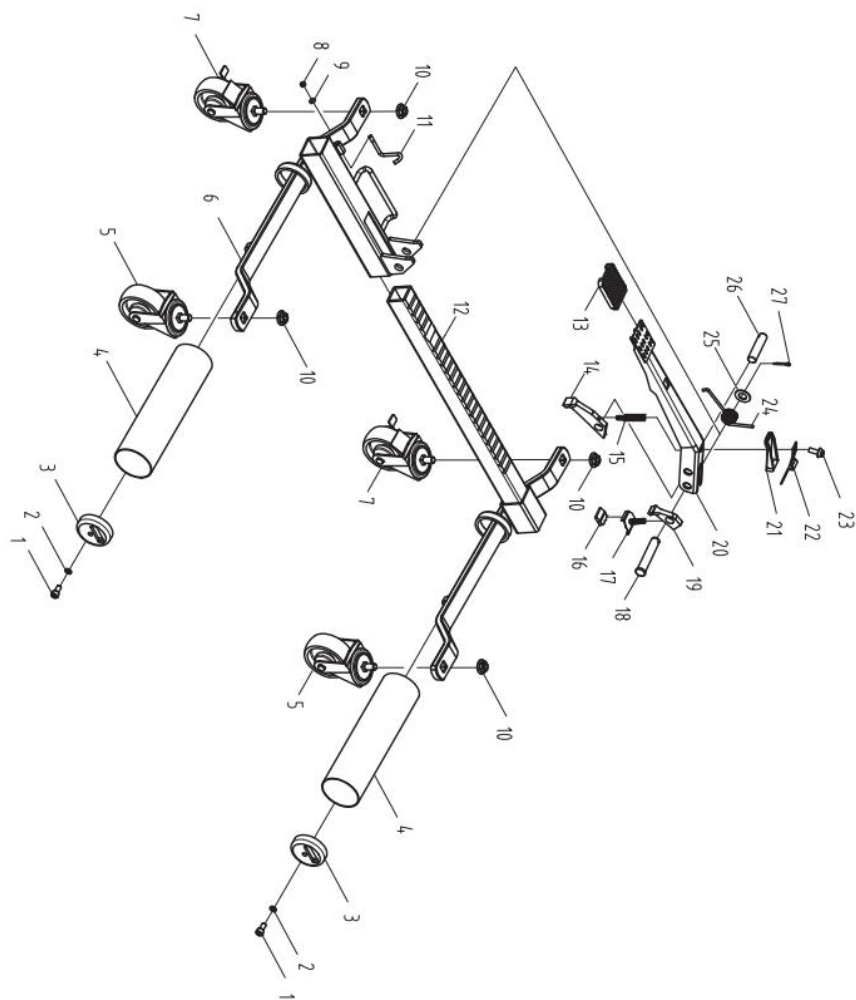


Figure 1

Part	Description	Qty
1	Screw M8x16	2
2	Washer 8	2
3	Steel bowl	2
4	Roller	2
5	Swivel Caster A	2
6	Outter tube Assembly	1
7	Swivel Caster B	2
8	Nut M6	1
9	O-Ring	1
10	Nut M12	4
11	Pedal Lock	1
12	Inter tube Assembly	1
13	Rubber Pad	1
14	Front Pawl	1
15	Spring B	1
16	Lever	1
17	Riveting Plate	1
18	Pin	1
19	Back Pawl	1
20	Foot Pedal	1
21	Lever	1
22	Press Plate	1
23	Screw M8X20	1
24	Torsion spring	1
25	Washer 16	1
26	Pin	1
27	Pin	1

Assembly Instructions

- A. Assemble on a flat, level, hard and smooth surface.
- B. Attach two Locking Swivel Casters to the side of the frame that has the foot pedal.
- C. Attach two Swivel Casters to the other side.

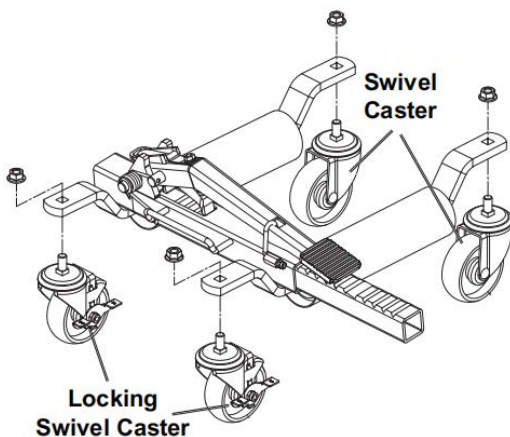


Figure 2

- D. When attaching Casters, make sure the square bolts seat inside the square openings. Thread Lock Nuts onto all four Caster bolts, securing tightly.

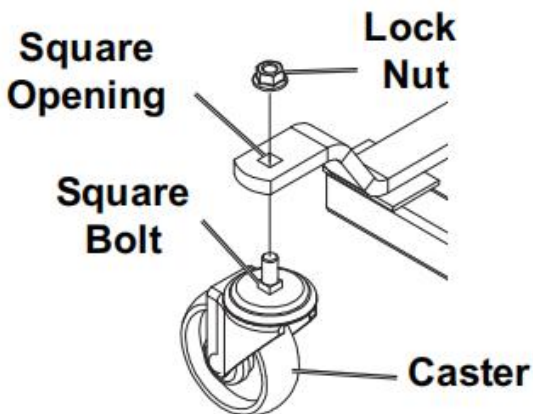


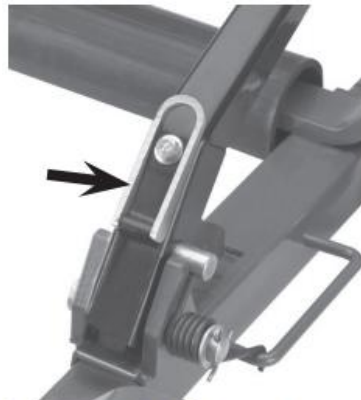
Figure 3

Operating Instructions

- A. Release the Foot Pedal by depressing it and disengaging the Pedal Lock. Push Lever down and unlock Locking Swivel Casters.
- B. Lifting Tire: a. With the Lever in the down position, roll Dolly in front of tire, spread Arms apart, then push Dolly forward so that Rollers are on either side of tire. b. Move the Lever to the up position, then pump the Foot Pedal until the tire is just lifted off the ground.



Figure 4



Lever in Up Position

Figure 5

- C. Repeat Lifting Tire for the other tire(s). Use only in pairs.
- D. Once vehicle is in place, lock all Locking Swivel Casters.
- E. Lowering Tire: a. Unlock Locking Swivel Casters. b. Move the Lever to the down position, then depress and release the Foot Pedal. c. Once tire is on the ground, spread Arms and remove Dolly. d. Push arms together, then depress Foot Pedal all the way and secure with Pedal Lock.



Pooledas Group Ltd
Unit 5 Albert Edward House,
The Pavilions Preston, United Kingdom



SHUNSHUN GmbH
Römeräcker 9 Z2021, 76351
Linkenheim-Hochstetten, Germany

Imported to AUS: SIHAO PTY LTD, 1 ROKEVA STREETEASTWOOD
NSW 2122 Australia

Imported to USA: VEVOR STORE INC, 9448 RINCHMOND PL #E
RANCHO CUCAMONGA, California, 91730 United States of America

Address: Baoshanqu Shuangchenglu 803long 11hao 1602A-1609shi
Shanghai

Made in China

VEVOR[®]

TOUGH TOOLS, HALF PRICE

Technical Support and E-Warranty Certificate

www.vevor.com/support

Made in China