

VEVOR[®]

TOUGH TOOLS, HALF PRICE

Technical Support and E-Warranty Certificate www.vevor.com/support

TIRE BEAD BREAKER

MODEL: ECBS01

We continue to be committed to provide you tools with competitive price.

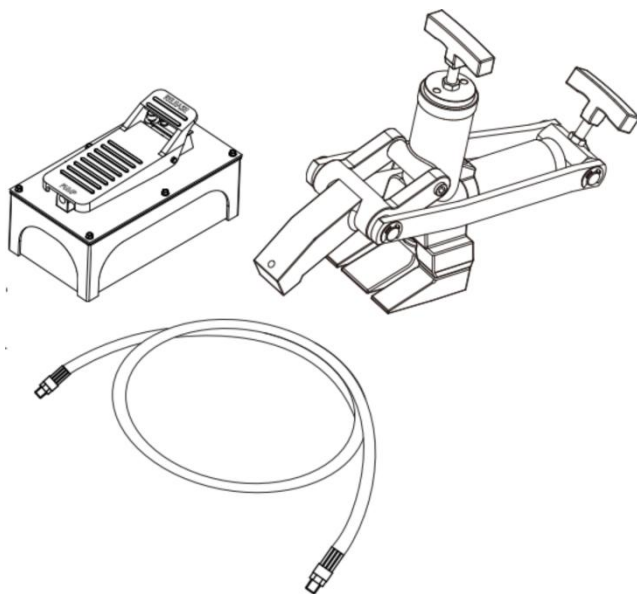
"Save Half", "Half Price" or any other similar expressions used by us only represents an estimate of savings you might benefit from buying certain tools with us compared to the major top brands and does not necessarily mean to cover all categories of tools offered by us. You are kindly reminded to verify carefully when you are placing an order with us if you are actually saving half in comparison with the top major brands.

VEVOR®

TOUGH TOOLS, HALF PRICE

TIRE BEAD BREAKER

MODEL:ECBS01



NEED HELP? CONTACT US!

Have product questions? Need technical support? Please feel free to contact us:

 CustomerService@vevor.com

This is the original instruction, please read all manual instructions carefully before operating. VEVOR reserves a clear interpretation of our user manual. The appearance of the product shall be subject to the product you received. Please forgive us that we won't inform you again if there are any technology or software updates on our product.

SPECIFICATIONS

Model	Maximum Pressure (PSI)	Net Weight (kg)	Gross.Weight (kg)	Package Size (mm)
ECBS01	10000	24.9	27.7	545×330×280

 **Read this manual and follow all the safety rules and operating instructions before using this product.**

RESPONSIBILITY OF THE OWNER AND/OR THE END USER OF THIS DEVICE

This manual is an integral part of the BEAD BREAKER KIT and must always accompany it, also in the case of its sale. The owner and/or the end user of the BEAD BREAKER KIT must follow the instructions for its use and the suggestions of the manufacturer, before using it. If the end user does not understand very well the language of this manual, instructions must be read and explained in his mother tongue, being sure that he understands their meaning.

The Air/Hydraulic pump is capable of generating fluid pressure up to 10.000PSI. Make certain the tool in use is held securely and is in proper working condition. Do not continue to operate the pump once the work is completed. Failure to comply with these instructions could result in personal injury or damage to the equipment of oil port thread size, usable oil capacity, and more.

The manufacturer is not liable for any damage to persons or things due to incorrect use of this BEAD BREAKER KIT.

BEFORE USE

- a) A visual control must be carried out every time you want to use the BEAD BREAKER, checking leaks, damages, missing or loose parts, worn parts, etc.
- b) all the BEAD BREAKERS must be carefully checked if it has suffered a damage or a clash.

We suggest that skilled personnel yearly check the bead breaker and that all defective parts, worn parts etc. are replaced by using original spare parts supplied by the manufacturer (see spare parts list)

c) To prevent oil leak during shipment, a metal knob is installed and tightened to ensure the best sealing function for the air hydraulic pump. Loosen it counterclockwise before use.

d) Depressing the RELEASE pedal causes a decrease in pressure and pressing the PUMP end of the pedal provides fluid.

OPERATION



Fig. 1

Connect the hydraulic pump (manual or air) to the bead breaker through the quick couplers. If you use the air/hydraulic pump, you must connect it to a source of compressed air of 100-120 psi. (See separate manual of the air/hydraulic pump!)

Test the bead breaker before you attach it to the rim. Release all air from tire, remove cap and valve and the valve extension included.

Verify that the tire is completely deflated!

HOW TO OPERATE THE AIR HYRAULIC PUMP:

- Connect the hose of the Air/Hydraulic Pump to the hydraulic coupling on the selected tool.
- Connect the air supply line to the Air/Hydraulic Pump. Air supply should be 5-10 CFM at 100 PSI to obtain proper operating characteristics. In addition, the air line should be equipped with an air line filter.
- Stepping on the PUMP end of the pedal engage the pump, producing the force necessary to run the tool.
- Depressing the RELEASE end of the pump pedal will release the pressure.

HOW TO OPERATE THE BEAD BREAKER

This bead breaker work on all types of rims(optional claws may be required). Depending on the type of wheel make sure you have the right accessories installed:

- Hold the bead breaker to the rim as indicated in Fig. 1
- With the claw pushing against the inner part of the rim, the shovel and feet push against the lateral ring and the bead of the tire.
- Maintaining pressure the shovel pushes against the bead of the tire thus breaking the bead from the rim.
- Repeat this operation around the rim as many times as needed to completely break the tire bead from the rim of the wheel.
- Remove the Clip-Ring with the appropriate tools and the ring will come loose.
- Repeat this operation on the opposite bead of the tire and rim.

ATTENTION! SAFETY REGULATIONS

- a) Always deflate tires before starting disassembling operations
- b) Use the proper tools

c) Always use protection means (accident-prevention shoes, etc.)

Do not forget that there are always crushing risks!

d) Lock the safety rods on articulated vehicles.

e) Safety valve is set and sealed by the manufacturer.

It is absolutely forbidden to tamper with it and change its calibration.

The INCOMPLIANCE or these INSTRUCTIONS can cause damages and/ or breakage to the BEAD BREAKERS with consequent damages to persons and things.

MAINTENANCE

Check the tools before their use. In case of oil leaks, replace the seals. For pump maintenance, see its instruction manual.

CHECKS

a) Check the tools before their use. In case of oil leaks, replace the seals.

b) Inspect hoses and connections daily.

c) Tighten connections as needed. Use non-hardening pipe thread compound when servicing connections.

d) Use only good quality hydraulic fluid. We recommend Mobil DTE 13M or equivalent for the air hydraulic pump.

• When not in use or during storage:

1. Depressurize and disconnect hydraulic hoses from application.
2. Wipe clean, thoroughly.
3. Store in clean, dry environment. Avoid temperature extremes.
4. Shield pump with a protective cover.

• Adding Hydraulic Fluid

1. Depressurize and disconnect hydraulic hose from application.
2. With pump in its upright, horizontal position, remove the oil filler plug located on the top plate of the reservoir.
3. Use a small funnel to fill reservoir to within 3/4"(19mm) of the opening.

Note: Use only good quality hydraulic jack oil.

Never use brake fluid, transmission fluid, turbine oil, motor oil, alcohol, glycerin etc. Use of other than good quality hydraulic oil will void warranty and damage the pump, hose, and application.

4. Wipe up any spilled fluid and reinstall the oil filler plug

- **Changing Hydraulic Fluid**

1. For best results, change fluid once a year.

2 . Repeat # 2 above, then pour used fluid into a seal container.

3 . Dispose of fluid in accordance with local regulations.

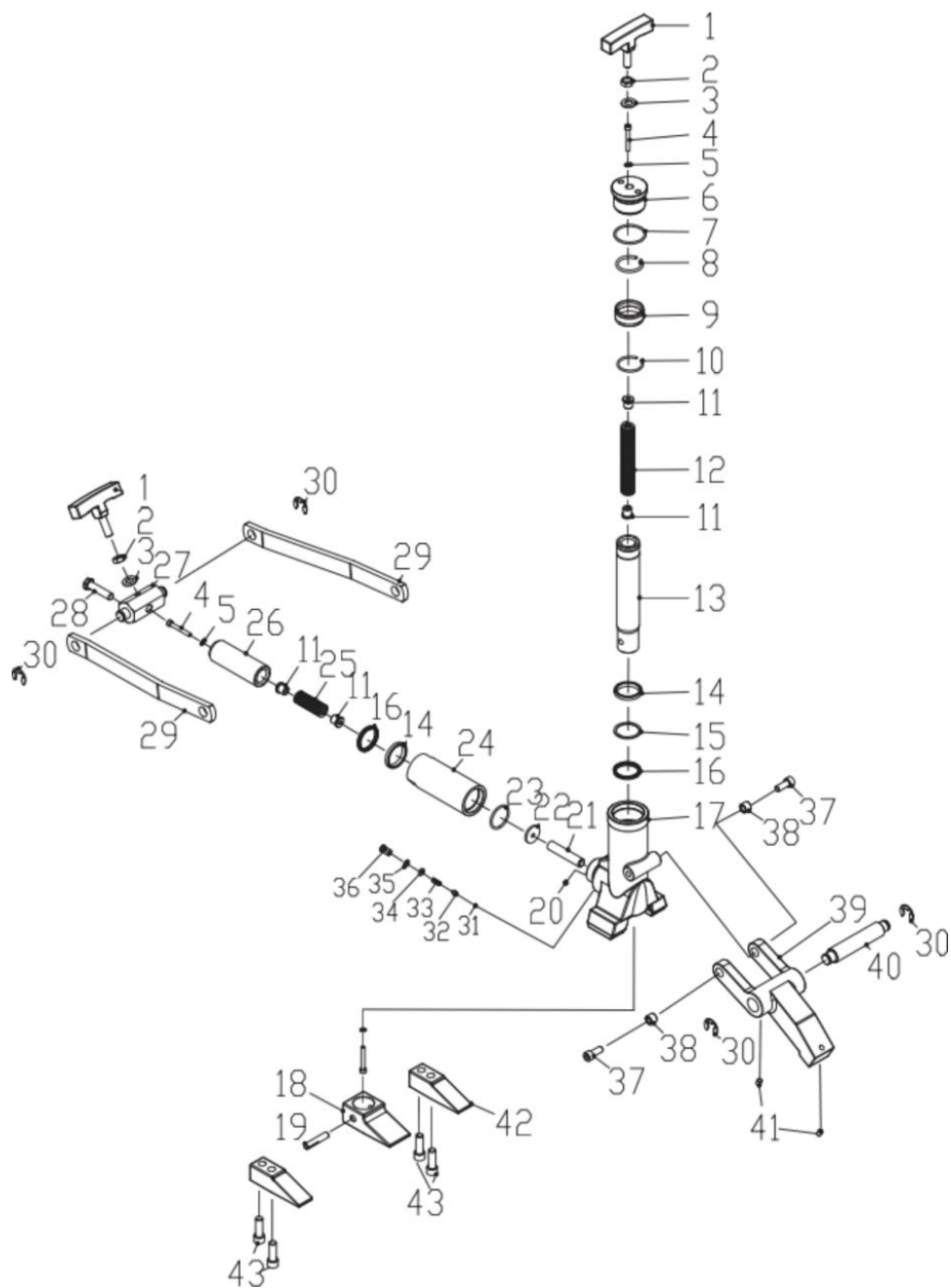
4. Fill with a good quality hydraulic jack oil as recommended above.
Reinstall vented oil filler plug.

- **Lubrication**

Use a light machine oil to lubricate pivot points, hinges etc.

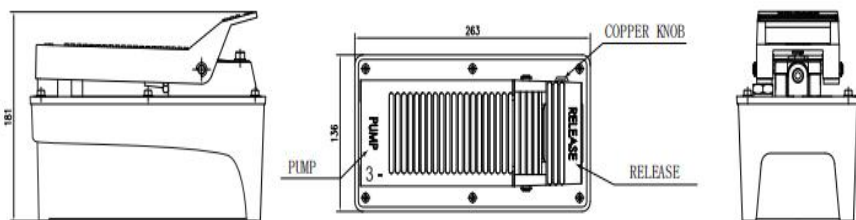
Note: Never operate pump with release valve closed and disconnected from application. If operated in this condition, the hose and connections become pressurized. This increases burst hazard. Damage may occur to pump and its components.

PARTS BREAKDOWN



Parts List

Item #	Description	Q'TY	Item #	Description	Q'TY
1	Handle	2	23	O-Ring	1
2	Nut	2	24	Oil Cylinder	1
3	Washer	2	25	Spring A	1
4	Bolt	3	26	Tension Rod	1
5	Copper Washer	3	27	Connector	1
6	Cover Board	1	28	Bolt	1
7	O-Ring	1	29	Connecting Rod	2
8	Stell W ire Ring	1	30	Snap Ring	4
9	Bushing	1	31	Steel Ball	1
10	Stell W ire Ring	1	32	Steel Ball Valve Seat	1
11	Nut	4	33	Spring	1
12	Spring B	1	34	O-Ring	1
13	Ejector Rod	1	35	Snap Ring	1
14	O-Ring	2	36	Bolt	1
15	Nylon Gasket	1	37	Bolt	2
16	Dust Proof Ring	2	38	Bushing	2
17	Cylinder Body	1	39	Claw Body	1
18	Leg	1	40	Axis	1
19	Pin	1	41	Bolt	2
20	Steel Ball	1	42	Leg	2
21	Bolt	1	43	Bolt	4
22	Washer	1			



TROUBLESHOOTING

Symptom	Possible Causes	Corrective Action
Application will not extend, move or respond to pressurized fluid	<ul style="list-style-type: none"> • Overload condition • Release valve not closed 	<ul style="list-style-type: none"> • Remedy overload condition , Ensure release valve closed
<p>Application responds to pressurized fluid, but system does not maintain pressure</p> <p>Application will not return fluid to pump (i.e. cylinder will not retract)</p>	<ul style="list-style-type: none"> • Overload condition • Release valve not closed • Hydraulic unit malfunction • Malfunctioning coupler,damaged application • Reservoir overfilled 	<ul style="list-style-type: none"> • Remedy overload condition • Ensure release valve closed • Secure load by other means. Open release valve, depressurize pump and hose, remove coupler and/or application, then renew or replace • Secure load by other means. Open release valve, depressurize pump and hose, remove application, then drain fluid to proper level.
Application will not fully extend (cylinder or spreader)	<ul style="list-style-type: none"> • Fluid level low • Fluid level low 	<ul style="list-style-type: none"> • Follow Symptom 3 procedure for securing load,depressurizing pump, remove application, then ensure proper fluid level

Poor performance	<ul style="list-style-type: none">• Air trapped in system	<ul style="list-style-type: none">• Ensure proper fluid level• Ensure vented oil filler plug let pressurized reservoir air escape (see Before Use)
------------------	---	---

DAMAGED TOOLS

All damaged tools, worn tools or incorrectly operating ones **MUST BE PUT OUT OF ORDER**. We suggest that necessary repairs are carried out by skilled personnel authorized by the manufacturer.

BEAD BREAKER SCRAPPING

When your bead breaker kit ,after many years of use, must be scrapped, you must remove oil from the cylinder and from the pump. Oil must be recycled according to the regulations in force.

Address: Baoshanqu Shuangchenglu 803long 11hao 1602A-1609shi Shanghai

Imported to AUS: SIHAO PTY LTD, 1 ROKEVA STREETEASTWOOD NSW 2122 Australia

Imported to USA: VEVOR STORE INC, 9448 RINCHMOND PL #E RANCHO CUCAMONGA, California, 91730 United States of America

UK	REP
-----------	------------

Pooledas Group Ltd
Unit 5 Albert Edward House, The Pavilions
Preston, United Kingdom

EC	REP
-----------	------------

SHUNSHUN GmbH
Römeräcker 9 Z2021, 76351
Linkenheim-Hochstetten, Germany

Made In China

VEVOR[®]

TOUGH TOOLS, HALF PRICE

Technical Support and E-Warranty Certificate

www.vevor.com/support

Made In China