

# **VEVOR<sup>®</sup>**

**TOUGH TOOLS, HALF PRICE**

**STAIR CLIMBING CART**

**2125B**

**USR MANUAL**

We continue to be committed to provide you tools with competitive price.

"Save Half", "Half Price" or any other similar expressions used by us only represents an estimate of savings you might benefit from buying certain tools with us compared to the major top brands and does not necessarily mean to cover all categories of tools offered by us. You are kindly reminded to verify carefully when you are placing an order with us if you are actually saving half in comparison with the top major brands.

# VEVOR<sup>®</sup>

## STAIR CLIMBING CART



### NEED HELP? CONTACT US!

Have product questions? Need technical support? Please feel free to contact us:

 [CustomerService@vevor.com](mailto:CustomerService@vevor.com)

This is the original instruction, please read all manual instructions carefully before operating. VEVOR reserves a clear interpretation of our user manual. The appearance of the product shall be subject to the product you received. Please forgive us that we won't inform you again if there are any technology or software updates on our product.

This is the original instruction, please read all manual instructions carefully before operating. VEVOR reserves clear interpretation of our user manual. The appearance of the product shall be subject to the product you received. Please forgive us that we won't inform you again if there is any technology or software updates on our product.

## **SAFETY INSTRUCTIONS**

### **WARNING:**

1. Please do not put it near flammable materials.
2. It is forbidden to carry people at any condition.
3. Please pay attention to safety when going up and down stairs.
4. Overload is strictly prohibited.
5. Don't move too fast when passing potholes areas.

## **Model and Parameters**

<b>Model</b>	<b>2125B</b>
Maximum Load(Flat Ground)	250kg
Maximum Load(Climb Stairs)	150kg
Overall Dimensions	152.8*45.8*52.3cm

# Structure Diagram



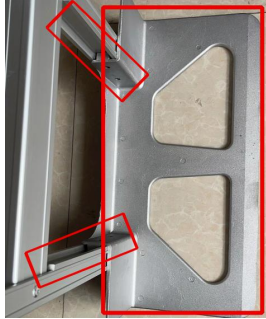
- 1.Handle 1
- 2.Handle 2
- 3.Frame
- 4.Trim Strip
- 5.Climbing Wheel
- 6.Wheel Frame
- 7.Tray

# COMPONENTS

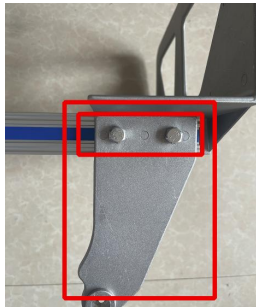
		
<b>A.Frame(x1)</b>	<b>B.Wheel Frame(x2)</b>	<b>C.Wheel Sets(x2)</b>
		
<b>D.Tray(x1)</b>	<b>E.Reinforcement(x2)</b>	<b>F.Axle(x1)</b>
		
<b>G.Handle 1(x1)</b>	<b>H.Handle 2(x1)</b>	<b>I.Trim Strip (x1)</b>
		
<b>J.Washer(x2)</b>	<b>K.Cotter Pin(x4)</b>	<b>L.Outer Hexagon Bolt(x4)</b>
		
<b>N.Jam Nut(x8)</b>	<b>M.Crosshead Bolt(x4)</b>	<b>O.Installation Tools(x3)</b>

## Assembly and Use

1. Place the reinforcement(E) inside the frame(A) (below the hole), and then insert the tray(D).



2. Place the wheel frame (B) on the outside of the frame as shown in the figure, align it with the hole, and finally fix it with the outer hexagon bolt (L+N).



3. Insert the axle (F) into the wheel frame, insert the cotter pin (K) inside the wheel frame and bend it, and put the gasket (J) outside.



4. Install the wheel set (C), insert the cotter pin (K) and bend it.



Put in handle 2 (H), handle 1 (G) and trim strip (I) in turn, align them with the holes and fix them with crosshead bolts (M+N).



## Troubleshooting Instruction

Problem	Reasons	Solution
Wheel rolling is not smooth	Insufficient lubrication	Add oil to lubricate the rotating parts
Velcro is not sticky	The Velcro has sundries	Clean the hair, thread, and other sundries on the Velcro

## Maintenance

- 1.Avoid prolonged exposure to the sun to avoid aging.
- 2.Avoid children taking the stair climbing cart to play.

**Manufacturer:Jinhua Development Measuring Tools Co.,Ltd.**

**ADD: Qiubin industrial park, Wucheng District, Jinhua, Zhejiang province**

**MADE IN CHINA**

**VEVOR<sup>®</sup>**

E-mail: [CustomerService@vevor.com](mailto:CustomerService@vevor.com)