

VEVOR[®]

TOUGH TOOLS, HALF PRICE

Support and E-Warranty Certificate

<https://www.vevor.com/support>

POTTERY WHEEL MACHINE USER MANUAL

We continue to be committed to offering tools at competitive prices. "Save Half", "Half Price", or any other similar expressions used by us only represent an estimate of savings you might benefit from buying certain tools with us compared to the major top brands and do not necessarily mean to cover all categories of tools offered by us. You are kindly reminded to verify carefully when placing an order with us if you are saving half in comparison with the top major brands.

VEVOR[®]

POTTERY WHEEL MACHINE

MODEL:LSSJSX-515



NEED HELP? CONTACT US!

Have product questions? Need technical support? Please feel free to contact us:

✉ CustomerService@vevor.com





This is the original instruction, please read all manual instructions carefully before operating. VEVOR reserves a clear interpretation of our user manual. The appearance of the product shall be subject to the product you received. Please forgive us that we won't inform you again if there are any technology or software updates on our product.

SAFETY INSTRUCTIONS



WARNING: Read all safety warnings, instructions, illustrations and specifications provided with this electrical equipment. Failure to follow all instructions listed below may result in electric shock, fire and/or serious injury.

Save all warnings and instructions for future reference.

	Warning - To reduce the risk of injury, user must read instructions manual carefully.
	Alternating current
	This symbol, placed before a safety comment, indicates a kind of precaution, warning, or danger. Ignoring this warning may lead to an accident. To reduce the risk of injury, fire, or electrocution, please always follow the recommendation shown below.
	HOUSEHOLD USE ONLY

- 1.This equipment is only applicable to ceramic drawings and cannot be used for other purposes. Do not use the equipment brutally.
- 2.The equipment shall be placed on a cool, ventilated, dry, dust-proof and level ground.
- 3.Users must wire and install according to electricity safety standards.
- 4.Do not change the rotation direction when the motor is running. To change the rotation direction, stop it first, and start it after the motor completely stops rotating.
- 5.Please use a towel or sponge to clean the machine body, and do not use a lot of water to wash it to avoid water immersion in the motor, switch, bearing, and other parts, causing failure.
- 6.Before use, make sure that the switch and pedal are in the stop position before inserting the power.
- 7.When repairing or replacing parts, the switch must be cut off and the power supply must be unplugged.
- 8.Children should use this equipment with adults(Note: This appliance can be used by children aged from 8 years and above and persons with reduced physical, sensory or mental capabilities or lack of experience and knowledge if they have been given

supervision or instruction concerning use of the appliance in a safe way and understand the hazards involved. Children shall not play with the appliance. Cleaning and user maintenance shall not be made by children without supervision).

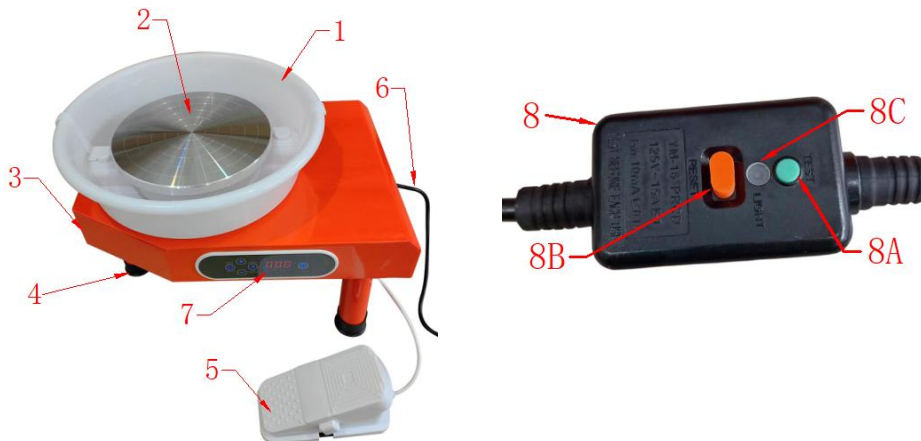
9.Periodically check whether the power cable is damaged and the connector is loose.

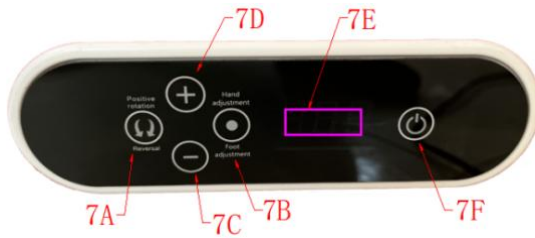
10.Press button(8A) on the leakage protector once a month to check whether the leakage protection can work normally!

MODEL AND PARAMETERS

Model	LSSJSX-515
Maximum Payload(Clay)	5 KG
Voltage	100-240V~ 50/60Hz
Power	350W
Rated current (Leakage protector)	16A
Speed	0-310r/min
Sound power level	60dB

STRUCTURE DIAGRAM





1. Removable water basin
2. Aluminum turntable
3. Equipment body
4. Foot Pad
5. Speed regulating pedal
6. Power line
7. Touch panel

7A: Forward/reverse switch 7B: Manual/pedal switch

7C: Slow down 7D: Acceleration

7E: Display 7F: Touch switch

8. Leakage protector

8A: Test button

(Press once a month. It is normal if the indicator goes off after you press it)

8B: Reset button

(If the power is off, please first remove the leakage danger, and then press this key to restore the power.)

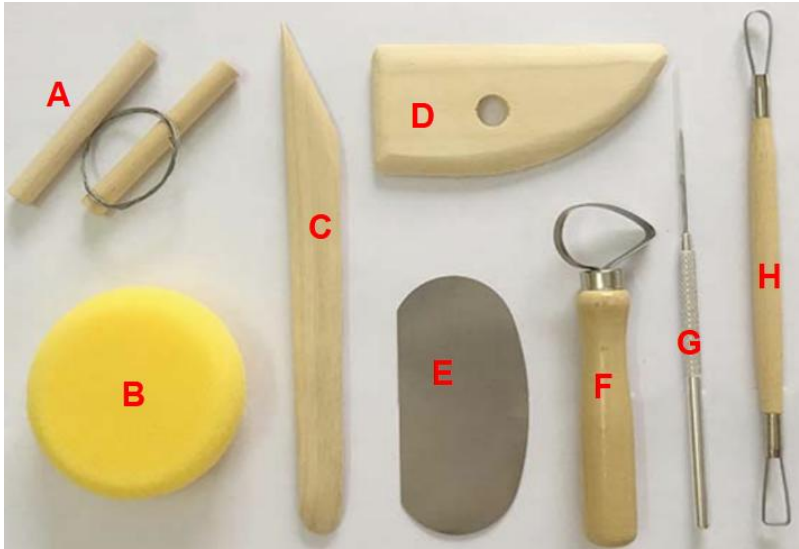
8C: Indicator light (Power on when the light is on)

TOOL ACCESSORIES AND USE

1. Apron(x1): Prevent clothes from getting dirty.



2. 8-Piece Tool Set(x1)



A(Clay cutting line): Assist in precisely cutting clay (cutting surface is very smooth)/repairing and leveling the mouth of the work/taking away the finished product.



B(Small yellow sponge): Add water or absorb water/trim the surface or mouth edge to make it smooth.



C(Wooden knife): Trim the bottom for later removal/trimming.



D(Wooden scraper): Trim the opening/shape and remove the excess clay on the surface to make it smooth.



E(Stainless steel scraper): Remove the excess clay on the surface to make it smooth.



F(Circular large flat wire knife): Trim the surface of the vessel/ control the thickness/trim out the bottom ring foot.



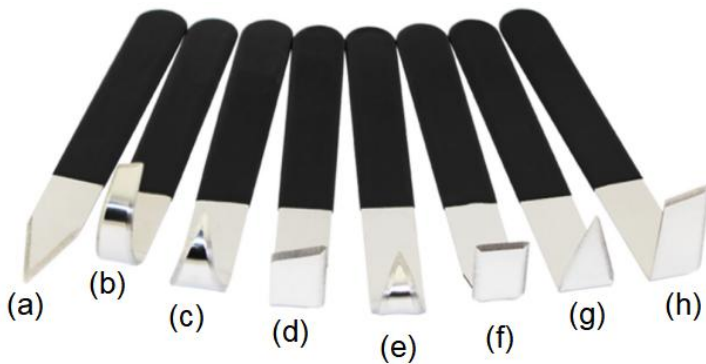
G(Steel needle): Scrape off excess clay from the mouth edge/remove air bubbles/punch holes.



H(Ribbon flat wire knife): Finely trim the surface of the utensil or circle the foot.



3. Stainless steel clay-repair knife 8-piece Set(x1): Repair clay molds as shown below.





(a)



(b)



(c)/(e)



(g)



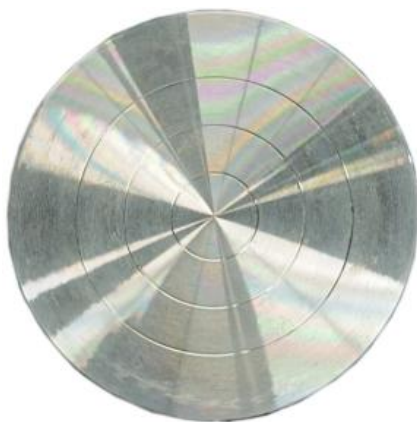
(g)



(d)/(f)/(h)

4. Aluminium turntable ($\Phi 250\text{mm}$): The size of the turntable depends directly on the maximum diameter we can achieve.

(Loosen the bolt with a wrench and replace it)

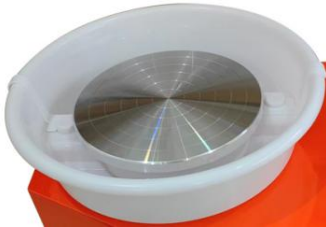


OPERATING STEPS

Step1: Take out a proper amount of clay, throw the mud ball in the center of the wheel, and press it (wet your hands).



Step2: Plug in the power (If the water basin is not installed, install the water basin first).



Step3: Turn on the switch and choose the direction of forward (clockwise)/reverse (counterclockwise) rotation according to your needs.



Step4: Adjust the speed and start clay molding with tools (You can also choose to pedal the speed control) .



Step5: Clay-mold repairs with tools.

Step6: Creative painting and coloring can be carried out according to their own needs.

After the work is completed, stop the machine in reverse order.

Remove the molding with a scraper/clay cutting line.

Place in a cool place for a period of time before firing.

SKILLS GUIDANCES

Problem	Reason	Solution
Fracture of clay	Excessive force during lifting	The lifting process should be small and even.
Clay is in a spiral shape.	The clay molding speed exceeds the machine speed.	Turn the mold a few times in advance.
Clay unevenly stressed presses	Abnormal posture of clay molding.	Sit firmly and keep your back, neck, shoulders, upper arms, forearms, wrists and palms still. Coordinate your whole body Strength.
Clay off center	Got wrong and unstable force on hands when looking for the center.	The left palm must be placed in the eight o'clock position on the turntable and applied downward oblique pressure with even force.

<p>The opening is uneven and off-center.</p>	<ol style="list-style-type: none"> 1.The center is not found correctly. 2.Not opening in the center. 3.Hands shake when pressing down, uneven force. 	<p>The opening of the middle tip of the left finger or thumb must be assisted by the right finger and must be pressed down vertically from the center point.</p>
<p>Hollow at the bottom</p>	<p>Pressing down too fast and too hard.</p>	<ol style="list-style-type: none"> 1.The bottom thickness of the hole should be left about 2cm. 2.Pause the machine, add new clay, start the machine, and smooth the surface.
<p>Bubbles.</p>	<p>The clay has not been kneaded properly.</p>	<p>Pause the machine and prick the air bubbles with a needle, fill the hole with clay, then start the machine to smooth the surface.</p>
<p>Uneven thickness when lifted.</p>	<p>Hands are not on parallel lines or uneven force.</p>	<p>The inner and outer fingertips must move synchronously in a straight line when lifting the clay.</p>
<p>Mold collapsed.</p>	<ol style="list-style-type: none"> 1.There was too much water and the clay was too soft to hold. 2.Opening rapidly expands, deformation and collapse. 3.The wall is thick on the top and thin on the bottom, which cannot be supported. 4.Clay is used for too long and its viscosity decreases. 	<ol style="list-style-type: none"> 1. Use as little water as possible when drawing. 2. Keep your hands moving from the bottom to the top. 3. Never press down. 4. Rapid prototyping.

Bottom break	<ol style="list-style-type: none"> 1.Knead clay is not uniform, clay dry and wet is not uniform. 2.Water at the bottom, no water absorption after forming. 3.When dry, not placed on absorbent boards. 4.Sun exposure. 5.Too thick at the bottom. 	<ol style="list-style-type: none"> 1.Knead the clay evenly. 2.Sponge up the water inside the vessel when finished. 3.Let dry on a solid board. 4.Keep out of the sun. 5.The bottom thickness is less than 2cm.
--------------	--	---

TROUBLESHOOTING INSTRUCTION

Problem	Reason	Solution
Does not work.	The power supply is not connected.	<ol style="list-style-type: none"> 1.Check whether the power plug is properly inserted. 2.Check whether the leakage protector is on.
Shaking of the machine	The machine is not level with the ground.	Adjust the four feet of the machine so that the machine is level with the ground.
The turntable makes a sound.	The water basin against the turntable.	Check whether water basin is properly installed.
Water basin is leaking.	<ol style="list-style-type: none"> 1.The water exceeds the waterproofing edge of the basin. 2.The water basin is not installed properly. 	<ol style="list-style-type: none"> 1.Check whether the storage of mud water exceeds the waterproof edge. 2.Check that water basin is properly installed.
The turntable jumps too much.	The fastener is loose.	Check whether the fastener is loose. If not, ask a professional to debug it.

CLEAN AND CARE RULES

1. After finishing the equipment operation, it is necessary to clean the clay on the surface of the turntable and wipe the water stains on the surface of the turntable (Do not rinse directly with water).
2. Check the parts regularly for looseness.
3. If you use it sparingly, run it at least once a month.

Manufacturer: Hebei Lesheng Teaching Equipment Co., Ltd.

ADD: East of Xingye Street, North of Hai'an Road, Haixing County, Cangzhou City, Hebei Province

Importer: WAITCHX

Address: 250 bis boulevard Saint-Germain 75007 Paris



EUREP GmbH
Unterlettenweg 1a, 85051 Ingolstadt,
Germany

Made in China

VEVOR[®]

TOUGH TOOLS, HALF PRICE

Support and E-Warranty Certificate

<https://www.vevor.com/support>