

# **VEVOR<sup>®</sup>**

**TOUGH TOOLS, HALF PRICE**

Technical Support and E-Warranty Certificate [www.vevor.com/support](http://www.vevor.com/support)

## **LAWN SWEEPERS**

### **USER MANUAL**

We continue to be committed to provide you tools with competitive price.

"Save Half", "Half Price" or any other similar expressions used by us only represents an estimate of savings you might benefit from buying certain tools with us compared to the major top brands and does not necessarily mean to cover all categories of tools offered by us. You are kindly reminded to verify carefully when you are placing an order with us if you are actually saving half in comparison with the top major brands.

# VEVOR®

TOUGH TOOLS, HALF PRICE

## LAWN SWEEPERS

### S19-001A



### NEED HELP? CONTACT US!

Have product questions? Need technical support? Please feel free to contact us:

 [CustomerService@vevor.com](mailto:CustomerService@vevor.com)

This is the original instruction, please read all manual instructions carefully before operating. VEVOR reserves a clear interpretation of our user manual. The appearance of the product shall be subject to the product you received. Please forgive us that we won't inform you again if there are any technology or software updates on our product.

<b>Table of contents:</b>	<b>Page</b>
1. Description of product.....	2-3
2. Assembly.....	4-10
3. Technical Data.....	11
4. Intended Use.....	11
5. Safety instructions.....	11
6. Symbols.....	12
7. Maintenance and Cleaning.....	12-13
8. Storage and Guarantee.....	14

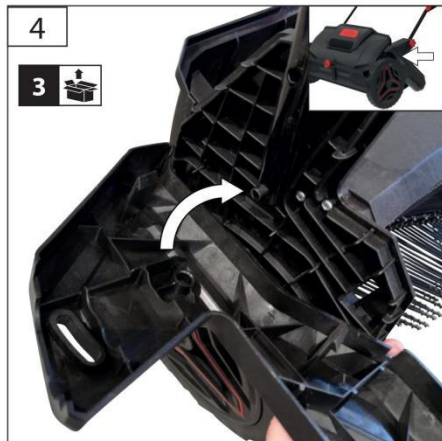
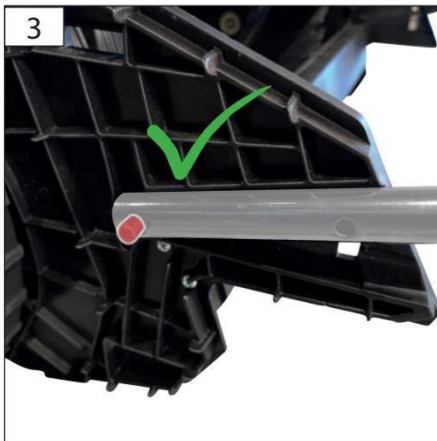
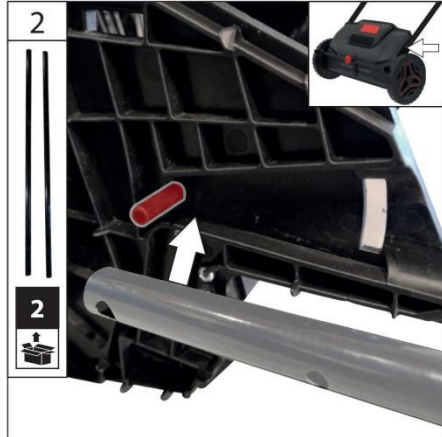
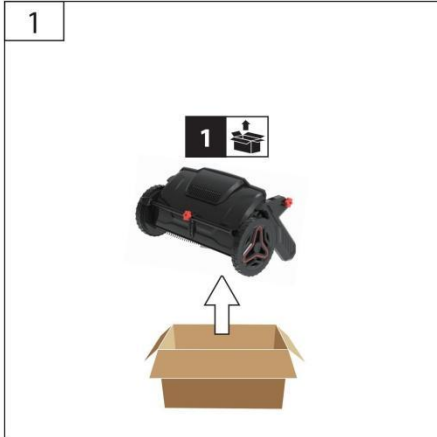
# Description of product



- 1. main housing
- 2. Lower push rod
- 3. Pedestal    3L: Left Pedestal    3R: Right Pedestal
- 4. Upper push rod
- 5. Fillister head screw M6x40
- 6. Star handle nuts
- 7. Fillister head screw M6x50
- 8. Top frame
- 9. Down frame
- 10. Carrying handle holders
- 11. Collection bag
- 12. Carrying handle
- 13. Screw ST4.2x25
- 14. Screw ST4.2x12
- 15. Wall Storage Bracket Assembly
- 16. Quick clip

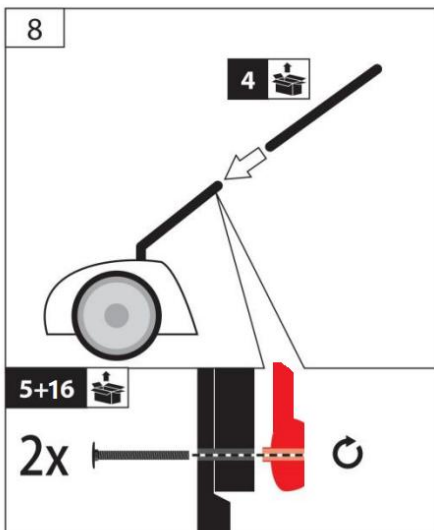
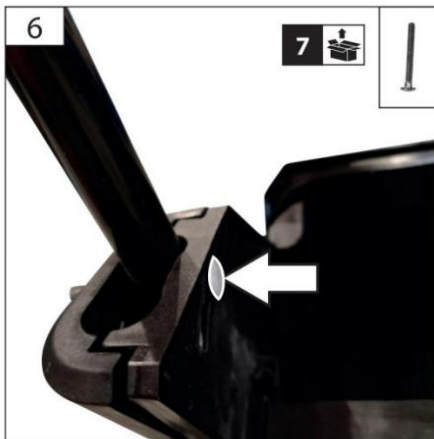
# Assembly

## Fitting the handles



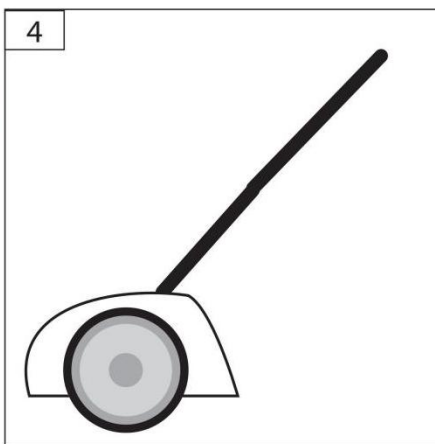
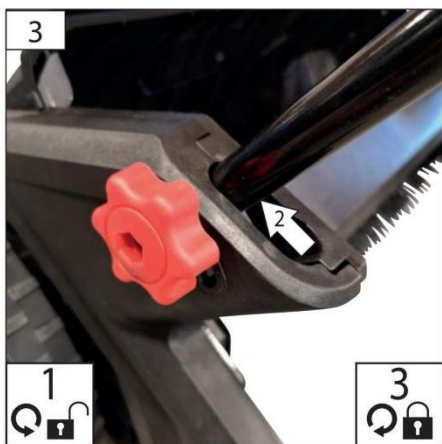
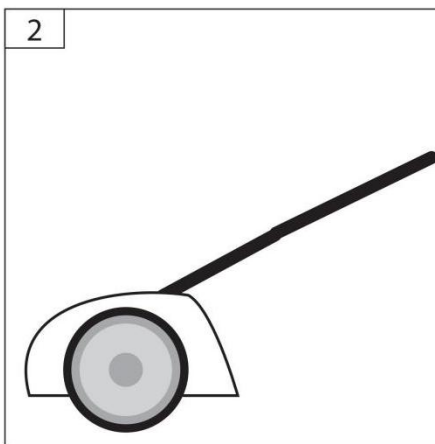
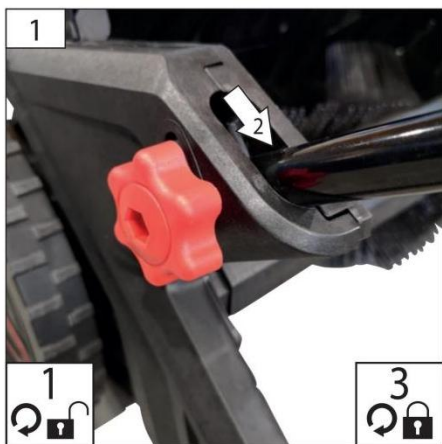
# Assembly

## Fitting the handles



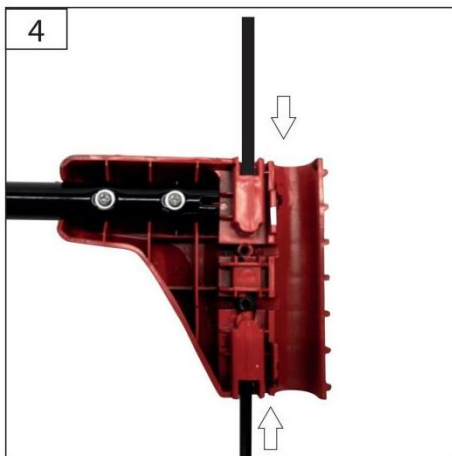
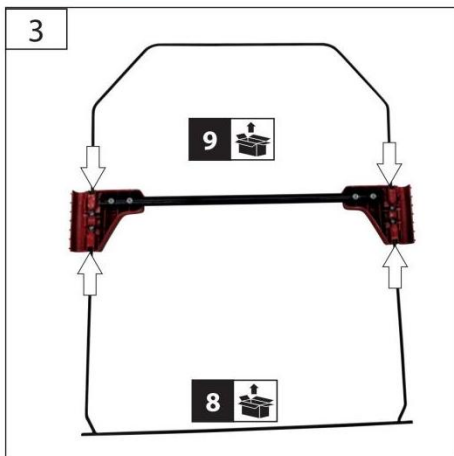
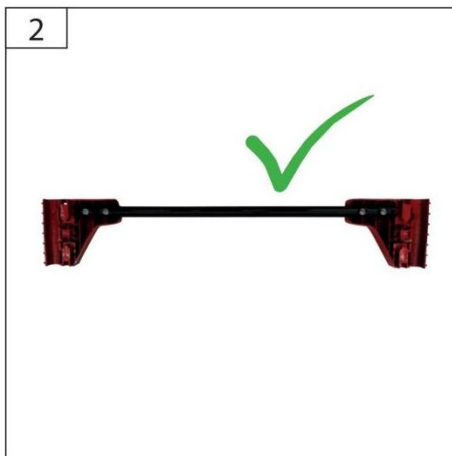
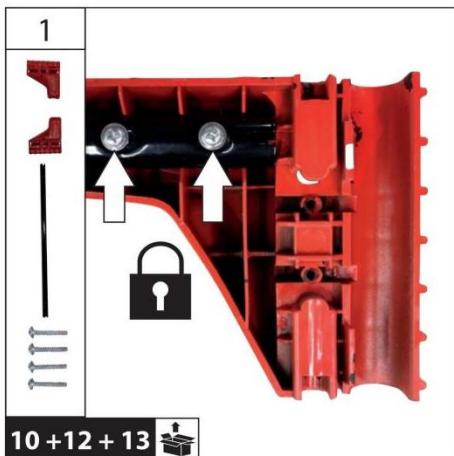
# Assembly

Adjust the height of the handles



# Assembly

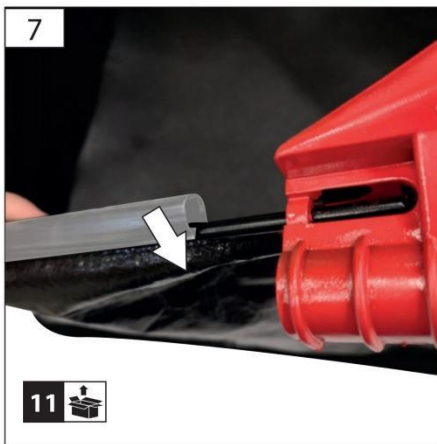
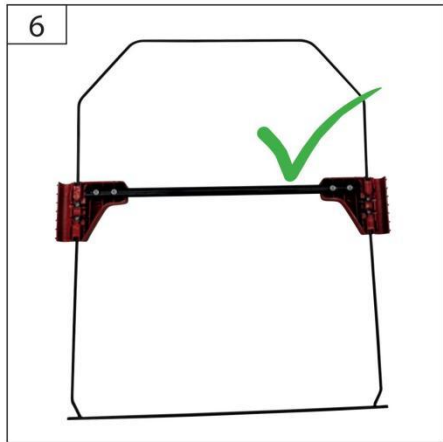
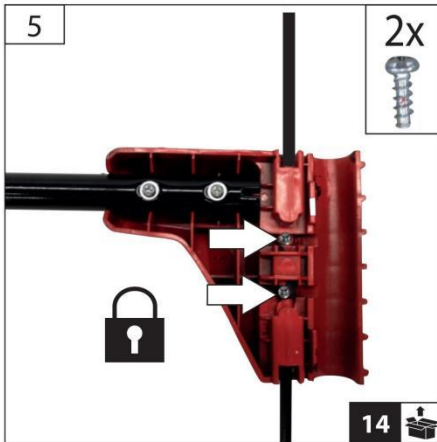
Fitting the collecting bag





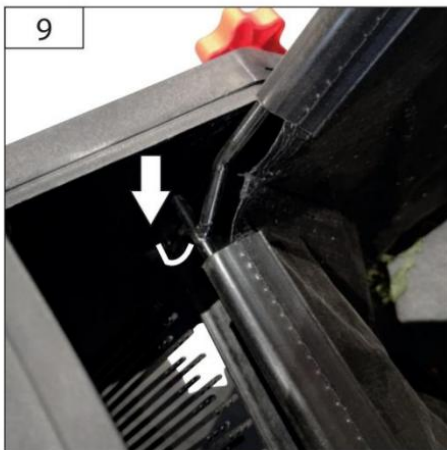
# Assembly

## Fitting the collecting bag



# Assembly

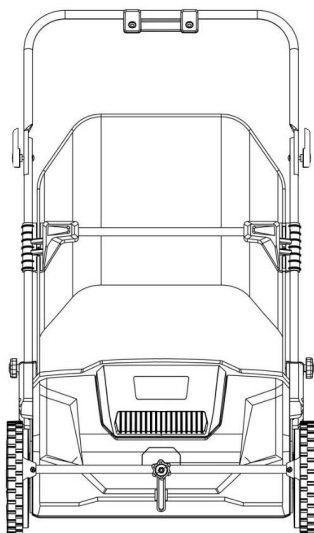
Fitting the collecting bag



## Assembly

### Wall Storage Bracket

The wall storage bracket can be attached to your shed or garage wall using two screws. For a wooden shed wall, screw directly into the wood, making sure it is strong enough to hold the weight of the machine. For a brick or block wall, please use two screws and wall plugs.



This quick clip can realize the quick folding of the upper push rod.



The height adjustment knob can adjust the distance between the brush head and the ground. The height adjustment knob from high to low will increase the intensity of cleaning.

# Technical Data

Leaf sweeper	
Art. No	S19-001A
Working width	530 mm
Volume safety gear	100 L
Height adjustment	0-45 mm
Net/Gross weight	6 kg/ 8 kg



Read and understand the operating instructions before using the appliance. Familiarize yourself with the control elements and how to use the appliance properly. Abide by all the safety measures stated in the service manual. Act responsibly toward third parties. The operator is responsible for accidents or risks to third parties. Persons over 18 years of age can only work on the appliance. An exception includes youngsters trained in order to reach knowledge under the supervision of the trainer during occupational education. In case of any doubts about connection and operation, refer please to our customer center.

## Intended Use

The leaf sweeper is designed for normal use in grounds maintenance.

## Safety instructions

### WARNING

**Read all safety instructions and precautions.** Failure to follow the safety instructions and precautions may result in electric shock, fire and/or serious injury.

**Keep all safety instructions and precautions for future reference.**

Keep children, other people and animals away while using the appliance. The minimum safety distance is 5 m.

Be careful to avoid slipping or falling, especially when working backward.

Check the environment where the appliance will be used and remove any objects that may be caught and thrown out by the unit.

Wear personal protective equipment. Wear suitable work clothes such as sturdy shoes with non-slip soles, durable long trousers, gloves and protective goggles.

Always wear safety glasses or eye protection during operation or when making an adjustment or repair.

Use extreme caution when working on or crossing gravel driveways, pavements or

roads, and remain alert to hidden hazards or traffic.

When changing/lifting/emptying the sweepings container, make sure that it is standing securely.

Always work across the slope with the machine. Max. at an inclination of 30°. Be especially careful when changing direction on a slope, turning the appliance or pulling it towards you.

## Symbols

Symbols are used in this manual to draw your attention to potential hazards. The safety symbols and the accompanying explanations must be fully understood. The warnings themselves will not rectify a hazard and cannot replace proper accident prevention measures.



Read the Operating Instructions



Wear eye protective goggles !  
Wear ear protectors!



Keep distance of persons  
Observe to keep out of dangerous zone



Warning against thrown-off items



Protect against humidity Never expose  
tool to rain.



## Maintenance

Use only original accessories and original spare parts.

Only a regularly maintained and treated appliance can serve as a satisfactory aid.

Insufficient maintenance and care can lead to unforeseen accidents and injuries.



## Clearance

Do not clean the product with a high-pressure water jet.

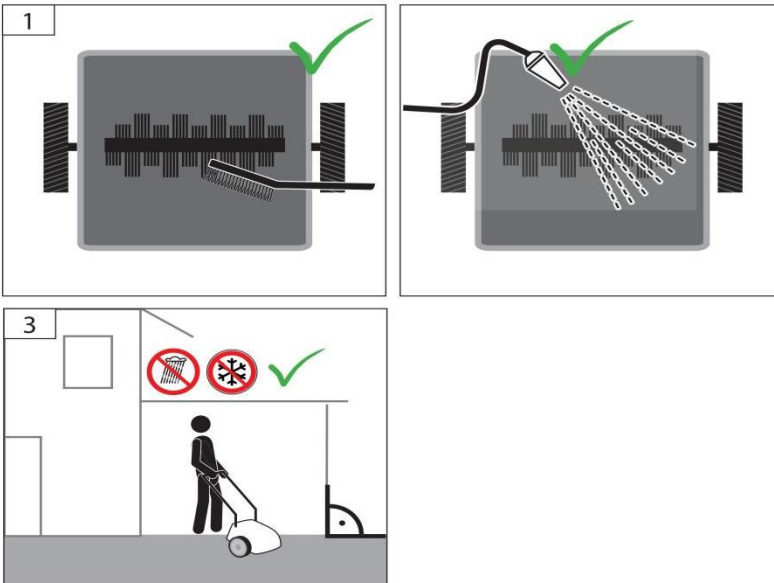
Do not use chemicals, including gasoline or solvents, for cleaning. Some of them can destroy important plastic parts.

Use a damp cloth to clean the plastic parts.

Remove dust and dirt from the product after each use.

If the brushes are not rotating reliably, the bearing of the brushes may be dirty.

Clean and lubricate the bearing of the brushes.



## Storage

For any longer storage, the product must be thoroughly cleaned and stored so that unauthorized persons can- not access it.

- Empty the collection bag.
- Use the height adjustment to relieve the brushes.
- Store the product where it is dry.

## Guarantee

The warranty period of 12 months applies to commercial use and 24 months applies to private use and commences on the day of purchase of the device.

The guarantee does not cover any unauthorized use, such as appliance overloading, use of violence, or damage as a result of any unauthorized interference caused by foreign items. Failing to follow the operating and assembly instructions and common wear are also not included in the guarantee.

EU Importer: SHUNSHUN GmbH  
Römeräcker 9 Z2021,76351 Linkenheim-Hochstetten, Germany



**SHUNSHUN GmbH**  
**Römeräcker 9 Z2021,76351**  
**Linkenheim-Hochstetten, Germany**

Made In China

**VEVOR<sup>®</sup>**

**TOUGH TOOLS, HALF PRICE**

**Technical Support and E-Warranty Certificate**

**[www.vevor.com/support](http://www.vevor.com/support)**